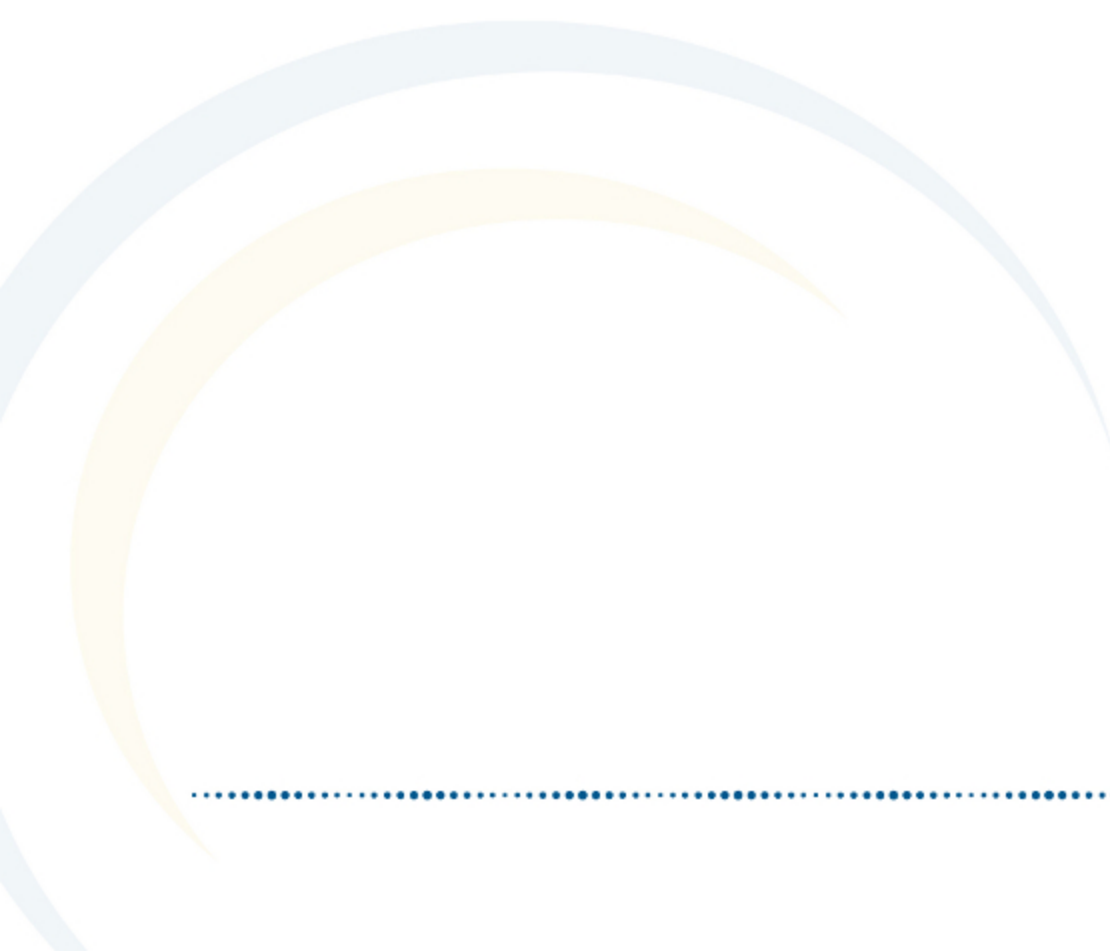


Student Filter Fields for Ad hoc Reporting

December 2011



This document is intended for restricted use only.

Infinite Campus asserts that this document contains proprietary information that would give our competitors undue advantage should they come into possession of any part or all of it. As such, this document cannot be publicly disclosed unless so ordered by a court of competent jurisdiction.

©2010 Infinite Campus, Inc. All rights reserved.

INFINITE CAMPUS and Transforming K12 Education are registered trademarks of Infinite Campus, Inc. The INFINITE CAMPUS logo is a trademark of Infinite Campus, Inc. This publication, or any part thereof, may not be reproduced or transmitted in any form or any means, electronic or mechanical, including photocopying, recording, storage in an information retrieval system, or otherwise, by anyone other than Infinite Campus, Inc. without written permission of Infinite Campus, Inc., 4321 109th Avenue NE, Blaine, MN 55449, tel. (651) 631-0000, email info@infinitecampus.com.

Student Filter Fields for Ad hoc Reporting

[Overview](#) | [Student Filter Fields](#) | [Student > Demographics](#) | [Student > School Calendar](#) | [Student > School](#) | [Student > District](#) | [Student > Learner > Active Enrollment](#) | [Student > Learner > Graduation Elements](#) | [Student > Learner > All Enrollments](#) | [Student > Learner > Enrollment History](#) | [Student > Learner > LEP](#) | [Student > Learner > Membership Day Counts](#) | [Student > Learner > Membership/Attendance Detail](#) | [Student > Learner > Programs](#) | [Student > Learner > Waiver](#) | [Student > Learner > Schedule](#) | [Student > Counselor](#) | [Student > Learner Planning](#) | [Student > Census](#) | [Student > Health](#) | [Student > Medicaid](#) | [Student > Behavior](#) | [Student > Attendance](#) | [Student > Assessment](#) | [Student > Grading](#) | [Student > Learner Portfolio](#) | [Student > Locker](#) | [Student > Fee](#) | [Student > Transportation](#) | [Student > Activities](#) | [Student > Campus Usage](#) | [Student > Food Service](#)

Overview

PATH: *Ad hoc Reporting > Filter Designer*

PATH: *Ad hoc Reporting > Report Designer*

The Ad hoc Reporting tools allow users to create custom queries and reports on various types of information stored within the Campus database. Reports may be used for data analysis and state reporting and queries may be exported out of Campus or used to create filters for standard reports. Custom filters and reports are built by adding elements from Ad hoc Reporting tools like the [Filter Designer](#) and the [Report Designer](#). The following is a list of available fields that can be included in Ad hoc reports that draw from student data.

The name of an Ad hoc element is not necessarily the name listed in the user interface; therefore, the following tables briefly define and map Ad hoc elements to the appropriate interface locations/fields.

These fields appear in Ad hoc Reporting > Filter Designer, but many can be used in the [Report Designer](#).

- ✔ This article details the fields available for building Student filters. For other available fields, see the [Census/Staff](#) and [Course/Section](#) articles.

Student Filter Fields

The following fields are available for creating queries with the Filter Data Type of Student.

- ✔ See the [Query Wizard](#) article for instructions on managing these filter.

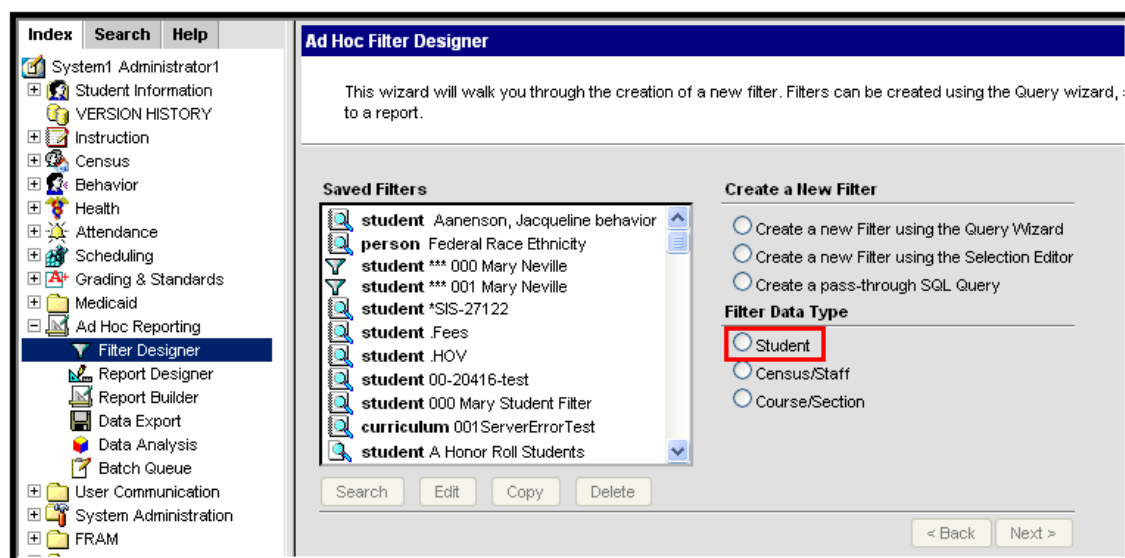


Image 1: Filter Data Type - Student

Student > Demographics

Filter Field	Mapping and Definition
personID	<i>Census > People > Demographics</i> Internal database identifier
stateID	<i>Census > People > Demographics</i> Unique identifier issued to a student by the state department of education for state reporting purposes
otherID	<i>Census > People > Demographics</i> Additional identifier for student, used in multi-state implementations
studentNumber	<i>Census > People > Demographics</i> The unique numerical identifier assigned to a student enrolled in a school that can be formatted to district preferences and is used in state reporting
personGUID	<i>Census > People > Demographics</i> Internal database identifier.
identityID	Internal database identifier
effectiveDate	<i>Census > People > Demographics</i> Date identity became active
lastName	<i>Census > People > Demographics</i> Last name of identity
firstName	<i>Census > People > Demographics</i> First name of identity

middleName	<i>Census > People > Demographics</i> Middle Name of identity
suffix	<i>Census > People > Demographics</i> Indication of Jr., Sr., III, IV, etc
alias	<i>Census > People > Demographics</i> Nickname used instead of given name
gender	<i>Census > People > Demographics</i> Male or female
birthdate	<i>Census > People > Demographics</i> Birth date of person
ssn	<i>Census > People > Demographics</i> Social security number of individual
raceEthnicity	<i>Census > People > Demographics</i> Race/ethnicity of person
hispanicEthnicity	<i>Census > People > Demographics</i> If flagged, checkbox indicates person is considered to be of Hispanic/Latino ethnicity
raceEthnicityFed	<i>Census > People > Demographics</i> Federal race/ethnicity code. May be different than the raceEthnicity selection.
raceEthnicityDetermination	<i>Census > People > Demographics</i> Selection of how the individual was determined to be the selected race/ethnicity.
birthCountry	<i>Census > People > Demographics</i> Selection of country of birth, if no US
birthCity	<i>Census > People > Demographics</i> Indicates the city the student was born in
enrollmentID	Internal database identifier
grade	<i>Student Information > General > Enrollments</i> Notes the grade level of the student
serviceType	<i>Student Information > General > Enrollments</i> Lists the assigned type of enrollment. Options include Primary, Special Education and Partial
startDate	<i>Student Information > General > Enrollments</i> Notes the start date of enrollment at the school, defined as the first day student began receiving instruction

startStatus	<i>Student Information > General > Enrollments</i> Lists the enrollment start code for the student. Codes are often state-specific and are used in several state reporting extracts
endDate	<i>Student Information > General > Enrollments</i> Notes the end date of enrollment at the school. This must be the last day the student received instruction
endStatus	<i>Student Information > General > Enrollments</i> Lists the enrollment end code for the student. These codes are often state-specific and are used in several state reporting extracts
calendarID	Internal database identifier
structureID	Internal database identifier
schoolID	Internal database identifier
districtID	Internal database identifier
calendarName	<i>System Administration > Calendar > Calendar</i> User-entered name of the calendar name associated with this historical enrollment
calendarStart	<i>System Administration > Calendar > Calendar</i> Lists the date when the calendar is first used. This is NOT the first day of instruction, but could be the first day the staff is available
calendarEnd	<i>System Administration > Calendar > Calendar</i> Lists the date when the calendar is last used. This is NOT the last day of instruction, but could be the last day the staff is available
startYear	<i>System Administration > Calendar > Calendar</i> The 4-digit year marking the start of the school year (i.e. 2005 would be the start of the 05-06 school year)
endYear	<i>System Administration > Calendar > Calendar</i> The 4-digit year marking the end of the school year (i.e. 2006 would be the end of the 05-06 school year)
label	<i>System Administration > Calendar > Calendar</i> The name used to represent the school year (i.e. 05-06, 2005-2006, etc.)
activeYear	<i>System Administration > Calendar > School Years</i> Flag to indicate that this is the current active school year. This controls things like default information in the parent portal, etc

activeToday	<p>Internal indication that calendar is currently active.</p> <p>activeToday means the student must be active on the current date. Operator rules such as = , <=, etc., do not work for this data element.</p> <p>This field uses the following logic:</p> <ul style="list-style-type: none"> • If the student is active on the date the report was generated, will display as 1: active. • Considers the Start Date greater than or equal to (>=) the current date and will display as 1. • Considers the End Date of less than or equal to(<=) the current date and will display as 1.
teamName	<p><i>Displays in Student Information Header</i></p> <p>Scheduling team to which student is assigned.</p>
age	<p><i>Displays in Student Information Header</i></p> <p>Calculation of age based on birth date and current date.</p>
he_she	<p><i>Reporting element only</i></p> <p>Pronouns available for personalizing form letters.</p>
He_She_capital	<p><i>Reporting element only</i></p> <p>Pronouns available for personalizing form letters.</p>
his_her	<p><i>Reporting element only</i></p> <p>Pronouns available for personalizing form letters.</p>
His_Her_capital	<p><i>Reporting element only</i></p> <p>Pronouns available for personalizing form letters.</p>
stateGrade	<p><i>System Administration > Calendar > Grade Levels > State Grade level Code</i></p> <p>State grade level mapped to the local grade level.</p>
gradeLevelExcludeState	<p><i>System Administration > Calendar > Grade Levels > State Grade level Code</i></p> <p>Indicates students within state excluded grade levels.</p>
homeroomTeacher	<p>Reporting element only</p> <p>Student's assigned homeroom teacher, as designated by Homeroom checkbox of Course > Section. Not used in all states.</p>
Federal Race	<i>Student > Demographics > Federal Race</i>
personID	Internal database identifier.
identityID	Internal database identifier.
raceEthnicity	<p><i>Census > People > Demographics</i></p> <p>Individuals state race/ethnicity</p>

hispanicEthnicity	<i>Census > People > Demographics</i> Indicates individual's Hispanic ethnicity.
raceEthnicityFed	<i>Census > People > Demographics</i> Individual's federal race/ethnicity designation
raceEthnicityDetermination	<i>Census > People > Demographics</i> How the individual's race was determined.
hispanicLatino	<i>Census > People > Demographics</i> Indicates if individual is Hispanic/Latino.
americanIndian	<i>Census > People > Demographics</i> Indicates if individual is American Indian or Alaska Native.
asian	<i>Census > People > Demographics</i> Indicates if individual is Asian.
blackOrAfricanAmerican	<i>Census > People > Demographics</i> Indicates if individual is Black or African American.
pacificIslander	<i>Census > People > Demographics</i> Indicates if individual is Native Hawaiian or Other Pacific Islander.
white	<i>Census > People > Demographics</i> Indicates if individual is White.
multiracial	<i>Census > People > Demographics</i> Indicates that person has more than one race selected.
<i>Identity History</i>	<i>Student > Demographics > Identity History</i>
identityID	Internal database identifier.
personID	Internal database identifier.
effectiveDate	<i>Census > People > Identities</i> Date identity became active.
lastName	<i>Census > People > Identities</i> Last name of identity.
firstName	<i>Census > People > Identities</i> First name of identity.
middleName	<i>Census > People > Identities</i> Middle name of identity.
suffix	<i>Census > People > Identities</i> Indication of Jr., Sr., III, IV, etc.
alias	<i>Census > People > Identities</i> Nickname used instead of given name.

gender	<i>Census > People > Identities</i> Male or female.
birthdate	<i>Census > People > Identities</i> Birth date of person.
ssn	<i>Census > People > Identities</i> Social security number of individual.
raceEthnicity	<i>Census > People > Identities</i> Race/ethnicity of person.
birthCountry	<i>Census > People > Identities</i> Selection of country of birth, if not U.S.
dateEnteredUS	<i>Census > People > Identities</i> Date person entered U.S.
birthVerification	<i>Census > People > Identities</i> Birth Verification certificate type (e.g. birth certificate, immigration document, physician's certificate). Not used in all states.
comments	<i>Census > People > Identities</i> Additional information associated with identity of person.
districtID	Internal database identifier.
hispanicEthnicity	<i>Census > People > Identities</i> If flagged, checkbox indicates person is considered to be of Hispanic/Latino ethnicity. Not used in all states.
identityGUID	Internal database identifier.
lastNamePhonetic	Used in sound-alike searches.
firstNamePhonetic	Used in sound-alike searches.
dateEnteredState	<i>Census > People > Identities</i> Date student originally entered state.
birthCertificate	<i>Census > People > Identities</i> Type of document used to verify existence of person.
immigrant	<i>Student Information > General > Enrollments</i> Indicates the student being of immigrant status.
dateEnteredUSSchool	<i>Census > People > Identities</i> Date student entered a U.S. school for the first time.
raceEthnicityFed	<i>Student Information > Demographics</i> Federal race/ethnicity code. May be different than the raceEthnicity selection.

raceEthnicityDetermination	<i>Student Information > Demographics</i> Selection of how the individual was determined to be the selected race/ethnicity.
birthVerificationBIE	<i>Census > People > Demographics</i> How the individual's birth was verified.
modifiedByID	<i>Does not appear.</i> Lists the person who modified the information.
modifiedDate	<i>Does not appear.</i> Date of last change.
refugee	<i>Student Information > General > Enrollments > State Reporting Fields</i> If flagged, checkbox indicates individual is a refugee.
homePrimaryLanguage	<i>Census > People > Demographics</i> The primary language spoken in the individual's home.
Impact Aid Employment	<i>Student > Demographics > Impact Aid Employment</i>
personID	Internal database identifier.
siteID	Internal database identifier.
employeeType	<i>Census > People > Demographics > Person Impact Aid Employment</i> Type of impact aid employment in which individual is participating.

Student > School Calendar

Filter Field	Mapping and Definition
calendarID	Internal database identifier.
districtID	Internal database identifier.
schoolID	Internal database identifier.
endYear	<i>System Administration > Calendar > School Years</i> Refers to the last year of a school year. For example, calendars for 2007-08 have the end year 2008.
name	<i>System Administration > Calendar > Calendar</i> Displays the name of the calendar.
number	<i>System Administration > Calendar > Calendar</i> Displays the number of the calendar for reference purposes.
startDate	<i>System Administration > Calendar > Calendar</i> Lists the date when the calendar is first used. This is NOT the first day of instruction, but could be the first day staff is available.

endDate	<i>System Administration > Calendar > Calendar</i> Lists the date when the calendar is last used. This is NOT the last day of instruction, but could be the last day staff are available.
comments	<i>System Administration > Calendar > Calendar</i> Notes any comments associated with the calendar.
exclude	<i>System Administration > Calendar > Calendar</i> When this checkbox is marked, the calendar is not used in state reporting extracts.
summerSchool	<i>System Administration > Calendar > Calendar</i> When this checkbox is marked, the calendar is labeled as a summer school calendar.
studentDay	<i>System Administration > Calendar > Calendar</i> Lists the total number of minutes students are scheduled into courses.
teacherDay	<i>System Administration > Calendar > Calendar</i> Lists the total number of minutes teachers are available for instruction and prep time.
wholeDayAbsence	<i>System Administration > Calendar > Calendar</i> Lists the total number of minutes that constitutes a full day of absence per a district or state decision. Used in calculating ADM and ADA.
halfDayAbsence	<i>System Administration > Calendar > Calendar</i> Lists the total number of minutes that constitutes a half day of absence per a district or state decision. Used in calculating ADM and ADA.
calendarGUID	Internal database identifier.
alternativeCode	<i>System Administration > Calendar > Calendar</i> If flagged, checkbox indicates a 4 Day School Week. Not used in all states.
title3	<i>System Administration > Calendar > Calendar</i> Indicates district participates in the Title 3 program. Not used in all states.
title3consortium	<i>System Administration > Calendar > Calendar</i> Indicates the school is part of a team of districts operating together to improve student learning using Title 3 funds. Not used in all states.
title1	<i>System Administration > Resources > School</i> Displays the selection of the Title 1 funding options. Not used in all states.
legacyKey	Used during data conversion.
schoolChoice	<i>System Administration > Calendar > Calendar</i> If flagged, checkbox indicates calendar is labeled as using school choice functionality.
type	<i>System Administration > Calendar > Calendar</i> Calendar type is usually (I)nstructional, but can also be (S)ummer School, (R)esidential, etc.


countDate	<i>System Administration > Calendar > Calendar</i> Testing Count Date. Not used in all states.
assignmentRequired	<i>System Administration > Calendar > Calendar</i> Defines if students enrolling in this calendar are required to follow school boundary assignment logic.
<i>Calendar Assignment Overrides</i>	<i>Student > School Calendar > Calendar Assignment Overrides</i>
calendarOverridID	Internal database identifier.
calendarID	Internal database identifier.
overrideType	<i>System Administration > Calendar > Calendar > Overrides</i> Displays selection of type of override used in school placement.

Student > School

Filter Field	Mapping and Definition
schoolID	Internal database identifier.
districtID	Internal database identifier.
ncesSchoolID	<i>System Administration > Resources School</i> NCES school number.
number	<i>System Administration > Resources > School</i> School location number.
name	<i>System Administration > Resources > School</i> School location number.
type	<i>System Administration > Resources > School</i> Designated type of school (e.g. Elementary, Middle, High, etc.).
comments	<i>System Administration > Resources > School</i> User-entered notes about the school.
address	<i>System Administration > Resources > School</i> Mailing address of school building.
city	<i>System Administration > Resources > School</i> Mailing city of school building.
state	<i>System Administration > Resources > School</i> State of school building.
zip	<i>System Administration > Resources > School</i> Zip code of school building.

phone	<i>System Administration > Resources > School</i> Phone number of school building.
fax	<i>System Administration > Resources > School</i> Fax number of school building.
email	<i>System Administration > Resources > School</i> Email of school building.
url	<i>System Administration > Resources > School</i> Web site address of school.
dualEnrollment	<i>System Administration > Resources > School</i> Checked if school allows students to be enrolled in two buildings at one time.
title1	<i>System Administration > Resources > School</i> Displays the selection of the Title 1 funding options.
principalName	<i>System Administration > Resources > School</i> Name of principal.
principalTitle	<i>System Administration > Resources > School</i> Name of principal's title.
principalEmail	<i>System Administration > Resources > School</i> Email of principal.
schoolGUID	Internal database identifier.
catalogID	Internal database identifier.
satNumber	<i>System Administration > Resources > School</i> School number for SAT purposes; varies by state (e.g. CEEB, CBBC).
standardCode	<i>System Administration > Resources > School</i> Code related to SIF/DIS information.
agency	<i>System Administration > Resources > School</i> Agency (Education Line Office) associated with school. Not used in all states.
restructureStartDate	<i>System Administration > Resources > School > School</i> For BIE schools, the date on which restructuring to meet NCLB standards began.
restructureEndDate	<i>System Administration > Resources > School > School</i> For BIE schools, the date on which restructuring to meet NCLB standards ended.
groupNumber	District number assigned by and only used in the federal installation to allow tracking of both the state-assigned district number and the federal assigned number.
aypGrouping	<i>System Administration > Resources > School</i> AYP Grouping of school (e.g. K-8, 9-12, exclude). Not used in all states.

reportingSchoolID	Internal database identifier.
physicalAddress	<i>System Administration > Resources > School</i> Physical address of school building.
physicalCity	<i>System Administration > Resources > School</i> Physical city of school building.
physicalState	<i>System Administration > Resources > School</i> Physical state of school building.
physicalZip	<i>System Administration > Resources > School</i> Physical zip code of school building.
county	<i>System Administration > Resources > School</i> County of school. Not used in all states.
status	<i>System Administration > Resources > School</i> Operational Status of school. Not used in all states.
accreditation	<i>System Administration > Resources > School</i> Accreditation Status of school. Not used in all states.
gradeType	<i>System Administration > Resources > School</i> Grade Type associated with school. Not used in all states.
sector	<i>System Administration > Resources > School</i> Sector of education school is related to (e.g. public, non-public). Not used in all states.
locale	<i>System Administration > Resources > School</i> Locale Code indicating school size and location. Not used in all states.
locale2	<i>System Administration > Resources > School</i> Locale Code indicating school size and location. Not used in all states.
blueRibbon	<i>System Administration > Resources > School</i> If flagged, checkbox indicates school is considered a Blue Ribbon School. Not used in all states.
title1Distinguished	<i>System Administration > Resources > School</i> If flagged, checkbox indicates school is considered a Title 1 Distinguished School. Not used in all states.
entityID	<i>System Administration > Resources > School</i> Indicator of school's AYP School Status. Not used in all states.
aypStatus	<i>System Administration > Resources > School</i> Indicator of school's AYP School Status. Not used in all states.
size	<i>System Administration > Resources > School</i> The school's MHSA Designation. Not used in all states.

sessionType	<i>Not applicable to interface</i> SIF element.
modifiedByID	<i>Does not appear.</i> Lists the person who modified the information.
modifiedByDate	<i>Does not appear.</i> The date on which the information was modified.
operationalStatus	<i>System Administration > Resources > School</i> The Operational Status of the school. <div style="background-color: #e6f2ff; padding: 10px; margin-top: 10px;">  This field was added as of the E.1146 Release Pack </div>

Student > District

Filter Field	Mapping and Definition
districtID	Internal database identifier.
ncesDistrictID	<i>System Administration > Resources > District Information</i> NCES District internal database identifier.
number	<i>System Administration > Resources > District Information</i> State-assigned district number.
name	<i>System Administration > Resources > District Information</i> State-recognized district name.
type	<i>System Administration > Resources > District Information</i> State-defined district type used by some states for state reporting.
state	<i>System Administration > Resources > District Information</i> State in which the district exists.
comments	<i>System Administration > Resources > District Information</i> User-entered additional information.
address	<i>System Administration > Resources > District Information</i> Mailing address of the district office.
city	<i>System Administration > Resources > District Information</i> Mailing city of the district office.
zip	<i>System Administration > Resources > District Information</i> Mailing zipcode (zip+4 available) of the district office.

county	<i>System Administration > Resources > District Information</i> Mailing county of the district office.
phone	<i>System Administration > Resources > District Information</i> General information phone number for the district office.
fax	<i>System Administration > Resources > District Information</i> General fax number for the district office.
email	<i>System Administration > Resources > District Information</i> General information email for the district office.
districtGUID	Internal database identifier.
stateLinked	System indicator to determine whether district is linked with a state or regional installation of Campus.
url	<i>System Administration > Resources > District Information</i> General URL for the district.
contactLastName	<i>System Administration > Resources > District Information</i> Primary contact last name for the district.
contactFirstName	<i>System Administration > Resources > District Information</i> Primary contact first name for the district.
inactive	System indicator to determine if the district is currently active.
spedFax	<i>System Administration > Resources > District Information</i> District Special Ed office fax number.
spedPhone	<i>System Administration > Resources > District Information</i> District Special Ed office phone number.
spedContactFirstName	<i>System Administration > Resources > District Information</i> District Special Ed contact first name.
spedContactLastName	<i>System Administration > Resources > District Information</i> District Special Ed contact last name.
regionNumber	<i>System Administration > Resources > District Information</i> The state-defined region that logically or physically groups districts together for reporting purposes.
legacyKey	Used during data conversion.
spedAddress	<i>System Administration > Resources > District Information</i> District Special Ed mailing address.
spedCity	<i>System Administration > Resources > District Information</i> District Special Ed mailing city.


spedState	<i>System Administration > Resources > District Information</i> District Special Ed mailing state.
spedZip	<i>System Administration > Resources > District Information</i> District Special Ed mailing zip code (zip+4 available).
spedCounty	<i>System Administration > Resources > District Information</i> District Special Ed mailing county.
groupNumber	District number assigned by and only used in the federal installation to allow tracking of both the state-assigned district number and the federal assigned number.
federalTaxID	<i>System Administration > Resources > District Information</i> Federal ID for Medicaid billing.
nationalProviderID	<i>System Administration > Resources > District Information</i> National Provider ID for Medicaid billing.
mchpProviderID	<i>System Administration > Resources > District Information</i> MHCP Provider ID for Medicaid billing.
districtCode	<i>System Administration > Resources > District Information</i> District Code indicating district type (e.g. Public Schools, Correctional Facilities, Alternative). Not used in all states.
physicalAddress	<i>System Administration > Resources > District Information</i> Physical address of district.
physicalCity	<i>System Administration > Resources > District Information</i> Physical city of district.
physicalState	<i>System Administration > Resources > District Information</i> Physical state of district.
physicalZip	<i>System Administration > Resources > District Information</i> Physical zip code of district.
status	<i>System Administration > Resources > School</i> Operational Status of school. Not used in all states.
ISDNumber	<i>System Administration > Resources > District Information</i> Independent school district number.

Student > Learner > Active Enrollment



Elements available in the following Active Enrollment area are also available in the Enrollment History area. Selecting a field from an Active Enrollment will return from the student's currently active enrollments, while selecting a field from the Enrollment History area will return data from the student's enrollment history.

Filter Field	Mapping and Definition
<i>Core Elements</i>	<i>Student > Learner > Active Enrollment > Core Elements</i>
enrollmentID	Internal database identifier.
personID	Internal database identifier.
calendarID	Internal database identifier.
structureID	Internal database identifier.
grade	<i>Student Information > General > Enrollments</i> Notes the grade level of the student.
serviceType	<i>Student Information > General > Enrollments</i> Lists the assigned type of enrollment. Options include Primary, Special Education and Partial.
active	Internal reference to the student being an actively enrolled student.
classRankExclude	<i>Student Information > General > Enrollments</i> If flagged, student will not be included in class rank determination.
startDate	<i>Student Information > General > Enrollments</i> Notes the Start Date of enrollment at the school. This must be the first day the student began receiving instruction.
startStatus	<i>Student Information > General > Enrollments</i> Lists the enrollment start code for the student.
startComments	<i>Student Information > General > Enrollments</i> Lists any comments associated with the start of enrollment.
endDate	<i>Student Information > General > Enrollments</i> Notes the end date of enrollment at the school. This must be the last day the student stopped receiving instruction.
endStatus	<i>Student Information > General > Enrollments</i> Lists the enrollment end code for the student.
endComments	<i>Student Information > General > Enrollments</i> Lists user-entered comments associated with the end of enrollment.
endAction	<i>Student Information > General > Enrollments</i> Used in processing enrollments for the next school year. Options are Promote, Demote and Retain.
nextCalendar	<i>Student Information > General > Enrollments</i> Notes into which calendar the student will be enrolled in the upcoming school year.
nextGrade	<i>Student Information > General > Enrollments</i> Notes into which grade level the student will be enrolled in the upcoming school year.

servingDistrict	<i>Student Information > General > Enrollments</i> District of accountability that serves the student for programming and instruction.
enrollmentGUID	Internal database identifier.
withdrawDate	<i>Student Information > General > Enrollments</i> The date on which the student withdrew from enrollment. Not used in all states.
nextStructureID	Internal database identifier.
Grade Level Elements	<i>Student > Learner > Active Enrollment > Core Elements > Grade Level Elements</i>
excludeState	<i>System Administration > Calendar > Calendar > Grade Levels > Exclude from State Reporting</i> Indicates enrollment records in state-excluded grade levels.
stateGrade	<i>System Administration > Calendar > Calendar > Grade Levels > State Grade Level Code</i> Indicates the State Grade Level Code of the enrollment record's grade level.
State Reporting Elements	<i>Student > Learner > Active Enrollment > State Reporting Elements</i>
stateExclude	<i>Student Information > General > Enrollments</i> When marked, the student will not appear on any state reporting extracts.
residentDistrict	<i>Student Information > General > Enrollments</i> Notes in which district the student lives.
mealStatus	<i>Student Information > General > Enrollments</i> Indicates the economic eligibility of the student.
englishProficiency	<i>Student Information > General > LEP</i> Indicates the student becoming proficient in English. <div>  This field may no longer be used in your state. See the LEP tab page for more information </div>
language	<i>Student Information > General > Enrollments</i> Notes the language most often spoken at home by the student and family.
transportation	<i>Student Information > General > Transportation</i> A code indicating the type of transportation the student receives.
migrant	<i>Student Information > General > Enrollments</i> Dropdown list indicates whether or not student is considered a migrant.
immigrant	<i>Student Information > General > Enrollments</i> Indicates the student being of immigrant status.

homeless	<i>Student Information > General > Enrollments</i> Indicates the student being of homeless status.
homebound	<i>Student Information > General > Enrollments</i> Indicates the student is homebound.
giftedTalented	<i>Student Information > General > Enrollments</i> Indicates whether the student is Gifted/Talented. Not used in all states.
percentEnrolled	<i>Student Information > General > Enrollments</i> Indicates the amount of time the student is enrolled.
section504	<i>Student Information > General > Enrollments</i> Indicates the student is receiving and participating in Section 504 Programming.
dropoutCode	<i>Student Information > General > Enrollments</i> Selected when the student ends enrollment not due to moving away.
Special Ed Elements	<i>Student > Learner > Active Enrollment > Special Ed Elements</i>
specialEdStatus	<i>Student Information > General > Enrollments</i> Indicates the type of special education status of the student. Students may have more than one status.
specialEdSetting	<i>Student Information > General > Enrollments</i> Notes the specific setting of the special education student.
disability1	<i>Student Information > General > Enrollments</i> Primary disability of Student. Options are based on state designations.
disability2	<i>Student Information > General > Enrollments</i> If student has an additional disability.
spedExitDate	<i>Student Information > General > Enrollments</i> Date the student was exited from special education programming.
spedExitReason	<i>Student Information > General > Enrollments</i> Exit status reason for leaving special education programming.
Custom Enrollment	<i>Student > Learner > Active Enrollment > Custom Enrollment</i> Custom Enrollment fields are locally customized fields created and used by a district for internal purposes.

Student > Learner > Graduation Elements

Filter Field	Mapping and Definition
grade9Date	<i>Student Information > General > Graduation</i> Indicates the date student first started ninth grade.

cohortYearNGA	<i>Student Information > General > Graduation</i> Four years after the year in grade9Date.
cohortYearNCLB	<i>Student Information > General > Graduation</i> Four years after the year in grade9Date.
diplomaDate	<i>Student Information > General > Graduation</i> Lists the date the student received a diploma.
diplomaType	<i>Student Information > General > Graduation</i> Describes the type of diploma the student received.
diplomaPeriod	<i>Student Information > General > Graduation</i> Indicates the time of year the student received the diploma.
postGradPlans	<i>Student Information > General > Graduation</i> The student's Post Grad Plan. Not used in all states.
postGradLocation	<i>Student Information > General > Graduation</i> The student's Post Grad Intended Location. Not used in all states.
gradYear	<i>Student Information > General > Graduation</i> Year of graduation. Not used in all states.

Student > Learner > All Enrollments

Filter Field
<i>Core Elements</i>
See the Student > Learner > Active Enrollment table for the descriptions and paths of these fields.
<i>State Reporting Elements</i>
Elements in this section vary by state.
<i>Special Ed Elements</i>
Elements in this section vary by state.
<i>Custom Enrollment</i>
Custom Enrollment fields are locally customized fields created and used by a district for internal purposes.
<i>School Calendar</i>
See the Student > School Calendar table for the descriptions and paths of these fields.
<i>School</i>
See the Student > School table for the descriptions and paths of these fields.


Student > Learner > Enrollment History

For a list, mapping and definition of these elements, please refer to the [Student > Learner > Active Enrollment](#) section. Selecting a field from the Student > Learner > Active Enrollment area will return data from the student's current, active enrollment, while selecting a field from the Student > Learner > Enrollment History area will return data from the student's enrollment history. The Enrollment History area also contains the following, additional fields (not found in the Active Enrollment section).

Filter Field	Mapping and Definition
<i>Core Elements</i>	<i>Student > Learner > Enrollment History > Core Elements</i>
enrollmentID	Internal database identifier.
personID	Internal database identifier.
calendarID	Internal database identifier.
structureID	Internal database identifier.
grade	<i>Student Information > General > Enrollments</i> Notes the grade level of the student.
serviceType	<i>Student Information > General > Enrollments</i> Lists the assigned type of enrollment. Options include Primary, Special Education and Partial.
active	Internal reference to the student being an actively enrolled student.
classRankExclude	<i>Student Information > General > Enrollments</i> If flagged, student will not be included in class rank determination.
startDate	<i>Student Information > General > Enrollments</i> Notes the Start Date of enrollment at the school. This must be the first date the student began receiving instruction.
startStatus	<i>Student Information > General > Enrollments</i> Lists the enrollment start code for the student.
startComments	<i>Student Information > General > Enrollments</i> Lists any comments associated with the start of enrollment.
endDate	<i>Student Information > General > Enrollments</i> Notes the end date of enrollment at the school. This must be the last day the student stopped receiving instruction.
endStatus	<i>Student Information > General > Enrollments</i> Lists the enrollment end code for the student.
endComments	<i>Student Information > General > Enrollments</i> Lists user-entered comments associated with the end of enrollment.

endAction	<i>Student Information > General > Enrollments</i> Used in processing enrollments for the next school year. Options are Promote, Demote and Retain.
nextCalendar	<i>Student Information > General > Enrollments</i> Notes into which calendar the student will be enrolled in the upcoming school year.
nextGrade	<i>Student Information > General > Enrollments</i> Notes into which grade level the student will be enrolled in the upcoming school year.
servingDistrict	<i>Student Information > General > Enrollments</i> District of accountability that serves the student for programming and instruction.
enrollmentGUID	Internal database identifier.
withdrawDate	<i>Student Information > General > Enrollments_</i> The date on which the student withdrew from enrollment. Not used in all states.
nextStructureID	Internal database identifier.

Student > Learner > LEP

 LEP fields are made available on a state-by-state basis. See the [LEP tab](#) page for more information.

Filter Field	Mapping and Definition
currentProgramStatus	<i>Student Information > Program Participation > LEP > Program Status</i> <i>Student Information > General > LEP > Program Status (For SD users on Release Pack E.1134)</i> The student's LEP Program Status as of the current date. Reporting logic may differ between states. See the LEP tab page for more information.
lepID	Internal Identifier
districtID	<i>System Administration > Resources > District Information > NCES District ID</i> The districtID of the district tied to the student's LEP record.
personID	<i>Census > People > Demographics > PersonID</i> The personID of the student reporting LEP data.
lepGUID	Internal Identifier
programStatus	<i>Student Information > Program Participation > LEP > Program Status</i> <i>Student Information > General > LEP > Program Status (For SD users on Release Pack E.1134)</i> The student's LEP Program status. Reporting logic may differ between states. See the LEP tab page for more information.

identifiedDate	<p><i>Student Information > Program Participation > LEP > Identified Date</i> <i>Student Information > General > LEP > Identified Date (For SD users on Release Pack E.1134)</i></p> <p>The date the student was identified as eligible for an LEP program or services. This date should reflect the date the student took the Screener/Initial Determination Test and is used to determine if the student is participating in an LEP program.</p>
expectedExitDate	<p><i>Student Information > Program Participation > LEP > Expected Exit Date</i> <i>Student Information > General > LEP > Expected Exit Date (For SD users on Release Pack E.1134)</i></p> <p>The date the student is expected to exit the LEP program.</p>
exitDate	<p><i>Student Information > Program Participation > LEP > Program Exit Date</i> <i>Student Information > General > LEP > Program Exit Date (For SD users on Release Pack E.1134)</i></p> <p>The date the student exited the LEP program. Federal reporting continues to track LEP data for two years beyond this date. This information is reflected in the First Year Monitoring and Second Year Monitoring fields.</p>
firstYearMonitoring	<p><i>Student Information > Program Participation > LEP > First Year Monitoring</i> <i>Student Information > General > LEP > First Year Monitoring (For SD users on Release Pack E.1134)</i></p> <p>Calculated as exactly one year from the student's Program Exit Date. This date is used by Federal reports for tracking and reporting purposes.</p>
secondYearMonitoring	<p><i>Student Information > Program Participation > LEP > Second Year Monitoring</i> <i>Student Information > General > LEP > Second Year Monitoring (For SD users on Release Pack E.1134)</i></p> <p>Calculated as exactly two years from the student's Program Exit Date. This date is used by Federal reports for tracking and reporting purposes.</p>
parentNotifiedDate	<p><i>Student Information > Program Participation > LEP > Parent Notified</i> <i>Student Information > General > LEP > Parent Notified (For SD users on Release Pack E.1134)</i></p> <p>The date the student's parent(s) were notified about the student being eligible for LEP services.</p>
parentDeclined	<p><i>Student Information > Program Participation > LEP > Parent Declined</i> <i>Student Information > General > LEP > Parent Declined (For SD users on Release Pack E.1134)</i></p> <p>Indicates whether or not the student's parent(s) declined LEP services.</p>
comments	<p><i>Student Information > Program Participation > LEP > Comments</i> <i>Student Information > General > LEP > Comments (For SD users on Release Pack E.1134)</i></p> <p>Comments related to the student's LEP record.</p>
modifiedByID	<p><i>Student Information > Program Participation > LEP</i> <i>Student Information > General > LEP (For SD users on Release Pack E.1134)</i></p> <p>Indicates the last person to modified the student's LEP record.</p>

modifiedDate	<i>Student Information > Program Participation > LEP</i> <i>Student Information > General > LEP (For SD users on Release Pack E.1134)</i> Indicates the date of the most recent modification made to the student's LEP record (this should correlate to the modifiedByID).
---------------------	--

Student > Learner > Membership Day Counts

Filter Field	Mapping and Definition
endYear	<i>System Administration > Calendar > School Years</i> Refers to the last year of a school year (e.g. 2008 of school year 2007-08).
districID	Internal database identifier.
personID	Internal database identifier.
calendarID	Internal database identifier.
structureID	Internal database identifier.
totalMembersipDays	Count of instructional days student was enrolled.
term1Membership	Count of instructional days student was enrolled for Term 1.
term2Membership	Count of instructional days student was enrolled for Term 2.
term3Membership	Count of instructional days student was enrolled for Term 3.
term4Membership	Count of instructional days student was enrolled for Term 4.

Student > Learner > Membership/Attendance Detail

Filter Field	Mapping and Definition
endYear	<i>System Administration > Calendar > School Years</i> Refers to the last year of a school year (e.g. 2008 of school year 2007-08).
districtID	Internal database identifier.
personID	Internal database identifier.
calendarID	Internal database identifier.
structureID	Internal database identifier.
membershipDays	Count of instructional days student was enrolled.
attendanceDays	Calculated number of days student was present.
ADM	Calculation that determines student's Average Daily Membership.

ADA	Calculation that determines student's Average Daily Attendance.
-----	---

Student > Learner > Programs

Filter Field	Mapping and Definition
districtID	Internal database identifier.
personID	Internal database identifier.
programID	Internal database identifier.
name	<i>System Administration > Student > Programs</i> Name of program.
programDescription	<i>System Administration > Student > Programs</i> Definition of program as defined in System Administration > Student > Programs .
code	<i>System Administration > Student > Programs</i> Code assigned to program.
flagged	<i>System Administration > Student > Programs</i> If flagged, checkbox indicates a program alert flag will appear next to student's name on Student Information tab.
flagImage	<i>System Administration > Student > Programs</i> Selection of appropriate flag image associated with program.
curriculum	<i>System Administration > Student > Programs</i> If flagged, checkbox indicates program is curriculum-related.
medical	<i>System Administration > Student > Programs</i> If flagged, checkbox indicates program is a medical program or alert.
contact	<i>System Administration > Student > Programs</i> If flagged, checkbox indicates program is a reference to an emergency contact.
startDate	<i>Student Information > General > Programs</i> Start date of student's participation in the program.
endDate	<i>Student Information > General > Programs</i> End date of student's participation in the program.
eligibilityStartDate	<i>Student Information > General > Programs</i> Date student was eligible to start participation in the program.
eligibilityEndDate	<i>Student Information > General > Programs</i> Date student's eligibility ended for participation in the program.
userWarning	<i>Student Information > General > Programs</i> User-entered text specific to student that appears on mouse hover of student's program flag.

studentDescription	<i>Student Information > General > Programs</i> User-entered text specific to student that provides description of flag.
participationDetails	<i>Student Information > General > Programs</i> Text field for entering program participation details.
elSettingCode	<i>Student Information > General > Programs</i> Elementary setting code.
elInstructionalSupport	<i>Student Information > General > Programs</i> Indicate ELL support as part of the program.
identifier	Internal database identifier
exitReason	<i>Student Information > General > Programs</i> Reason student left program.
type	<i>Student Information > General > Programs</i> Type of program
concentrator	<i>Grading & Standards > Programs</i> Indicates student is a concentrator in the program.
programCategory	<i>Student Information > General > Programs</i> Category assigned to the program.

Student > Learner > Waiver

Filter Field	Mapping and Definition
waiverID	Internal database identifier
personID	Internal database identifier
type	<i>Student Information > General > Waiver</i> Type of waiver assigned to student (usually instructional).
date	<i>Student Information > General > Waiver</i> Date waiver was entered.
status	<i>Student Information > General > Waiver</i> Indicates whether or not the waiver was granted to the student.
statusDate	<i>Student Information > General > Waiver</i> Date waiver was granted/denied.

Student > Learner > Schedule

Filter Field	Mapping and Definition
--------------	------------------------

rosterID	Internal database identifier.
trialID	Internal database identifier.
personID	Internal database identifier.
sectionID	Internal database identifier.
startDate	<i>Scheduling > Course > Section > Roster</i> Start date of the student's membership in the course section.
endDate	<i>Scheduling > Course > Section > Roster</i> End date of the student's membership in the course section.
lock	Indicates that the roster may not be changed. Rosters are locked within the Schedule Wizard.
stateUseFlag	<i>Does not appear.</i> Internal database identifier
modifiedDate	<i>Scheduling > Course > Section > Roster</i> Date of last change to record.
modifiedByID	<i>Does not appear.</i> Lists the person who modified the information.
repeatCourse	Indicates that the student has taken this course in the past. Not used in all states.
legacyKey	Used during data conversion.
courseCode	<i>Scheduling > Course > Section > Roster</i> Type of course code.
specialCode	<i>Scheduling > Course > Section > Roster</i> Special code associated with the roster.
noCredit	<i>Scheduling > Course > Section > Roster</i> Indicates student receives no credit.
status	<i>Student Information > General > Schedule > Walk-In Schedule > Select a Roster</i> Indicates the student's status in the course.
Course/Section	<i>Learner > Schedule > Course/Section</i> As of the .1138 Release Pack, logic has been updated to use the courseSection view. This update allows teachers to generate information about students within their course rosters.
courseID	Internal database identifier.
calendarID	Internal database identifier.
trialID	Internal database identifier.

courseNumber	<i>Scheduling > Courses</i> Course number.
courseName	<i>Scheduling > Courses</i> Course name.
stateCode	<i>Scheduling > Courses</i> State code associated with this course.
description	<i>Scheduling > Courses</i> User-entered course description.
descriptionNoHTML	<i>Scheduling > Courses</i> User-entered course description devoid of HTML tags.
active	Internal identifier that indicates whether the course's active flag is checked.
type	<i>Scheduling > Courses</i> A type flag used in state reports while scheduling. Values include R: Required, E: Elective or a blank field.
programType	<i>Scheduling > Courses</i> Stores the type of program the course is related to.
teachingMethod	<i>Scheduling > Courses</i> Stores the teaching method of the course. May not be used in all states.
homeroom	<i>Scheduling > Courses > Section</i> If flagged, checkbox indicates course is designated as a homeroom for state reporting purposes.
homeroomSection	<i>Scheduling > Courses > Section</i> Indicates that the section is homeroom for the students.
transcript	<i>Scheduling > Courses</i> Indicates whether or not the course should be posted to transcript.
requestable	<i>Scheduling > Courses</i> Indicates whether or not the course is available for request via the portal.
required	<i>Scheduling > Courses</i> Indicates whether or not the course is a required course.
attendace	<i>Scheduling > Courses</i> Indicates attendance should be taken in the course.
unitAttendance	<i>Scheduling > Courses</i> Indicates whether or not the course has unit attendance.
distanceCode	<i>Scheduling > Courses</i> Instructional setting of course.

honorsCode	<i>Scheduling > Courses</i> Difficulty level of course.
activityCode	<i>Scheduling > Courses</i> The district-defined activity code of the course for tracking activity rosters and groups.
terms	<i>Scheduling > Courses</i> Stores the number of terms the course meets.
schedules	<i>Scheduling > Courses</i> Determines how many days a section will take up in schools with multiple period schedules.
periods	<i>Scheduling > Courses</i> The number of periods a section of the course lasts.
gpaWeight	<i>Scheduling > Courses</i> The weight the course should contribute to a student's cumulative GPA.
maxStudents	<i>Scheduling > Courses</i> The maximum number of students who can be enrolled in the course.
courseMax	<i>Scheduling > Courses</i> The maximum number of students who can be enrolled in the course.
priority	<i>Scheduling > Courses</i> The priority of the course as related to others courses in the scheduling process.
sectionID	Internal database identifier.
sectionNumebr	<i>Scheduling > Courses</i> The number of sections that need to be built for the course in the schedule.
classType	<i>Scheduling > Courses > Section</i> Indicates the section's Type of class (e.g. traditional, self-contained). Not used in all states.
lunchCount	<i>Scheduling > Courses > Section</i> If flagged, checkbox indicates the lunch count field should be added to the attendance tool for this course section.
adultCount	<i>Scheduling > Courses > Section</i> If flagged, checkbox indicates the Adult Count field should be added to the Attendance tool for this course section.
milkCount	<i>Scheduling > Courses > Section</i> If flagged, checkbox indicates the milk count field should be added to the attendance tool for this course section.
serviceDistrict	<i>Scheduling > Courses > Section</i> Notes the name of the district where students receive special services.

serviceSchool	<i>Scheduling > Courses > Section</i> Notes the name of the school building where students receive special services.
teacherDisplay	<i>Scheduling > Courses > Sections</i> Stores the teacher name displayed on student schedules, default to fullname, may be changed in section editor.
teacherFullName	<i>Scheduling > Courses > Sections</i> Last name and first name of the teacher assigned to the section.
staffNumber	<i>Census > People > Demographics</i> Staff number of teacher assigned to section used within school and district.
staffStateID	<i>Census > People > Demographics</i> Staff ID used by the state.
personID	Internal database identifier of teacher assigned to section.
roomName	<i>Scheduling > Courses > Sections</i> Name associated with room as set up in System Administration > Resources > Resources > Rooms.
lunchName	<i>Scheduling > Courses > Sections</i> The name of the lunch scheduled with this section, when lunches are set up for scheduling in Scheduling > Lunches.
teamName	<i>Scheduling > Courses > Sections</i> Scheduling team to which this section is assigned.
departmentName	<i>Scheduling > Courses > Sections</i> District or school-defined department name for use in organizing curriculum as defined in System Administration > Resources > Resources > Departments.
giftedDelivery	<i>Scheduling > Courses > Sections</i> If flagged, checkbox indicates section is targeted at students receiving gifted services. May not be used in all districts.
giftedContentArea	<i>Scheduling > Courses > Sections</i> Identifies the state-defined gifted delivery area for this section. May not be used in all districts.
highlyQualified	<i>Scheduling > Courses > Sections</i> Indicates if teacher of section is considered highly qualified.
studentCount	<i>Scheduling > Courses > Sections</i> Number of students in section.
coursePart	<i>Scheduling > Courses > Course</i> Course sequence assigned to the course.
abbreviation	Abbreviation of the course name. Appears when searching.

grade	<i>Scheduling > Courses > Course</i> The grade related to the course.
<i>Section Schedule</i>	<i>Learner > Schedule > Course/Section > Section Schedule</i>
calendarID	Internal database identifier.
structureID	Internal database identifier.
trialID	Internal database identifier.
sectionID	Internal database identifier.
termStart	<i>Scheduling > Course > Section</i> Name of term in which section starts.
termEnd	<i>Scheduling > Course > Section</i> Name of term in which section ends.
terms	<i>Scheduling > Course > Section</i> Number of terms in which the course section takes place.
scheduleStart	<i>Scheduling > Course > Section</i> Name of period schedule in which section starts.
scheduleEnd	<i>Scheduling > Course > Section</i> Name of period schedule in which section ends.
schedules	<i>Scheduling > Course > Section</i> Number of period schedules a section will take up in schools with multiple period schedules.
periodStart	<i>Scheduling > Course > Section</i> Name of the period in which a section starts.
periodEnd	<i>Scheduling > Course > Section</i> Name of the period in which a section ends.
periods	<i>Scheduling > Course > Section</i> Number of periods the course section runs.

Student > Counselor

Filter Fields	Mapping and Definition
<i>Staff Member</i>	<i>Student > Counselor > Staff Member</i>
personID	Internal database identifier.
stateID	<i>Census > People > Demographics</i> Unique identifier issued to an individual by the state department of education for state reporting purposes.
staffNumber	<i>Census > People > Demographics</i> Staff number of teacher assigned to section used within school and district.
staffStateID	<i>Census > People > Demographics</i> Staff ID used by the state.
identityID	Internal database identifier.
effectiveDate	<i>Census > People > Demographics</i> Date identity became active
lastName	<i>Census > People > Demographics</i> Last name of student's counselor.
firstName	<i>Census > People > Demographics</i> First name of student's counselor.
middleName	<i>Census > People > Demographics</i> Middle name of student's counselor.
suffix	<i>Census > People > Demographics</i> Indication of Jr., Sr., III, IV, etc.
alias	<i>Census > People > Demographics</i> Nickname counselor uses instead of given name.
gender	<i>Census > People > Demographics</i> Male or Female.
birthdate	<i>Census > People > Demographics</i> The date of birth of the counselor.
raceEthnicity	<i>Census > People > Demographics</i> The race/ethnicity of the counselor.
employmentID	Internal database identifier.
assignmentID	Internal database identifier.
startDate	<i>Census > People > District Assignments</i> The start date of the counselor's district assignment.

endDate	<i>Census > People > District Assignments</i> The end date of the counselor's district assignment.
title	<i>Census > People > District Assignments</i> The position title of the student's counselor.
seniority	<i>Census > People > District Employment</i> The seniority level of the staff member.
type	<i>Census > People > District Assignments</i> Indicates the position of the staff member.
teacher	<i>Census > People > District Assignments</i> Denotes staff member as being a teacher.
specialEd	<i>Census > People > District Assignments</i> Denotes staff member as being a special education staff member.
behavior	<i>Census > People > District Assignments</i> Denotes staff member as being a behavior staff member.
health	<i>Census > People > District Assignments</i> Denotes staff member as being a health staff member.
advisor	<i>Census > People > District Assignments</i> Denotes staff member as being an advisor.
supervisor	<i>Census > People > District Assignments</i> Denotes staff member as being a supervisor.
foodservice	<i>Census > People > District Assignments</i> Denotes staff member as being a food service staff member.
departmentID	Internal database identifier.
schoolID	Internal database identifier.
schoolName	<i>Census > People > District Assignments</i> The school at which the counselor is a staff member.
schoolNumber	<i>System Administration > Resources > School</i> The identification number of the school at which the counselor is a staff member.
departmentName	<i>Census > People > District Assignments</i> The department designation of the counselor's district assignment.
excludeReferral	<i>Census > People > District Assignments</i> Denotes staff member as being excluded from behavior referral records.
counselor	<i>Census > People > District Assignments</i> Denotes staff member as being a counselor.
Contact Log	<i>Student > Counselor > Contact Log</i>

logID	Internal database identifier.
personID	Internal database identifier.
districtID	Internal database identifier.
dateTimeStamp	<i>Student Information > Counseling > Contact Log</i> The date and time counselor contact was made.
text	<i>Student Information > Counseling > Contact Log</i> Any text comments associated with the contact record.
contactByID	<i>Student Information > Counseling > Contact Log</i> The individual who contacted the student.
module	<i>Student Information > Counseling > Contact Log</i> The contact module, in this case, Counseling.
contactType	<i>Student Information > Counseling > Contact Log</i> The individual who was contacted.
contactMode	<i>Student Information > Counseling > Contact Log</i> The method used to contact the student.
logGUID	Internal database identifier.



Student > Learner Planning

Filter Fields	Mapping and Definition
<i>Evaluations</i>	<i>Student > Learner Planning > Evaluations</i>
districtID	Internal database identifier.
evalID	Internal database identifier.
personID	Internal database identifier.
evalDate	<i>Student Information > Special Ed > Documents > Evaluation</i> Date of evaluation.
determinationDate	<i>Student Information > Special Ed > Documents > Evaluation</i> The date a decision was made on a student's eligibility.
type	<i>Student Information > Special Ed > Documents > Evaluation</i> Type of evaluation.
locked	<i>Student Information > Special Ed > Documents > Evaluation</i> Indicates evaluation cannot be modified.
consentDate	<i>Student Information > Special Ed > Documents > Evaluation</i> Date consent to evaluation was received.

referralDate	<i>Student Information > Special Education > Documents > Evaluation</i> Date student was referred for evaluation.
evalCompliance	<i>Student Information > Special Education > Documents > Evaluation</i> Indicates student is compliant with the evaluation.
background	<i>Student Information > Special Ed > Documents > Evaluation</i> Background information on parents and/or school personnel and details on referral reasons.
intellectual	<i>Student Information > Special Ed > Documents > Evaluation</i> Review of existing data and current assessment results of intellectual information.
academic	<i>Student Information > Special Ed > Documents > Evaluation</i> Review of existing data and current assessment results of academic information.
communication	<i>Student Information > Special Ed > Documents > Evaluation</i> Review of existing data and current assessment results of communication information.
motor	<i>Student Information > Special Ed > Documents > Evaluation</i> Review of existing data and current assessment results of motor information.
functional	<i>Student Information > Special Ed > Documents > Evaluation</i> Review of existing data and current assessment results of functional skills information.
health	<i>Student Information > Special Ed > Documents > Evaluation</i> Review of existing data and current assessment results of health/ sensory/ physical status information.
social	<i>Student Information > Special Ed > Documents > Evaluation</i> Review of existing data and current assessment results of social/emotional/ behavioral development information.
transition	<i>Student Information > Special Ed > Documents > Evaluation</i> Review of existing data and current assessment results of transition information.
classroomObservations	<i>Student Information > Special Ed > Documents > Evaluation</i> Classroom observations.
educationalNeeds	<i>Student Information > Special Ed > Documents > Evaluation</i> Interpretation and summary of results as related to eligibility criteria and learner-based special education needs.
noDisability	<i>Student Information > Special Ed > Documents > Evaluation</i> If flagged, checkbox indicates student did not meet special education eligibility requirements because he/she did not have a disability.

noNeed	<i>Student Information > Special Ed > Documents > Evaluation</i> If flagged, checkbox indicates student did not meet special education eligibility requirements because he/she did not demonstrate current need for services.
noInstruction	<i>Student Information > Special Ed > Documents > Evaluation</i> If flagged, checkbox indicates student did not meet special education eligibility requirements because his/her learning difficulty is due to lack of instruction in reading or math or due to limited English proficiency.
noQualify	<i>Student Information > Special Ed > Documents > Evaluation</i> If flagged, checkbox indicates student did not meet special education eligibility requirements because he/she no longer qualifies for services.
noEligible	<i>Student Information > Special Ed > Documents > Evaluation</i> If flagged, checkbox indicates student did not meet special education eligibility requirements because he/she is no longer eligible under developmental delay criteria and does not meet other criteria.
hasDisability	<i>Student Information > Special Ed > Documents > Evaluation</i> If flagged, checkbox indicates student is eligible for special education because he/she meets entrance criteria for disabilities upon initial evaluation.
hasNeed	<i>Student Information > Special Ed > Documents > Evaluation</i> If flagged, checkbox indicates student is eligible for special education because he/she continues to have a disability and demonstrates need for services upon reevaluation.
hasQualify	<i>Student Information > Special Ed > Documents > Evaluation</i> If flagged, checkbox indicates student is eligible for special education because he/she qualifies through a team override decision.
autism	<i>Student Information > Special Ed > Documents > Evaluation</i> <i>Student Information > PLP > Documents > Evaluation</i> If flagged, indicates student meets special education eligibility because his/her disability is autism.
deafHearing	<i>Student Information > Special Ed > Documents > Evaluation</i> If flagged, indicates student meets special education eligibility because his/her disability is hearing impaired.
deafBlind	<i>Student Information > Special Ed > Documents > Evaluation</i> If flagged, indicates student meets special education eligibility because his/her disability is deafness/blindness.
delay	<i>Student Information > Special Ed > Documents > Evaluation</i> If flagged, indicates student meets special education eligibility because his/her disability falls in the early childhood special education category.

emotional	<i>Student Information > Special Ed > Documents > Evaluation</i> If flagged, indicates student meets special education eligibility because his/her disability is emotional/behavioral.
mildImpaired	<i>Student Information > Special Ed > Documents > Evaluation</i> If flagged, indicates student meets special education eligibility because his/her disability is mildly to moderately developmental/ cognitive.
severeImpaired	<i>Student Information > Special Ed > Documents > Evaluation</i> If flagged, indicates student meets special education eligibility because his/her disability is severely to profoundly developmental/ cognitive.
other	<i>Student Information > Special Ed > Documents > Evaluation</i> If flagged, indicates student meets special education eligibility because his/her disability is other (non-specified) health.
physical	<i>Student Information > Special Ed > Documents > Evaluation</i> If flagged, indicates student meets special education eligibility because his/her disability is physical impairment.
multiple	<i>Student Information > Special Ed > Documents > Evaluation</i> If flagged, indicates student meets special education eligibility because his/her disability is severe, multiple impairment.
sld	<i>Student Information > Special Ed > Documents > Evaluation</i> If flagged, indicates student meets special education eligibility because his/her disability is a specific learning disability (SLD).
speech	<i>Student Information > Special Ed > Documents > Evaluation</i> If flagged, indicates student meets special education eligibility because his/her disability is speech/language impairment.
tbi	<i>Student Information > Special Ed > Documents > Evaluation</i> If flagged, indicates student meets special education eligibility because his/her disability is traumatic brain injury (TBI).
visual	<i>Student Information > Special Ed > Documents > Evaluation</i> If flagged, indicates student meets special education eligibility because his/her disability is visual impairment.
ecTransitionDate	<i>Student Information > Special Ed > Documents > Evaluation</i> The date the student transitioned from Early Childhood services.
ecReferringAgency	<i>Student Information > Special Ed > Documents > Evaluation</i> The agency ID for the Early Childhood agency referring the student.
disability1	<i>Student Information > Special Ed > Documents > Evaluation</i> The student's primary disability.
disability2	<i>Student Information > Special Ed > Documents > Evaluation</i> Student's additional disability

disability3	<i>Student Information > Special Ed > Documents > Evaluation</i> Student's additional disability
disability4	<i>Student Information > Special Ed > Documents > Evaluation</i> Student's additional disability
disability5	<i>Student Information > Special Ed > Documents > Evaluation</i> Student's additional disability
createdByID	Internal database identifier.
createdDate	<i>Student Information > Special Ed > Documents > Evaluation</i> Auto-inserted date of learning plan creation.
modifiedByID	<i>Does not appear.</i> Lists the person who modified the information.
modifiedDate	<i>Student Information > Special Ed > Documents > Evaluation</i> Auto-inserted date of last modifications to learning plan.
createdByName	<i>Student Information > Special Ed > Documents > Evaluation</i> Auto-inserted name of user creating learning plan.
modifiedByName	<i>Student Information > Special Ed > Documents > Evaluation</i> Auto-inserted name of user modifying learning plan.
Learning Plans	<i>Student > Learner Planning > Learning Plans</i>
districtID	Internal database identifier.
planID	Internal database identifier.
personID	Internal database identifier.
typeID	Internal database identifier.
name	<i>Student Information > Special Ed > Documents > Plan</i> <i>Student Information > PLP > Documents > Plan</i> Name of special education or personal learning plan (PLP or IEP) as selected from the Create a New Form area. <div>  The Create a New Form area is managed in <i>System Administration > PLP Plan Types</i> or <i>System Administration > Special Ed > Plan Types</i>. </div>
abbreviation	<i>Student Information > Special Ed > Documents > Plan</i> <i>Student Information > PLP > Documents > Plan</i> Abbreviation of special education or personal learning plan (PLP or IEP). <div>  The abbreviation is managed in <i>System Administration > PLP Plan Types</i> or <i>System Administration > Special Ed > Plan Types</i>. </div>

type	Student Information > Special Ed > Documents > Plan Student Information > PLP > Documents > Plan Type of personal learning plan (PLP or IEP).
planStartDate	Student Information > Special Ed > Documents > Plan Student Information > PLP > Documents > Plan Date user started participating in personal learning plan (PLP or IEP).
planEndDate	Student Information > Special Ed > Documents > Plan Student Information > PLP > Documents > Plan Date user ended participation in personal learning plan (PLP or IEP).
locked	Student Information > Special Ed > Documents > Plan Student Information > PLP > Documents > Plan If flagged, checkbox indicates that the plan cannot be edited.
label	Student Information > PLP > Documents > Plan User-entered name assigned to PLP.
meetingDate	Student Information > Special Ed > Documents > Plan Date of scheduled IEP team meeting.
creatingByID	Does not appear ID number of the record creator.
createdDate	Student Information > Special Ed > Documents > Plan Student Information > PLP > Documents > Plan Date on which plan was created.
modifiedByID	Does not appear. Lists the person who modified the information.
modifiedDate	Student Information > Special Ed > Documents > Plan Student Information > PLP > Documents > Plan Date on which plan was last modified.
planManagerName	Student Information > Special Ed > Documents > Plan Student Information > PLP > Documents > Plan Name of plan administrator, usually the staff member designated as the Case Manager for IEPs or the Team Manager for PLPs.
createdByName	Student Information > Special Ed > Documents > Plan Student Information > PLP > Documents > Plan Name of user who created plan.
modifiedByName	Student Information > Special Ed > Documents > Plan Student Information > PLP > Documents > Plan Name of user who modified plan.

transferRightsDate	<i>Student Information > Special Ed > Documents > Plan</i> <i>Student Information > PLP > Documents > Plan</i> Date student was informed of the transfer of rights at age of majority.
evalDate	<i>Student Information > Special Ed > Documents > Plan</i> Date recorded as the evaluation date on an IEP.
disability1	<i>Student Information > General > Enrollments</i> Student's primary disability.
disability2	<i>Student Information > General > Enrollments</i> Student's secondary disability.
disability3	<i>Student Information > General > Enrollments</i> Student's third disability.
disability4	<i>Student Information > General > Enrollments</i> Student's fourth disability.
disability5	<i>Student Information > General > Enrollments</i> Student's fifth disability.
specialEdStatus	<i>Student Information > General > Enrollments</i> Student's special education status (e.g. active, not eligible, referred).
specialEdSetting	<i>Student Information > General > Enrollments</i> Type of special education setting/accommodations (e.g. residential facility, separate school, <40% day in general education programs)
language	<i>Student Information > General > Enrollments</i> Student's home language.
residentDistrictNumber	<i>Student Information > General > Enrollments</i> <i>Student Information > Special Ed > Documents > Plan</i> <i>Student Information > PLP > Documents > Plan</i> Name and code of student's district of residence.
stateID	<i>Student Information > Special Ed > Documents > Plan</i> Unique identifier issued to a student by the state department of education for state reporting purposes.
extendedYear	<i>Student Information > Special Ed > Documents > Plan</i> Code indicates whether extended school year services are required for student when the Extended School Year editor is set up and active in System Administration > Special Ed > Plan Types.
alteredDay	<i>Student Information > Special Ed > Documents > Plan</i> Code indicates whether the student's day is altered. Available if the Altered School Day editor is used in an IEP, as set up and activated in System Administration > Special Ed > Plan Types.

testParticipation	<p>Student Information > Special Ed > Documents > Plan</p> <p>Code indicates whether the student will participate with accommodations:</p> <ul style="list-style-type: none"> • 1 = will participate without accommodations; • 2 = will participate with accommodations; • 3 = will participate with modifications; • 4 = alternate assessment. <p>Available when Assessment Accommodation editors are used in an IEP as set up and activated within System Administration > Special Ed > Plan Types.</p>
readingLevel	<p><i>Student Information > Special Ed > Documents > IEP</i></p> <p>Indicates reading assessment accommodations: alternate (value = exempt) or state (value = state). Available when Assessment Accommodation editors are used in an IEP as set up and activated within System Administration > Special Ed > Plan Types.</p>
readingDate	<p><i>Student Information > Special Ed > Documents > IEP</i></p> <p>The date the student passed the reading assessment. Available when Assessment Accommodation editors are used in an IEP as set up and activated within System Administration > Special Ed > Plan Types.</p>
readingIndividual	<p><i>Student Information > Special Ed > Documents > IEP</i></p> <p>The individual reading assessment value for the student. Available when Assessment Accommodation editors are used in an IEP as set up and activated within System Administration > Special Ed > Plan Types.</p>
mathLevel	<p><i>Student Information > Special Ed > Documents > IEP</i></p> <p>Indicates math assessment accommodations: alternate (value = exempt) or state (value = state). Available when Assessment Accommodation editors are used in an IEP as set up and activated within System Administration > Special Ed > Plan Types.</p>
mathDate	<p><i>Student Information > Special Ed > Documents > IEP</i></p> <p>The date the student passed the math assessment. Available when Assessment Accommodation editors are used in an IEP as set up and activated within System Administration > Special Ed > Plan Types.</p>
mathIndividual	<p><i>Student Information > Special Ed > Documents > IEP</i></p> <p>The individual math assessment value for the student. Available when Assessment Accommodation editors are used in an IEP as set up and activated within System Administration > Special Ed > Plan Types.</p>
writingLevel	<p><i>Student Information > Special Ed > Documents > IEP</i></p> <p>Indicates writing assessment accommodations: alternate (value = exempt) or state (value = state). Available when Assessment Accommodation editors are used in an IEP as set up and activated within System Administration > Special Ed > Plan Types.</p>

writingDate	<p><i>Student Information > Special Ed > Documents > IEP</i></p> <p>The date the student passed the writing assessment. Available when Assessment Accommodation editors are used in an IEP as set up and activated within System Administration > Special Ed > Plan Types.</p>
writingIndividual	<p><i>Student Information > Special Ed > Documents > IEP</i></p> <p>The individual writing assessment value for the student. Available when Assessment Accommodation editors are used in an IEP as set up and activated within System Administration > Special Ed > Plan Types.</p>
test2Participation	<p><i>Student Information > Special Ed > Documents > IEP</i></p> <p>Code indicates whether student will participate with accommodations:</p> <ul style="list-style-type: none"> • 1 = will participate, no accommodations; • 2 = will participate with accommodations; • 3 = alternate assessment. <p>Available when Assessment Accommodation editors are used in an IEP as set up and activated within System Administration > Special Ed > Plan Types.</p>
test3Participation	<p><i>Student Information > Special Ed > Documents > IEP</i></p> <p>Code indicates whether student will participate with accommodations:</p> <ul style="list-style-type: none"> • 1 = will participate, no accommodations; • 2 = will participate with accommodations; • 3 = alternate assessment. <p>Available when Assessment Accommodation editors are used in an IEP as set up and activated within System Administration > Special Ed > Plan Types.</p>
Service	<i>Student > Learning Planing > Learning Plans > Service</i>
personID	Internal database identifier.
serviceID	Internal database identifier.
providerID	Internal database identifier.
planID	Internal database identifier.
locationGED	<p><i>Student Information > Special Ed > Documents > Plan</i></p> <p>Value of General Ed Location field used in conjunction with services provided for an IEP. SPED Services and related services are added to IEP formats in System Administration > Special Ed > Plan Types. Services are defined in System Administration > Special Ed > Services.</p>

locationSPED	<p><i>Student Information > Special Ed > Documents > Plan</i></p> <p>Value of Special Ed Location field used in conjunction with services provided for an IEP. SPED services and related services are added to IEP formats in System Administration > Special Ed > Plan Types. Services are defined in System Administration > Special Ed > Services.</p>
serviceFrequency	<p><i>Student Information > Special Ed > Documents > Plan</i></p> <p>Value of Service Frequency Number of Sessions field used in conjunction with services provided for an IEP. SPED services and related services are added to IEP formats in System Administration > Special Ed > Plan Types. Services are defined in System Administration > Special Ed > Services</p>
serviceFreqPeriod	<p><i>Student Information > Special Ed > Documents > Plan</i></p> <p>Value of Service Frequency field used in conjunction with services provided for an IEP. SPED services and related services are added to IEP formats in System Administration > Special Ed > Plan Types. Services are defined in System Administration > Special Ed > Services.</p>
serviceIndirect	<p><i>Student Information > Special Ed > Documents > Plan</i></p> <p>Value of Minutes Per Session - Indirect field used in conjunction with services provided for an IEP. SPED services and related services are added to IEP formats in System Administration > Special Ed > Plan Types. Services are defined in System Administration > Special Ed > Services.</p>
serviceDirect	<p><i>Student Information > Special Ed > Documents > Plan</i></p> <p>Value of Minutes Per Session - Direct field used in conjunction with services provided for an IEP. SPED services and related services are added to IEP formats in System Administration > Special Ed > Plan Types. Services are defined in System Administration > Special Ed > Services.</p>
serviceStartDate	<p><i>Student Information > Special Ed > Documents > Plan</i></p> <p>Date special education services became effective, as entered in Start Date field used in conjunction with services provided for an IEP. SPED services and related services are added to IEP formats in System Administration > Special Ed > Plan Types. Services are defined in System Administration > Special Ed > Services.</p>
serviceEndDate	<p><i>Student Information > Special Ed > Documents > Plan</i></p> <p>Date special education services became ineffective, as entered in End Date field used in conjunction with services provided for an IEP. SPED services and related services are added to IEP formats in System Administration > Special Ed > Plan Types. Services are defined in System Administration > Special Ed > Services.</p>
serviceName	<p><i>Student Information > Special Ed > Documents > Plan</i></p> <p>Name of service (e.g. physical therapy, audiology, counseling) selected from the Service dropdown list.</p>
providerName	<p><i>Student Information > Special Education > Documents > Plans > Services</i></p> <p>Name of provider giving service.</p>

totalMinutesPerSession	<i>Student Information > Special Ed > Documents > Plan</i> Total number of service minutes per special education session, calculated by adding <i>serviceIndirect</i> and <i>serviceDirect</i> minutes.
totalSessions	Total number of instructional days calculated from service start and end date duration divided by <i>serviceFrequency</i> .
totalDirectMinutes	Total number of direct minutes calculated by value of <i>totalSessions</i> multiplied by value of <i>serviceDirect</i> .
totalIndirectMinutes	Total number of indirect minutes calculated by value of <i>totalSessions</i> multiplied by value of <i>serviceIndirect</i> .
totalServiceMinutes	Total number of service minutes calculated from service start and end date multiplied by <i>serviceFrequency</i> and then by multiplying session minutes by the number of sessions.
linkedPersonID	Internal database identifier.
linkedName	<i>System Administration > Special Ed > Service Providers</i> <i>System Administration > PLP > Service Providers</i> Name of service provider linked to that person's demographic tab.
providerSSN	<i>System Administration > Special Ed > Service Providers</i> <i>System Administration > PLP > Service Providers</i> SSN of service provider if linked to person's demographic tab.
Course Requests	<i>Student > Learner Planning > Course Requests</i>
requestID	Internal database identifier.
calendarID	Internal database identifier.
personID	Internal database identifier.
courseID	Internal database identifier.
type	<i>Student Information > Schedule > Walk-in Scheduler</i> Type of course requested. R = Required, E = Elective, A = Alternate.
teacherRequestSectionID	Internal database identifier.
conflictReason	<i>Does not appear.</i> The reason code for a scheduling conflict.
teacherRequestSectionID	Internal database identifier
Course	<i>Student > Learner Planning > Course Requests > Course</i>
courseID	Internal database identifier.
courseMasterID	Internal database identifier.

calendarID	Internal database identifier.
departmentID	Internal database identifier.
number	<i>Scheduling > Courses</i> Course number.
stateCode	<i>Scheduling > Courses</i> State code associated with this course.
name	<i>Scheduling > Courses</i> Course name.
description	<i>Scheduling > Courses</i> User-entered course description.
comments	<i>Scheduling > Courses</i> User-entered comments on course.
active	<i>Scheduling > Courses</i> Flagged to note that this is an active course, which can be scheduled in the current calendar.
type	<i>Scheduling > Courses</i> Type of course requested. R = Required, E = Elective, A = Alternate.
teachingMethod	<i>Scheduling > Courses</i> Stores the teaching method of the course.
vocationalCode	<i>Scheduling > Courses</i> Stores the vocational code of the course.
distanceCode	<i>Scheduling > Courses</i> Instructional setting of course.
honorsCode	<i>Scheduling > Courses</i> Difficulty level of course.
activityCode	<i>Scheduling > Courses</i> The district-defined activity code of the course for tracking activity rosters and groups.
homeroom	<i>Scheduling > Courses > Section</i> Indicates whether or not the course is designated as a homeroom for state reporting purposes. district-defined
transcript	<i>Scheduling > Courses</i> Indicates whether or not the course should be posted to the transcript.
requestable	<i>Scheduling > Courses</i> Indicates whether or not the course is available for request via the portal.

required	<i>Scheduling > Courses</i> Indicates whether or not the course is a required course.
attendance	<i>Scheduling > Courses</i> Indicates attendance should be taken in the course.
unitAttendance	<i>Scheduling > Courses</i> Indicates whether or not the course has unit attendance.
terms	<i>Scheduling > Courses</i> Stores the number of terms the course meets, which can be used by the Schedule Wizard (not required).
schedules	<i>Scheduling > Courses</i> Determines how many days a section will take up in schools with multiple period schedules, which can be used by the Schedule Wizard (not required).
periods	<i>Scheduling > Courses</i> The number of periods a section of the course meets, which can be used by the Schedule Wizard (not required).
gpaWeight	<i>Scheduling > Courses</i> The weight the course should contribute to a student's cumulative GPA.
bonusPointsAvail	<i>Scheduling > Courses</i> Indicates whether or not bonus points are available.
maxStudents	<i>Scheduling > Courses</i> The maximum number of students who can be enrolled in the course.
priority	<i>Scheduling > Courses</i> The priority of the course as related to others courses in the scheduling process.
sectionsToBuild	<i>Scheduling > Courses</i> The number of sections that need to be built for the course in the schedule, which can be used by the Schedule Wizard (not required).
pseoType	<i>Scheduling > Courses</i> Stores the PSEO number in the Community College CTDS field. Not used in all states.
pseoCredit	<i>Scheduling > Courses</i> Stores the number of PSEO credits the course is worth. Not used in all states.
specialEdCode	<i>Scheduling > Courses</i> Stores the special education code for the course.
coursePart	<i>Scheduling > Courses</i> Stores the course part for the course.
grade	<i>Scheduling > Courses</i> Stores the grade in school the course is related to.

program	<i>Scheduling > Courses</i> Stores the program the course is related to.
legacyKey	Used during data conversion.
programType	<i>Scheduling > Courses</i> Stores the type of program the course is related to.
technology	<i>Scheduling > Courses</i> Indicates whether or not it is classified as a technology course.
highlyQualified	<i>Scheduling > Courses > Section</i> Designates whether the teacher of a course is considered highly qualified to teach course section.
allowTeacherRequests	<i>Scheduling > Courses</i> If flagged, checkbox allows a teacher to request the course for students.
standardsBased	<i>Scheduling > Courses</i> If flagged, checkbox indicates course uses only standards-based grading.
specialCode	<i>Student Information > General > Transcript > Transcript Course Editor</i> Special code assigned to the course.
abbreviation	<i>Does not appear.</i> Abbreviation of the course name. Appear when searching for the course.
altStateCode	<i>Scheduling > Courses > Courses</i> Alternative state code associated with this course. Not available in all states.
transriptField1	<i>Student Information > General > Transcript > Transcript Course Editor</i> Definition of transcript item.
transriptField2	<i>Student Information > General > Transcript > Transcript Course Editor</i> Definition of transcript item.
transriptField3	<i>Student Information > General > Transcript > Transcript Course Editor</i> Definition of transcript item.
transriptField4	<i>Student Information > General > Transcript > Transcript Course Editor</i> Definition of transcript item.
transriptField5	<i>Student Information > General > Transcript > Transcript Course Editor</i> Definition of transcript item.
coreSubject	<i>Scheduling > Courses > Course</i> Tracks the number of teachers who are considered highly qualified in the same core subject area as the classes they teach.
subjectType	<i>Scheduling > Courses > Course</i> Defines the type of subject the course aims to teach.
courseGUID	Internal database identifier.

lock	<i>Scheduling > Courses > Course</i> Indicates the section is locked.
acceleratedCourse	<i>Scheduling > Courses > Course</i> A course that can be completed in less than the normal amount of time.
dualEnrollmentCourse	<i>Scheduling > Courses > Course</i> Indicates that course carries both high school and college credit.
honorsCourse	<i>Scheduling > Courses > Course</i> Indicates a course offered to academically advanced students.
substituteCredit	<i>Scheduling > Courses > Course</i> Indicates the course is used to give students another option for where the course credit is used. This field is not available in all states.
secondaryCredit	<i>Scheduling > Courses > Course</i> Indicates the student receives additional credit for another course type. This field is not available in all states.
level	<i>Scheduling > Courses > Course</i> Indicates the level of the course. This field is not available in all states.
Contact Log	<i>Student > Learner Planning > Contact Log</i>
logID	Internal database identifier.
personID	Internal database identifier.
districtID	Internal database identifier.
dateTimeStamp	<i>Student Information > PLP > Contact Log</i> The date and time counselor contact was made.
text	<i>Student Information > PLP > Contact Log</i> Any text comments associated with the contact record.
contactByID	<i>Student Information > PLP > Contact Log</i> The individual who contacted the student.
module	<i>Student Information > PLP > Contact Log</i> The contact module, in this case, PLP.
contactType	<i>Student Information > PLP > Contact Log</i> The individual who was contacted.
contactMode	<i>Student Information > PLP > Contact Log</i> The method used to contact the student.
logGUID	Internal database identifier.

Student > Census

Filter Field	Mapping and Definition
<i>Student Contacts</i>	<i>Student > Census > Student Contacts</i>
personID	Internal database identifier.
homePhone	<i>Census > People > Demographics</i> Home phone number for the associated person.
workPhone	<i>Census > People > Demographics</i> Work phone number of the associated person.
cellPhone	<i>Census > People > Demographics</i> Cell phone number of the associated person.
pager	<i>Census > People > Demographics</i> Pager number of the associated person.
email	<i>Census > People > Demographics</i> Email address of the associated person.
comments	<i>Census > People > Demographics</i> User-entered comments on personal contact information.
homePhonePrivate	<i>Census > People > Demographics</i> If flagged, checkbox indicates the home phone for this person should not be published.
workPhonePrivate	<i>Census > People > Demographics</i> If flagged, checkbox indicates the work phone for this person should not be published.
cellPhonePrivate	<i>Census > People > Demographics</i> If flagged, checkbox indicates the cell phone for this person should not be published.
pagerPrivate	<i>Census > People > Demographics</i> If flagged, checkbox indicates the pager number for this person should not be published.
emailPrivate	<i>Census > People > Demographics</i> If flagged, checkbox indicates the email address for this person should not be published.
homePhoneMessenger	<i>Census > People > Demographics</i> Number indicating which types of messages a contact will receive on his/her home phone.
workPhoneMessenger	<i>Census > People > Demographics</i> Number indicating which types of messages a contact will receive on his/her work phone.

cellPhoneMessenger	<i>Census > People > Demographics</i> Number indicating which types of messages a contact will receive on his/her cell phone.
emailMessenger	<i>Census > People > Demographics</i> Number indicating which types of messages a contact will receive in his/her email.
inboxMessenger	<i>Census > People > Demographics</i> Number indicating which types of messages a contact will receive in his/her Campus Process Inbox.
communicationLanguage	<i>Census > People > Demographics</i> Stores the preferred communication language for this person used in conjunction with Messenger.
modifiedByID	<i>Does not appear.</i> Lists the person who modified the information.
modifiedDate	<i>Does not appear.</i> Date of last change.
cellPhoneTxtMsg	<i>Census > People > Demographics</i> Indicates that person's cell phone number can receive text messages through messenger (only in Text Messaging enabled districts).
<i>Household Contact Summary</i>	<i>Student > Census > Household Contact Summary</i>
districtID	Internal database identifier.
personID	Internal database identifier.
relatedBy	System determination of contact/student relationship: <ul style="list-style-type: none"> • Household = The people are considered related because they share the same household. • Relationship = The people are considered related because they have a relationship other than a shared household.
contactID	Internal database identifier.
contactGUID	Internal database identifier.
private	<i>Census > Household > Addresses</i> If flagged, checkbox indicates contact details are to remain unpublished in ad hoc queries and third-party mailing lists.
secondary	<i>Census > Household > Addresses</i> Flag determines if the household this person is a member of is their secondary household.

mailing	<i>Census > Household > Addresses</i> If flagged, checkbox indicates guardian may be contacted at mailing address of household.
guardian	<i>Census > People > Relationships</i> If flagged, checkbox indicates member is a guardian of the household.
portal	<i>Census > People > Relationships</i> If flagged, checkbox indicates guardian may be contacted via portal.
messenger	<i>Census > People > Relationships</i> If flagged, checkbox indicates guardian may be contacted via messenger.
householdID	Internal database identifier.
householdPhone	<i>Census > Households</i> The phone number for the household.
householdName	<i>Census > Households</i> The name of the household.
personGUID	Internal database identifier.
contactPersonID	Internal database identifier.
studentNumber	<i>Census > People > Demographics</i> The unique numerical identifier assigned to a student enrolled in a school that can be formatted to district preferences and is used in state reporting.
staffNumber	<i>Census > People > Demographics</i> Staff number used within school and district.
staffStateID	<i>Census > People > Demographics</i> Staff ID used by the state.
lastName	<i>Census > People > Demographics</i> Last name of current identity.
firstName	<i>Census > People > Demographics</i> First name of current identity.
middleName	<i>Census > People > Demographics</i> Middle name of current identity.
suffix	<i>Census > People > Demographics</i> Indication of Jr. Sr. III, IV, etc. of current identity.
gender	<i>Census > People > Demographics</i> Male or female.
birthdate	<i>Census > People > Demographics</i> Birth date of person.

relationship	<i>Census > People > Relationships</i> Name of the relationship between the person and the contact.
seq	<i>Census > People > Relationships</i> Sequence number given to a relationship.
grade	<i>Student Information > General > Enrollments</i> Notes the grade level of the student.
calendarName	<i>System Administration > Calendar > Calendar</i> Name of school calendar.
homePhone	<i>Census > People > Demographics</i> Home phone number for the associated person.
workPhone	<i>Census > People > Demographics</i> Work phone number for the associated person.
cellPhone	<i>Census > People > Demographics</i> Cell phone number for the associated person.
pager	<i>Census > People > Demographics</i> Pager number for the associated person.
email	<i>Census > People > Demographics</i> Email address for the associated person.
comments	<i>Census > People > Demographics</i> User-entered information on contact information.
number	<i>Census > People > Demographics</i> Street address house number (e.g. 123, 28345).
street	<i>Census > Address</i> Street name of address (e.g. Main, 7th, Fourth).
tag	<i>Census > Address</i> Postal tag for address (e.g. St., Ave., Blvd.).
prefix	<i>Census > Address</i> Direction if prior to the street name (e.g. E, W, NE) as in NE 7th St.
dir	<i>Census > Address</i> Direction if after the street name (e.g. E, W, NE) as in 7th St. NE.
apt	<i>Census > Address</i> Apartment number (e.g. 201, 3a).
city	<i>Census > Address</i> Postal city for the address.
state	<i>Census > Address</i> Two digit state code for the address.

zip	<i>Census > Address</i> Postal zip code (zip + 4 available).
county	<i>Census > Address</i> County in which this address resides.
addressLine1	Combination of first line address elements (street number, name , tag, etc.)
addressLine2	Combination of second line address elements (e.g. city, state, zip).
residentDistrictID	Internal database identifier.
residentDistrictNum	<i>Census > Address</i> State-defined district number for the student's resident district. Not used in all states.
residentDistrictType	<i>Census > Address</i> State-defined district number for the student's resident district. Not used in all states.
residentDistrictName	<i>Student Information > General > Enrollments</i> The name of the district student lives in.
addressID	Internal database identifier.
location_code	<i>Census > Address</i> District-defined code to identify address location.
tract	<i>Census > Address</i> Government-defined tract address is part of.
block	<i>Census > Address</i> Government-defined block address is located
privatePhone	<i>Census > Households</i> If flagged, checkbox indicates household phone number should not be part of third-party mailing lists.
privateAddress	<i>Census > Households > Addresses</i> If flagged, checkbox indicates address should not be part of third-party mailing lists.
modifiedDate	<i>Does not appear.</i> Date of last change.
<i>Mailing Addresses</i>	<i>Student > Census > Mailing Addresses</i>
districtID	Internal database identifier.
personID	Internal database identifier.

relatedBy	<p>System determination of contact/student relationship:</p> <ul style="list-style-type: none"> Household = The people are considered related because they share the same household. Relationship = The people are considered related because they have a relationship other than a shared household.
addressID	Internal database identifier.
householdID	Internal database identifier.
phone	<p><i>Census > Households</i></p> <p>Main home phone number to be reflected for all household members.</p>
householdName	<p><i>Census > Households</i></p> <p>Household name to follow the district-defined naming convention for households.</p>
startDate	<p><i>Census > Households > Households</i></p> <p>Indicates the first day the household is considered active.</p>
endDate	<p><i>Census > Households > Households</i></p> <p>Indicates the last day the household is considered active.</p>
number	<p><i>Census > Address</i></p> <p>Street address house number (e.g. 123, 28345, etc.)</p>
street	<p><i>Census > Address</i></p> <p>Street name of address (e.g. Main, 7th, Fourth, etc.)</p>
tag	<p><i>Census > Address</i></p> <p>Postal tag for address (e.g. St., Ave., Blvd., etc.).</p>
prefix	<p><i>Census > Address</i></p> <p>Direction if prior to the street name (e.g. E, W, NE) as in NE 7th St.</p>
dir	<p><i>Census > Address</i></p> <p>Direction listed after the street name (e.g. E, W, NE) as in 7th St. NE.</p>
apt	<p><i>Census > Address</i></p> <p>Apartment number (e.g. 201, 3a).</p>
city	<p><i>Census > Address</i></p> <p>Postal city for the address.</p>
state	<p><i>Census > Address</i></p> <p>Two digit state code for the address.</p>
zip	<p><i>Census > Address</i></p> <p>Postal zip code (zip + 4 available).</p>

county	<i>Census > Address</i> County in which this address exists.
postOfficeBox	<i>Census > Address</i> Flagged to indicate that this address is a PO box.
addressLine1	Combination of first line address elements (e.g. street number, name, tag)
addressLine2	Combination of second line address elements (e.g. city, state, zip).
guardianPersonID	Internal database identifier
guardianName	<i>Census > Relationships</i> Full name of a person flagged as a guardian on student's relationship tab.
guardianLastName	<i>Census > Relationships</i> Last name of a person flagged as a guardian on student's relationship tab.
guardianFirstName	<i>Census > Relationships</i> First name of a person flagged as a guardian on student's relationship tab.
guardianMiddleName	<i>Census > Relationships</i> Middle name of a person flagged as a guardian on student's relationship tab.
location_code	<i>Census > Address</i> District-defined code to identify address location.
tract	<i>Census > Address</i> Government-defined tract that includes this address.
block	<i>Census > Address</i> Government-defined block on which address exists.
secondary	<i>Census > Address > Households</i> Flagged to indicate address is a secondary address for the household.
addressDistrictID	Internal database identifier.
guardian	<i>Census > Address > Households</i> Indicates guardian relationship is flagged.
modifiedDate	<i>Does not appear.</i> Date of last change.
School Choice	<i>Student > Census > School Choice</i>
endYear	<i>System Administration > Calendar > School Years</i> The last year of the school year in yyyy format.
label	<i>System Administration > Calendar > School Years</i> The name of the school year.
startYear	<i>System Administration > Calendar > School Years</i> The first year of the school year in yyyy format.

applicationID	Internal database identifier.
calendarID	Internal database identifier.
calendarName	<i>System Administration > Calendar</i> The name of the calendar, generally reflective of the year and school it relates to (i.e. 07-08 Harrison High School).
schoolID	Internal database identifier.
name	<i>System Administration > School Choice > Rules</i> Name of the rule to be applied to incoming school choice applications.
personID	Internal database identifier.
applicationYearID	Internal database identifier.
applicationDate	<i>Census > People > School Choice</i> Date school choice application was received.
processedDate	<i>Census > People > School Choice</i> Date school choice application was reviewed by school.
approvalStatus	<i>Census > People > School Choice</i> Status of processed application (i.e. (APP)roved, (DEN)ied, (PEN)ding, (WAI)t-listed).
acceptedStatus	<i>Census > People > School Choice</i> Status of student's decision on whether or not to enroll when application has been approved by school (i.e. accepted, pending/ declined).
acceptedDate	<i>Census > People > School Choice</i> Date student made decision on whether or not to enroll in school.
gradeLevel	<i>Census > People > School Choice</i> The grade level student would be enrolled into if application is approved.
randomNumber	Random number assigned to application by system in the event a tiebreaker is necessary.
allowAccept	<i>Census > People > School Choice</i> If flagged, checkbox indicates that after application is approved, student acceptance is allowed via Portal.
priority	<i>Scheduling > Courses</i> The priority of the course as related to others courses in the scheduling process.
posted	<i>Census > People > School Choice</i> Indication that school choice application has posted.
overrideID	Internal database identifier.

lockApprovalStatus	<i>Census > People > School Choice</i> Indicates approval status is locked.
comments	<i>Census > People > School Choice</i> User-entered comments on school choice application.
ruleID	Internal database identifier.
code	<i>System Administration > School Choice > Rules</i> Code assigned to School Choice rule.
ruleName	<i>System Administration > School Choice > Rules</i> The name of the rule.
weight	<i>System Administration > School Choice > Rules</i> The weight assigned to applications in compliance with rule.
<i>Student Assignment Override</i>	<i>Student > Census > Student Assignment Overrides</i>
studentOverrideID	Internal database identifier.
personID	Internal database identifier.
calendarID	Internal database identifier.
overrideType	<i>Census > People > Overrides</i> Type of override assigned to student.
startDate	<i>Census > People > Overrides</i> First day override applies to student.
endDate	<i>Census > People > Overrides</i> Last day override applies to student.
modifiedDate	<i>Census > People > Overrides</i> Internal database identifier. Displays name of user who edited information.
modifiedByID	<i>Does not appear.</i> Lists the person who modified the information.
oldStartDate	<i>Census > People > Overrides</i> Original start date when multiple overrides exist.
oldEndDate	<i>Census > People > Overrides</i> Original end date when multiple overrides exist.

Student > Health

Filter Field	Mapping and Description
<i>Immunizations</i>	<i>Student > Health > Immunizations</i>

personID	Internal database identifier.
vaccineID	Internal database identifier.
certificateExpiration	<i>Student Information > Health > Immunizations</i> Date on which the immunization certificate expires.
certificateType	<i>Student Information > Health > Immunizations</i> Type of immunization certificate.
certificateDate	<i>Student Information > Health > Immunizations</i> Date on which the certificate took effect.
code	<i>Student Information > Health > Immunizations</i> Vaccine code as defined in System Administration > Health > Vaccines.
description	<i>Student Information > Health > Immunizations</i> Name of vaccine code as defined in System Administration > Health > Vaccines.
shotcount	<i>Student Information > Health > Immunizations</i> Default shot count as defined in System Administration > Health > Vaccines.
seq	<i>Student Information > Health > Immunizations</i> Sequence as defined in System Administration > Health > Vaccines.
dose1Date	<i>Student Information > Health > Immunizations</i> Dose date.
dose1Exempt	<i>Student Information > Health > Immunizations</i> Date of waiver exempting student from dose.
dose2Date	<i>Student Information > Health > Immunizations</i> Dose date.
dose2Exempt	<i>Student Information > Health > Immunizations</i> Date of waiver exempting student from dose.
dose3Date	<i>Student Information > Health > Immunizations</i> Dose date.
dose3Exempt	<i>Student Information > Health > Immunizations</i> Date of waiver exempting student from dose.
dose4Date	<i>Student Information > Health > Immunizations</i> Dose date.
dose4Exempt	<i>Student Information > Health > Immunizations</i> Date of waiver exempting student from dose.
dose5Date	<i>Student Information > Health > Immunizations</i> Dose date.

dose5Exempt	<i>Student Information > Health > Immunizations</i> Date of waiver exempting student from dose.
dose6Date	<i>Student Information > Health > Immunizations</i> Dose date.
dose6Exempt	<i>Student Information > Health > Immunizations</i> Date of waiver exempting student from dose.
Health Conditions	<i>Student > Health > Health Conditions</i>
personID	Internal database identifier.
conditionID	Internal database identifier.
conditionCode	<i>Student Information > Health > Conditions</i> Code of health condition, as defined in System Administration > Health > Health Condition List.
conditionCodeDesc	<i>Student Information > Health > Conditions</i> Description of health condition, as defined in System Administration > Health > Health Condition List.
conditionStart	<i>Student Information > Health > Conditions</i> Start date of health condition.
conditionEnd	<i>Student Information > Health > Conditions</i> End date of health condition.
conditionStatus	<i>Student Information > Health > Conditions</i> Status of health condition.
conditionComments	<i>Student Information > Health > Conditions</i> Comments on health condition.
displayFlag	<i>Student Information > Health > Conditions</i> Indicates whether a flag should be displayed for the health condition.
userWarning	<i>Student Information > Health > Conditions</i> Warning which appears when user hovers over condition flag.
instructions	<i>Student Information > Health > Conditions</i> Instructions which appear when user hovers over condition flag.
Treatment Detail	<i>Student > Health > Health Conditions > Treatment Detail</i>
conditionID	Internal database identifier.
treatmentID	Internal database identifier.
treatmentCode	<i>Student Information > Health > Conditions</i> Code of health treatment, as defined in System Administration > Health > Condition List.

treatmentCodeDesc	<i>Student Information > Health > Conditions</i> Description of treatment, as defined in System Administration > Health > Condition List.
treatmentStart	<i>Student Information > Health > Conditions</i> Start date of treatment, as defined in System Administration > Health > Treatment List.
treatmentEnd	<i>Student Information > Health > Conditions</i> End date of treatment.
treatmentStatus	<i>Student Information > Health > Conditions</i> Status of treatment.
treatmentComments	<i>Student Information > Health > Conditions</i> Comments on treatment.
Screenings	<i>Student > Health > Screenings</i>
screeningsID	Internal database identifier.
personID	Internal database identifier.
screeningType	<i>Student Information > Health > Screenings</i> Type of health screening.
screeningDate	<i>Student Information > Health > Screenings</i> Date of health screening.
comments	<i>Student Information > Health > Screenings</i> Comments on health screening.
scoliosisDate	<i>Student Information > Health > Screenings</i> Date of scoliosis health screening.
scoliosisCharacter	<i>Student Information > Health > Screenings</i> Code for the scoliosis character.
scoliosisType	<i>Student Information > Health > Screenings</i> Code associated with the scoliosis type.
earlyChildhoodLocation	<i>Student Information > Health > Screenings</i> Code for the provider of early childhood screening.
earlyChildhoodReadinessEval	<i>Student Information > Health > Screenings</i> Code from the Early Ed Experience field of early childhood screening.
earlyChildhoodReadinessReferral	<i>Student Information > Health > Screenings</i> Code from the Early Ed Referral field of early childhood screening.
earlyChildhoodHealthcare	<i>Student Information > Health > Screenings</i> Code from the Healthcare field of early childhood screening.

developmentalDate	<i>Student Information > Health > Screenings</i> Date of developmental screening.
developmentalStatus	<i>Student Information > Health > Screenings</i> Code for status of development screening.
developmentalTest	<i>Student Information > Health > Screenings</i> Code for test of developmental screening.
socialStatus	<i>Student Information > Health > Screenings</i> Code for the status of social/emotional screening.
physicalStatus	<i>Student Information > Health > Screenings</i> Code for the status of physical health screening.
tbDateGiven	<i>Student Information > Health > Screenings</i> Date the tuberculosis skin test screening occurred.
tbPlaceGiven	<i>Student Information > Health > Screenings</i> Code for the place where tuberculosis screening took place.
tbDateRead	<i>Student Information > Health > Screenings</i> Date of the tuberculosis skin test was analyzed.
tbResult	<i>Student Information > Health > Screenings</i> Value from tuberculosis Result MM field.
tbXRayDate	<i>Student Information > Health > Screenings</i> Date tuberculosis x-ray was taken.
tbStatus	<i>Student Information > Health > Screenings</i> Status of tuberculosis screening.
tbMedStartDate	<i>Student Information > Health > Screenings</i> Date of medication start for tuberculosis.
tbMedEndDate	<i>Student Information > Health > Screenings</i> Date of medication stop for tuberculosis.
tbRefusedDate	<i>Student Information > Health > Screenings</i> Date tuberculosis medication was refused.
hearingDate	<i>Student Information > Health > Screenings</i> Date of hearing screening.
hearingStatus	<i>Student Information > Health > Screenings</i> Status of hearing screening.
hearingType	<i>Student Information > Health > Screenings</i> Code for the type of hearing screening.
R250	<i>Student Information > Health > Screenings</i> Numeric value for hearing screening.

R500	<i>Student Information > Health > Screenings</i> Numeric value for hearing screening.
R1000	<i>Student Information > Health > Screenings</i> Numeric value for hearing screening.
R2000	<i>Student Information > Health > Screenings</i> Numeric value for hearing screening.
R4000	<i>Student Information > Health > Screenings</i> Numeric value for hearing screening.
R8000	<i>Student Information > Health > Screenings</i> Numeric value for hearing screening.
L250	<i>Student Information > Health > Screenings</i> Numeric value for hearing screening.
L500	<i>Student Information > Health > Screenings</i> Numeric value for hearing screening.
L1000	<i>Student Information > Health > Screenings</i> Numeric value for hearing screening.
L2000	<i>Student Information > Health > Screenings</i> Numeric value for hearing screening.
L4000	<i>Student Information > Health > Screenings</i> Numeric value for hearing screening.
L8000	<i>Student Information > Health > Screenings</i> Numeric value for hearing screening.
tympr	<i>Student Information > Health > Screenings</i> Code for Tympanometry R hearing screening.
tympl	<i>Student Information > Health > Screenings</i> Code for Tympanometry L hearing screening.
otoR	<i>Student Information > Health > Screenings</i> Code for Otoscopic R hearing screening.
otoL	<i>Student Information > Health > Screenings</i> Code for Otoscopic L hearing screening.
acoustic	<i>Student Information > Health > Screenings</i> Code for the Otoscopic Emissions hearing screening.
teenCheckupLocation	<i>Student Information > Health > Screenings</i> Code for the location of child or teen checkup.
teenCheckupStatus	<i>Student Information > Health > Screenings</i> Status of child or teen screening.

teenCheckupHealthcare	<i>Student Information > Health > Screenings</i> Code for healthcare option for child or teen screening.
teenCheckupExamDate	<i>Student Information > Health > Screenings</i> Date of child or teen screening.
teenCheckupType	<i>Student Information > Health > Screenings</i> Type of child or teen screening.
speechDate	<i>Student Information > Health > Screenings</i> Date of the speech screening.
speechTest	<i>Student Information > Health > Screenings</i> Code for the speech test.
speechStatus	<i>Student Information > Health > Screenings</i> Code for the status of speech screening.
growthDate	<i>Student Information > Health > Screenings</i> Date of the height/weight/vital signs screening.
growthStatus	<i>Student Information > Health > Screenings</i> Status of height/weight/vital signs screening.
growthHeight	<i>Student Information > Health > Screenings</i> Numeric value of height.
growthWeight	<i>Student Information > Health > Screenings</i> Numeric value of weight.
bloodPressure	<i>Student Information > Health > Screenings</i> Numeric value of blood pressure.
pulse	<i>Student Information > Health > Screenings</i> Numeric value pulse.
respiration	<i>Student Information > Health > Screenings</i> Numeric value of respiration.
BMI	<i>Student Information > Health > Screenings</i> Numeric value of BMI.
BMIPercentile	<i>Student Information > Health > Screenings</i> Percentile value of BMI.
visionReferralDate	<i>Student Information > Health > Screenings</i> Date vision screening was referred.
vistionDate	<i>Student Information > Health > Screenings</i> Date vision screening took place.
visionStatus	<i>Student Information > Health > Screenings</i> Code for the status of vision screening.

acuityR	<i>Student Information > Health > Screenings</i> Numeric value for vision screening.
acuityL	<i>Student Information > Health > Screenings</i> Numeric value for vision screening.
external	<i>Student Information > Health > Screenings</i> Code for the External Inspection field of vision screening.
corLens	<i>Student Information > Health > Screenings</i> Code for the Cor(rective) Lens field of vision screening.
coverTest	<i>Student Information > Health > Screenings</i> Code for the Cover Test field of vision screening.
colorVision	<i>Student Information > Health > Screenings</i> Code for the Color Vision field of vision screening.
corneal	<i>Student Information > Health > Screenings</i> Code for the Corneal Reflex field of vision screening.
visionTest	<i>Student Information > Health > Screenings</i> Code for the type of vision screening.
dentalSealants	<i>Student Information > Health > Screenings</i> Code for the Dental Sealants Present field of dental screening.
carieHistory	<i>Student Information > Health > Screenings</i> Code for the Caries History field of dental screening.
untreatedCaries	<i>Student Information > Health > Screenings</i> Code for the Untreated Caries field of dental screening.
stPathology	<i>Student Information > Health > Screenings</i> Code for the Soft Tissue Pathology field of dental screening.
malocclusion	<i>Student Information > Health > Screenings</i> Code for the Malocclusion field of dental screening.
dentalUrgent	<i>Student Information > Health > Screenings</i> Code for the Urgent Treatment field of dental screening.
dentalRestorative	<i>Student Information > Health > Screenings</i> Code for the Restorative Care field of dental screening.
dentalPreventative	<i>Student Information > Health > Screenings</i> Code for the Preventative Care field of dental screening.
dentalOther	<i>Student Information > Health > Screenings</i> Comments from the Dental Other field of dental screening.
dentalWaiverDate	<i>Student Information > Health > Screenings</i> Date dental waiver was granted.

dentalWaiverReason	<i>Student Information > Health > Screenings</i> Code for the Dental Waiver Reason.
dentalExamCompleted	<i>Student Information > Health > Screenings > Dental</i> Date the dental exam was completed.
religiousObjection	<i>Student Information > Health > Screenings > Dental</i> Religious objection to dental care.
nextDentalVisit	<i>Student Information > Health > Screenings > Dental</i> Date of the next dental visit.
proofOfAppointment	<i>Student Information > Health > Screenings > Dental</i> Type of proof used to verify next 6-month appointment.
dentalReferralDate	<i>Student Information > Health > Screenings > Dental</i> Date student was referred to dentist.
dentalTest	<i>Student Information > Health > Screenings > Dental</i> Type of dental test the student received.
Health Office Visits	<i>Student > Health > Health Office Visits</i>
visitID	Internal database identifier.
personID	Internal database identifier.
date	<i>Student Information > Health > Health Office Visits</i> Date of health office visit.
studentLastName	<i>Census > People > Demographics</i> Last name of student who visited the health office.
studentFirstName	<i>Census > People > Demographics</i> First name of student who visited the health office.
studentMiddleName	<i>Census > People > Demographics</i> Middle name of student who visited the health office.
studentFullName	<i>Census > People > Demographics</i> Full name of student who visited the health office.
staffLastName	<i>Student Information > Health > Health Office Visits</i> Last name of the health staff member who recorded the health office visit.
staffFirstName	<i>Student Information > Health > Health Office Visits</i> First name of the health staff member who recorded the health office visit.
staffFullName	<i>Student Information > Health > Health Office Visits</i> Full name of the health staff member who recorded the health office visit.

visitComments	<i>Student Information > Health > Health Office Visits</i> Comments attached to this particular visit.
complete	<i>Student Information > Health > Health Office Visits</i> Checkbox indicating if record is complete.
appointment	<i>Student Information > Health > Health Office Visits</i> Indication of whether the student attended the appointment or not.
complaintComments	<i>Student Information > Health > Health Office Visits</i> Comments related to the complaint.
complaintTypeName	<i>Student Information > Health > Health Office Visits</i> Identification name of student complaint.
observationID	Internal database identifier.
observationTypeID	Internal database identifier.
observationTypeName	<i>Student Information > Health > Health Office Visits</i> General name of observation for a complaint.
observationItemID	Internal database identifier.
observationItemName	<i>Student Information > Health > Health Office Visits</i> Specific name of student complaint.
interventionID	Internal database identifier.
interventionTypeID	Internal database identifier.
interventionTypeName	<i>Student Information > Health > Health Office Visits</i> General name of intervention for a complaint.
interventionItemID	Internal database identifier.
interventionItemName	<i>Student Information > Health > Health Office Visits</i> Specific name of intervention for a complaint.
dischargeID	Internal database identifier.
dischargeComments	<i>Student Information > Health > Health Office Visits</i> Comments associated with the student being discharged from the visit.
dischargeTypeName	<i>Student Information > Health > Health Office Visits</i> Name of discharge of visit.
dischargeTypeID	Internal database identifier.
Medcations	<i>Student > Health > Medications</i>
medicationID	Internal database identifier.
personID	Internal database identifier.

calendarID	Internal database identifier.
studentLastName	<i>Census > People > Demographics</i> Last name of student who requires medication.
studentFirstName	<i>Census > People > Demographics</i> First name of student who requires medication.
studentFullName	<i>Census > People > Demographics</i> Full name of student who required medication.
staffLastName	<i>Student Information > Health > Health Office Visits</i> Last name of the health staff member who recorded the medication record.
staffFirstName	<i>Student Information > Health > Health Office Visits</i> First name of the health staff member who recorded the medication record.
staffFullName	<i>Student Information > Health > Health Office Visits</i> Full name of the health staff member who recorded the medication record.
medName	<i>Student Information > Health > Medications</i> Name of Medication.
medForm	<i>Student Information > Health > Medications</i> Form in which the medication is given.
doseThreshold	<i>Student Information > Health > Medications</i> Total count of medication left before notice is sent to parent/guardian.
submittedDate	<i>Student Information > Health > Medications</i> Date the medication was submitted to the Health Office.
submittedDoses	<i>Student Information > Health > Medications</i> Number of doses the submitted medication contained.
rxDate	<i>Student Information > Health > Medications</i> Date prescription was filled.
rxNumber	<i>Student Information > Health > Medications</i> Prescription number.
remainingDoses	<i>Student Information > Health > Medications</i> The number of doses remaining from the original amount submitted.
directions	<i>Student Information > Health > Medications</i> Directions from the doctor on how to take medication.
comments	<i>Student Information > Health > Medications</i> Comments associated with the prescribed medicine.

<i>Contact Log</i>	<i>Student > Health > Contact Log</i>
logID	Internal database identifier.
personID	Internal database identifier.
districtID	Internal database identifier.
dateTimeStamp	<i>Student Information > Health > Contact Log</i> The date and time counselor contact was made.
text	<i>Student Information > Health > Contact Log</i> Any text comments associated with the contact record.
contactByID	<i>Student Information > Health > Contact Log</i> The individual who contacted the student.
module	<i>Student Information > Health > Contact Log</i> The contact module, in this case, Health.
contactType	<i>Student Information > Health > Contact Log</i> The individual who was contacted.
contactMode	<i>Student Information > Health > Contact Log</i> The method used to contact the student.
logGUID	Internal database identifier.

Student > Medicaid

Filter Field	Mapping and Definition
<i>Insurance Detail</i>	<i>Student > Medicaid > Insurance Detail</i>
insuranceID	Internal database identifier.
districtID	Internal database identifier.
personID	Internal database identifier.
startDate	<i>Student Information > Medicaid > Insurance</i> The point at which the insurance becomes effective.
endDate	<i>Student Information > Medicaid > Insurance</i> Date indicating when student is no longer covered by insurance.
type	<i>Student Information > Medicaid > Insurance</i> Type of insurance.
name	<i>System Administration > Medicaid > Insurance</i> Name of insurance provider.

address	System Administration > Medicaid > Insurance Street address of insurance provider.
city	<i>System Administration > Medicaid > Insurance</i> City of insurance provider address.
state	<i>System Administration > Medicaid > Insurance</i> State of insurance provider address.
zip	<i>System Administration > Medicaid > Insurance</i> Zip code of insurance provider address.
number	<i>Student Information > Medicaid > Insurance</i> Number attached to the insurance record.
policyGroupNumber	<i>Student Information > Medicaid > Insurance</i> Number of the group policy.
insuredPersonID	Internal database identifier.
insuredLastName	<i>Census > People > Demographics > Last Name</i> Last name of student.
insuredFirstName	<i>Census > People > Demographics > First Name</i> First name of student.
relationship	<i>Student information > Medicaid > Insurance</i> Indicates the relationship of the subscriber.
employersName	<i>Student Information > Medicaid > Insurance</i> Name of employer of insurance subscriber (student guardian).
verifiedDate	<i>Student Information > Medicaid > Insurance</i> Date on which start date and end date were verified.
releasedDate	<i>Student Insurance > Medicaid > Insurance</i> Date medical records were released to the insurance provider.
denialOfBillingDate	<i>Student Information > Medicaid > Insurance</i> Date on which billing was denied, which indicates private insurance.
comments	<i>Student Information > Medicaid > Insurance</i> Comments associated with the insurance record.
inactiveToday	<i>Does not appear.</i> Database indication of whether or not the medicaid insurance is effective.
expiredVerifiedDate	<i>Does not appear.</i> Database indication of whether or not the Verified Date has passed.
expiredReleaseDate	<i>Does not appear.</i> Database indication of whether or not Release Date has passed.

expiredDenialOfBillingDate	<i>Does not appear.</i> Database indication of whether or not Denial of Billing Date has passed.
<i>Service Log Detail</i>	<i>Student > Medicaid > Service Log Detail</i>
logID	Internal database identifier.
personID	Internal database identifier.
groupSize	<i>Does not appear.</i> Size of group being served.
serviceUnits	<i>Student Information > Medicaid > Service Log</i> Total measured units of service.
serviceDate	<i>Student Information > Medicaid > Service Log</i> Date of Medicaid service.
serviceStartTime	<i>Student Information > Medicaid > Service Log</i> Time Medicaid service begins.
serviceEndTime	<i>Student Information > Medicaid > Service Log</i> Time Medicaid service ends.
billNarrative	<i>Student Information > Medicaid > Service Log</i> Description of the bill.
comments	<i>Student Information > Medicaid > Service Log</i> Comments associated with the service.
modifiedByID	<i>Does not appear.</i> Lists the person who modified the information..
modifiedDate	<i>Student Information > Medicaid > Service Log</i> Date information was modified.
serviceID	<i>System Administration > Medicaid > Services > Medicaid Service Rate</i> The service to which the rate is attached.
serviceNumber	<i>System Administration > Medicaid > Services > Medicaid Service</i> Identifying number of service.
modifier1	<i>System Administration > Medicaid > Services > Medicaid Service</i> Explanation of service.
modifier2	<i>System Administration > Medicaid > Services > Medicaid Service</i> Explanation of service.
modifier3	<i>System Administration > Medicaid > Services > Medicaid Service</i> Explanation of service.
modifier4	<i>System Administration > Medicaid > Services > Medicaid Service</i> Explanation of service.

serviceName	<i>System Administration > Medicaid > Services > Medicaid Service</i> Name of service.
serviceLocation	<i>System Administration > Medicaid > Services > Medicaid Service</i> Location where service is provided.
group	<i>System Administration > Medicaid > Services > Medicaid Service</i> Group to which service belongs.
rateID	Internal database identifier.
effectiveDate	<i>System Administration > Medicaid > Services > Medicaid Service Rate</i> The state date of the rate.
unitQuantity	<i>System Administration > Medicaid > Services > Medicaid Service Rate</i> The number which defines the increment.
unitFrequency	<i>System Administration > Medicaid > Services > Medicaid Service Rate</i> The rate assessed per increment.
unitPrice	<i>System Administration > Medicaid > Services > Medicaid Service Rate</i> The increment in which the unit is measured.
totalCharges	<i>Does not appear.</i> Calculated total based on service rate.
providedID	Internal database identifier.
primaryProviderID	<i>Student Information > Medicaid > Services</i> The primary provider of insurance.
diagnosisCode	<i>Student Information > Medicaid > Services</i> The identifying code of the student diagnosis.
diagnosisDescription	<i>Student Information > Medicaid > Services</i> The description attached to the diagnosis code.
providerID	Internal database identifier.
providerPersonID	Internal database identifier.
providerName	<i>System Administration > Medicaid > Service Provider</i> Name of service provider.
agency	<i>System Administration > Medicaid > Service Provider</i> Agency which acts as a service provider.
address	<i>System Administration > Medicaid > Service Provider</i> Address of service provider.
city	<i>System Administration > Medicaid > Service Provider</i> City of service provider address.

state	<i>System Administration > Medicaid > Service Provider</i> State of service provider address.
zip	<i>System Administration > Medicaid > Service Provider</i> Zip code of service provider address.
phone	<i>System Administration > Medicaid > Service Provider</i> Phone of service provider address.
credentialNumber	<i>System Administration > Medicaid > Service Provider</i> National Provider ID.
credentialEarnedDate	<i>System Administration > Medicaid > Service Provider</i> Date provider credential is earned.
credentialExpireDate	<i>System Administration > Medicaid > Service Provider</i> Date provider credential will expire.
planServiceProvidedID	<i>Student Information > Medicaid > Services</i> The learner or health plan services associated with this service.
serviceStartDate	<i>Student Information > Medicaid > Service Log</i> Date the medicaid service began.
serviceEndDate	<i>Student Information > Medicaid > Service Log</i> Date the medicaid service ended.
planServiceName	<i>Student Information > Medicaid > Service Log</i> Service provided for this entry.
serviceDirect	<i>Student Information > Medicaid > Service Log</i> Number of minutes of direct service.
serviceIndirect	<i>Student Information > Medicaid > Service Log</i> Number of minutes of indirect service.
serviceFrequency	<i>Student Information > Medicaid > Service Log</i> Frequency at which service was provided.
serviceFreqPeriod	<i>Student Information > Medicaid > Service Log</i> Length of time over which service was provided at given frequency.
evalID	<i>Student Information > Medicaid > Services</i> The evaluation attached to this particular service.
evalDate	<i>Student Information > Medicaid > Service Log</i> Date that evaluation was completed.
billID	Internal database identifier.
locationID	Internal database identifier.

location	<i>Student Information > Medicaid > Service Log</i> Location service was provided, usually school.
supervisorID	Internal database identifier.
supervisorName	<i>Student Information > Medicaid > Service Log</i> Supervisor of medicaid transaction.
omitBilling	<i>Student Information > Medicaid > Service Log</i> Indication that service was not billed.
omitReason	<i>Does not appear.</i> Reason service was omitted from billing.
transportationStart	<i>Student Information > Medicaid > Service Log</i> Time transportation service begins.
transportationEnd	<i>Student Information > Medicaid > Service Log</i> Time transportation services ends.
transportationMiles	<i>Student Information > Medicaid > Service Log</i> Number of miles student is transported.
billingStatus	<i>Student Information > Medicaid > Service Log</i> Comments on the progress of the medicaid bill.
noBillReason	<i>Student Information > Medicaid > Service Log</i> (Field only appears when the Omit From Billing checkbox is marked.) Comments from the Omit Reason textbox that explain why a bill was not issued for Medicaid services performed.

Student > Behavior

Filter Field	Mapping and Definition
<i>Behavior Event Detail</i>	<i>Student > Behavior > Behavior Event Detail</i>
personID	Internal database identifier.
calendarID	Internal database identifier.
roleID	Internal database identifier.
eventID	Internal database identifier.
role	<i>Student Information > General > Behavior</i> Student's participation level in behavior incident: offender, participant, victim or witness.
roleBIE	<i>Student Information > General > Behavior</i> Role name specific to BIE sites.

demerits	<i>Student Information > General > Behavior</i> Number of demerits assigned to student when behavior event is saved.
roleComments	<i>Student Information > General > Behavior</i> Comments on the individual's behavior role within the behavior event.
physicalInjury	<i>Student Information > General > Behavior</i> Indicates that the behavior event resulted in physical injury. Does not appear in all states. Field deprecated as of the E.1134 Release Pack and now appears with a <u>_dep</u> suffix.
bodilyInjury	<i>Student Information > General > Behavior</i> Indicates that the behavior event resulted in serious bodily injury. Does not appear in all states. Field deprecated as of the E.1134 Release Pack and now appears with a <u>_dep</u> suffix.
injuryDescription	<i>Student Information > General > Behavior</i> Description of injury related to event. Does not appear in all states.
cost	<i>Student Information > General > Behavior</i> Cost incurred by the injury. Does not appear in all states. Field deprecated as of the E.1134 Release Pack and now appears with a <u>_dep</u> suffix.
relationshipToSchool	<i>Student Information > General > Behavior</i> Relationship of offender in relation to the school. Does not appear in all states.
otherRelationship	<i>Student Information > General > Behavior</i> Other relationships connected to the event. Does not appear in all states.
overridePersonID	<i>Student Information > General > Behavior</i> PersonID as indicated by the behavior role editor. Does not appear in all states.
overrideFirstName	<i>Student Information > General > Behavior</i> First name as indicated by the behavior role editor. Does not appear in all states.
overrideMiddleName	<i>Student Information > General > Behavior</i> Middle name as indicated by the behavior role editor. Does not appear in all states.
overrideLastName	<i>Student Information > General > Behavior</i> Last name as indicated by the behavior role editor. Does not appear in all states.
overrideSuffix	<i>Student Information > General > Behavior</i> Suffix as indicated by the behavior role editor. Does not appear in all states.

overrideGender	<i>Student Information > General > Behavior</i> Gender as indicated by the behavior role editor. Does not appear in all states.
overrideBirthdate	<i>Student Information > General > Behavior</i> Birthdate as indicated by the behavior role editor. Does not appear in all states.
violationLevel1	<i>Student Information > General > Behavior</i> Indication of what the behavior event was related to (such as illicit drug). Does not appear in all states.
violationLevel2	<i>Student Information > General > Behavior</i> Indication of offense (such as possession). Does not appear in all states.
violationLevel3	<i>Student Information > General > Behavior</i> Specific type of drug involved in the event. Does not appear in all states.
employmentType	<i>Student Information > General > Behavior</i> Employment type of the involved individual as indicated by behavior role editor. Does not appear in all states.
overridePhysicalInjury	<i>Student Information > General > Behavior</i> Non-student relationship physical injury.
overrideBodilyInjury	<i>Student Information > General > Behavior</i> Non-student relationship serious bodily injury.
overrideRole	<i>Student Information > General > Behavior</i> Non-student role in behavior event.
eventName	<i>Student Information > General > Behavior</i> Type of behavior event as defined in System Administration > Behavior > Event Types.
code	<i>Student Information > General > Behavior</i> Code attached to the behavior event.
eventName2 eventName3 eventName4 eventName5	<i>Student Information > General > Behavior</i> Type of additional behavior event as defined in System Administration > Behavior > Event Types.
code2 code3 code4 code5	<i>Student Information > General > Behavior</i> Code attached to the additional behavior event.
eventCodeBIE	<i>Student Information > General > Behavior</i> Event code specific to BIE sites.

eventNameBIE	<i>Student Information > General > Behavior</i> Event name specific to BIE sites.
weaponCode	<i>Student Information > General > Behavior</i> Code for weapon involved in behavior event, as defined in System Administration > Attribute Dictionary > Behavior > Behavior Event Weapon.
weaponCodeBIE	<i>Student Information > General > Behavior</i> Weapon code specific to BIE sites.
weaponBIE	<i>Student Information > General > Behavior</i> Weapon name specific to BIE sites.
violenceIndicator	<i>Student Information > General > Behavior</i> Indicates whether the Violence Indicator checkbox was flagged for behavior event.
timestamp	<i>Student Information > General > Behavior</i> Auto-inserted Date and Time behavior event is logged. Date and Time may be edited separately.
eventDate	<i>Student Information > General > Behavior</i> The date behavior event took place.
staffName	<i>Student Information > General > Behavior</i> Name of staff member reporting behavior event.
referralName	<i>Student Information > General > Behavior</i> Name of staff member behavior to whom the event is referred.
behaviorComments	<i>Student Information > General > Behavior</i> Comments on the behavior event.
context	<i>Student Information > General > Behavior</i> Context of event, as specified in the Other Firearm or Weapon field. Not available in all states.
victim	<i>Student Information > General > Behavior</i> If flagged, checkbox indicates the event included Serious Bodily Injury to the victim. Not available in all states.
numOfStuVictims	<i>Student Information > General > Behavior</i> Total number of student victims involved in the event. Only used in some states.
damages	<i>Student Information > General > Behavior</i> Indicates total damages incurred by incident. Only used in some states.
offenderType	<i>Student Information > General > Behavior</i> Participant type.

policeNotified	<i>Student Information > General > Behavior</i> Indicates whether police have been notified of behavior event. Not available in all states.
gangRelated	<i>Student Information > General > Behavior</i> Indicates whether behavior event is gang-related. Not available in all states.
hateCrime	<i>Student Information > General > Behavior</i> Indicates whether the behavior event was a hate crime. Not available in all states.
alcoholRelated	<i>Student Information > General > Behavior</i> Indicates whether the behavior event was alcohol-related. Not available in all states.
drugsRelated	<i>Student Information > General > Behavior</i> Indicates whether the behavior event was drug-related. Not available in all states.
drugCode	<i>Student Information > General > Behavior</i> Code indicating type of drug offense. Not available in all states.
fightRelated	<i>Student Information > General > Behavior</i> Indicates whether the behavior event was fight-related. Not available in all states.
seHearing	<i>Student Information > General > Behavior</i> Indicates whether a hearing resulted from the behavior event. Not available in all states. Field deprecated as of the E.1134 Release Pack and now appears with a <u>_dep</u> suffix.
location	<i>Student Information > General > Behavior</i> Code and corresponding name of behavior event location. Not available in all states.
locationBIE	<i>Student Information > General > Behavior</i> Event location name specific to BIE sites.
stateEventCode	<i>Student Information > General > Behavior</i> State-defined behavior code this event maps to. Not available in all states.
stateEventName	<i>Student Information > General > Behavior</i> State-defined behavior name this district defined name maps to. Not available in all states.
regionalEventCode	<i>Student Information > General > Behavior</i> Used by federal entities to map across state behavior codes. Not available in all states.

regionalEventName	<i>Student Information > General > Behavior</i> Used by federal entities to map across state behavior names. Not available in all states.
policeReport	<i>Student Information > General > Behavior</i> Police report number attached to this event. Not available in all states.
hearingStatus	<i>Student Information > General > Behavior</i> Date of scheduled hearing. Not available in all states. Field deprecated as of the E.1134 Release Pack and now appears with a <u>_dep</u> suffix.
injury	<i>Student Information > General > Behavior</i> Indicates if the student involved in the event were injured.
resolutionID	Internal database identifier.
resolutionName	<i>Student Information > General > Behavior</i> Name of Behavior Resolution selected, as defined in System Administration > Behavior > Resolution Types.
resolutionCode	<i>Student Information > General > Behavior</i> Code associated to behavior resolution.
resolutionCodeBIE	<i>Student Information > General > Behavior</i> Code associated to behavior resolution that is specific to BIE sites.
resolutionNameBIE	<i>Student Information > General > Behavior</i> Name of behavior resolution selected that is specific to BIE sites.
removalReason	<i>Student Information > General > Behavior</i> Reason for removal. Not available in all states.
expulsionCode	<i>Student Information > General > Behavior</i> Code for expulsion. Not available in all states. Field deprecated as of the E.1134 Release Pack and now appears with a <u>_dep</u> suffix.
expulsionServiceProvided	<i>Student Information > General > Behavior</i> Service provided for expelled student. Not available in all states. Field deprecated as of the E.1134 Release Pack and now appears with a <u>_dep</u> suffix.
auxiliaryCode	<i>Student Information > General > Behavior</i> Code for auxiliary purpose. Not available in all states.
altPlacement	<i>Student Information > General > Behavior</i> Alternate placement indicator. Not available in all states. Field deprecated as of the E.1134 Release Pack and now appears with a <u>_dep</u> suffix.

altPlacementSped	<i>Student Information > General > Behavior</i> Special education placement indicator. Not available in all states.
lawEnforcement	<i>Student Information > General > Behavior</i> Indicates law enforcement involvement. Not available in all states.
resolutionStartTimestamp	<i>Student Information > General > Behavior</i> The Date and Time resolution was assigned (auto-inserted). Can be edited separately for behavior resolution.
resolutionStartDate	<i>Student Information > General > Behavior</i> Start Date of behavior resolution.
resolutionEndDate	<i>Student Information > General > Behavior</i> End Date of behavior resolution.
resolutionEndTimeStamp	<i>Student Information > General > Behavior</i> The Date and Time resolution was completed (auto-inserted). Can be edited separately for behavior resolution.
resolutionLength	<i>Student Information > General > Behavior</i> Calculated number of days between resolutionStartTimestamp and resolutionEndDate.
resolutionLengthSchoolDays	<i>Student Information > General > Behavior</i> Calculated number of school days between resolutionStartTimestamp and resolutionEndDate.
resolutionComments	<i>Student Information > General > Behavior</i> Comments on behavior resolution.
resolutionSchoolDaysDuration	<i>Student Information > General > Behavior</i> School day duration for behavior resolution. Not available in all states.
stateResCode	<i>System Administration > General > Behavior > Resolution Types</i> State-defined resolution code.
stateResName	<i>System Administration > General > Behavior > Resolution Types</i> The district-defined name assigned to the state code for mapping.
regionalResCode	<i>System Administration > General > Behavior > Resolution Types</i> The Resolution Code Mapping. Not available in all states.
regionalResName	<i>Student Information > General > Behavior > Resolution</i> Residential Name used in BIE Schools to indicate where the behavior resolution will occur.
boardViolation	<i>Student Information > General > Behavior</i> Classifies behavior event as specific type of school violation.
lawViolation	<i>Student Information > General > Behavior</i> Classifies behavior event as specific type of legal violation.

unsafeSchoolChoiceEvent	<i>Student Information > General > Behavior > Behavior Event</i> The offense leading to the removal by suspension or expulsion classifying school as “Unsafe.” Not available in all states.
medicalTreatmentProvided	<i>Student Information > General > Behavior</i> Indicates that medical treatment was provided as a result of behavior event. Not available in all states.
nonStudentVictim1Desc nonStudentVictim2Desc nonStudentVictim3Desc	<i>Student Information > General > Behavior</i> Description of non-student behavior event victims.
oalDetermination	<i>Student Information > General > Behavior > Resolution</i> Indicates the violation was filed with the Office of Administration Law. Not available in all states.
transferOption	<i>Student Information > General > Behavior > Resolution</i> Indicates the option to transfer the student based on the behavior event entered.
transferOutcome	<i>Student Information > General > Behavior > Resolution</i> Outcome of the entered transfer option.
actLength	<i>Student Information > General > Behavior > Resolution</i> Length of behavior resolution. Not available in all states. Field deprecated as of the E.1134 Release Pack and now appears with a _dep suffix.
durationReason	<i>Student Information > General > Behavior > Resolution</i> Explanation of the reason the resolution spans as many days as it does. Not available in all states. Field deprecated as of the E.1134 Release Pack and now appears with a _dep suffix.
discAssignDate	<i>Student Information > General > Behavior > Resolution</i> Date the resolution was assigned to the student.
CampusIDofAssignment	<i>Does not appear.</i> School number associated with student’s district assignment
CampusIDofResponsibility	<i>Does not appear.</i> School number associated with district responsible for student.
timeClassifier	<i>Does not appear.</i> Classifies the time of day in which the event happened. Part of the time field. Field deprecated as of the E.1134 Release Pack and now appears with a _dep suffix.

timeDescription	<p>Does not appear.</p> <p>Description of time of event.</p> <p>Field deprecated as of the E.1134 Release Pack and now appears with a _dep suffix.</p>
locationClassifier	<p>Student Information > General > Behavior</p> <p>Classification used to identify behavior locations. Not available in all states.</p> <p>Field deprecated as of the E.1134 Release Pack and now appears with a _dep suffix.</p>
locationDescription	<p>Student Information > General > Behavior</p> <p>Indicates where the event occurred. Not available in all states.</p>
incidentType	<p>Student Information > General > Behavior</p> <p>Indicates the type of incident that occurred. Not available in all states.</p>
incidentDescription	<p>Student Information > General > Behavior</p> <p>Lists the details of the incident. Not available in all states.</p>
gFSAModification	<p>Student Information > General > Behavior > Resolution</p> <p>Entered as part of the Gun Free Schools Act. Selected if resolution was in an effort to enforce the gFSA requirements. Not available in all states.</p> <p>Field deprecated as of the E.1134 Release Pack and now appears with a _dep suffix.</p>
disabilityManifest	<p>Student Information > General > Behavior > Resolution</p> <p>Used to determine if the resolution is part of disability tracking. Not available in all states.</p>
zeroTolerance	<p>Student Information > General > Behavior > Resolution</p> <p>Selected if school uses the zero tolerance policy for behavior. Not available in all states.</p>
motivationCode	<p>Student Information > General > Behavior > Resolution</p> <p>Code assigned to the student's motivation for committing the event. Not available in all states.</p>
daysOverride	<p>Student Information > General > Behavior > Resolution</p> <p>The amount of days the student is participating in the resolution.</p> <p>Field deprecated as of the E.1134 Release Pack and now appears with a _dep suffix.</p>

Student > Attendance

Filter Field	Mapping and Definition
--------------	------------------------

<i>Period Mark Detail</i>	<i>Student > Attendance > Period Mark Detail</i> This section contains elements related to attendance marks, including the excuse code details listing the section and term/period in which the attendance mark occurred. Elements from this section will pull from all marks, including Exempt.
personID	Internal database identifier.
calendarID	Internal database identifier.
structureID	Internal database identifier.
termID	Internal database identifier.
termName	<i>System Administration > Calendar > Terms</i> The name of term.
termSeq	<i>System Administration > Calendar > Terms</i> The sequence of term within school year.
periodID	Internal database identifier.
periodName	<i>System Administration > Calendar > Periods</i> District or school-defined name for this period (e.g. HR, 01, 02, ASA).
periodSeq	<i>System Administration > Calendar > Periods</i> The period sequence used for sorting the list of periods throughout Campus.
nonInstructional	<i>System Administration > Calendar > Periods</i> If flagged, checkbox indicates period is not recognized by the state as an instructional period.
scheduleName	<i>System Administration > Calendar > Schedule Structure</i> District or school-defined name for this period schedule. Generally one period schedule is used unless the school requires rotating days (e.g. Main, MWF, TT).
scheduleSeq	<i>System Administration > Calendar > Period</i> The period schedule sequence is used for sorting purposes throughout the product.
courseNumber	<i>Scheduling > Courses</i> Course number.
sectionID	Internal database identifier.
sectionNumber	<i>Student Information > General > Attendance</i> The section number for instance of course.
courseName	<i>Student Information > General > Attendance</i> Course name.

date	<i>Student Information > General > Attendance</i> Refers to the Date the attendance event occurred. Dates in Student Attendance appear in mm/dd/yyyy format, along with the day of the week.
status	<i>Student Information > General > Attendance</i> Represents the type of absent for the associated event. A = Absent, T = Tardy, E = Early Release.
excuse	<i>Student Information > General > Attendance</i> Indicates the absent as being Unknown, Excused, Unexcused or Exempt.
code	<i>Student Information > General > Attendance</i> Displays the code associated with a student's attendance event. This code is displayed in the teacher's attendance view, and is edited by attendance clerks.
stateCode	<i>Student Information > General > Attendance</i> State-defined attendance code associated with this district-defined attendance code.
description	<i>Student Information > General > Attendance</i> Displays any comments entered by the teacher or attendance office related to the attendance event.
presentMinutes	<i>Student Information > General > Attendance</i> Calculation of total time during the period when the student was in attendance. This number is based on the time student was marked absent to present, or present to absent.
comments	<i>Student Information > General > Attendance</i> Notes any reason for absent provided to the attendance office, either by the teacher or the guardian.
<i>Period Mark Count</i>	<i>Student > Attendance > Period Mark Count</i> This section contains elements that count total period absences broken down by Excused or Unexcused. Elements in this section also count tardies grouped by student, term and period.
personID	Internal database identifier.
calendarID	Internal database identifier.
structureID	Internal database identifier.
termID	Internal database identifier.
termName	<i>System Administration > Calendar > Terms</i> District or school-defined name for this term within this termSchedule (e.g. Quarter 1, Q1, Semester 1, S1).
termSeq	<i>System Administration > Calendar > Terms</i> The sequence on the term used for sort ordering throughout Campus.

periodID	Internal database identifier.
periodName	<i>System Administration > Calendar > Periods</i> District or school-defined name for this period (e.g. HR, 01, 02, ASA).
periodSeq	<i>System Administration > Calendar > Periods</i> The period sequence used for sorting the list of periods throughout Campus.
scheduleName	<i>System Administration > Calendar > Schedule Structure</i> District or school-defined name for this period schedule. Generally a one-period schedule is used unless the school requires rotating days (e.g. Main, MWF, TT).
scheduleSeq	<i>System Administration > Calendar > Schedule Structure</i> The period schedule sequence is used for sorting purposes throughout Campus.
periodAbsences	<i>Student Information > General > Attendance</i> The total number of absences for a period and term.
absencesExcused	<i>Student Information > General > Attendance</i> The total number of excused absences for a period and term.
absencesUnexcused	<i>Student Information > General > Attendance</i> Total number of student's unexcused absences for a period and term.
tardies	<i>Student Information > General > Attendance</i> Total number of occasions a student was considered tardy for a period and term.
Term Mark Count	<i>Student > Attendance > Term Mark Count</i> This section contains elements that count the total period absences broken down by Excused and Unexcused. Elements from this section also count the tardies grouped by student and term.
personID	Internal database identifier.
calendarID	Internal database identifier.
name	<i>System Administration > Calendar > Terms</i> District or school-defined name for this term within this term's schedule (e.g. Quarter 1, Q1, Semester 1, S1).
termID	Internal database identifier.
termName	<i>System Administration > Calendar > Terms</i> District or school-defined name for this term within this term's schedule (e.g. Quarter 1, Q1, Semester 1, S1).
termSeq	<i>System Administration > Calendar > Terms</i> The sequence on the term used for sort ordering throughout Campus.
periodAbsences	<i>Student Information > General > Attendance</i> Total number of absences for a term.

absencesExcused	<i>Student Information > General > Attendance</i> Total number of excused absences for a term.
absencesUnexcused	<i>Student Information > General > Attendance</i> Total number of student's unexcused absences for a term.
tardies	<i>Student Information > General > Attendance</i> Total number of occasions a student was considered tardy for a term.
<i>Course Mark Count</i>	<i>Student > Attendance > Course Mark Count</i> This section contains elements that count the total period absences broken down by Excused and Unexcused. Elements within this section also count tardies grouped by student, term and section.
personID	Internal database identifier.
calendarID	Internal database identifier.
structureID	Internal database identifier.
termID	Internal database identifier.
termName	<i>System Administration > Calendar > Terms</i> District or school-defined name for this term within this term's schedule (e.g. Quarter 1, Q1, Semester 1, S1).
termSeq	<i>System Administration > Calendar > Terms</i> The sequence on the term as used for sorting within Campus.
courseID	Internal database identifier.
courseNumber	<i>Scheduling > Courses > Course</i> Course number.
courseName	<i>Scheduling > Courses > Course</i> Course name.
courseAbsences	<i>Student Information > General > Attendance</i> Total number of absences for a course and term.
periodAbsences	<i>Student Information > General > Attendance</i> Total number of periods absent for a course and term. This may differ from courseAbsences if a course meets more than one period.
absencesExcused	<i>Student Information > General > Attendance</i> Total number of excused absences for a course and term.
tardies	<i>Student Information > General > Attendance</i> The total number of occasions a student was considered tardy.

<i>Section Mark Count</i>	<i>Student > Attendance > Section Mark Count</i> This section contains elements that count the total period absences broken down by Excused and Unexcused. Elements in this section also count the tardies grouped by student, term and section.
personID	Internal database identifier.
calendarID	Internal database identifier.
structureID	Internal database identifier.
termID	Internal database identifier.
termName	<i>System Administration > Calendar > Terms</i> District or school-defined name for this term within this term's schedule (e.g. Quarter 1, Q1, Semester 1, S1).
termSeq	<i>System Administration > Calendar > Terms</i> The sequence on the term used for sorting within Campus.
sectionID	Internal database identifier.
courseNumber	<i>Scheduling > Courses > Course</i> Course number.
sectionNumber	<i>Scheduling > Courses > Section</i> Section number for instance of course.
courseName	<i>Scheduling > Courses > Course</i> Course name.
sectionAbsences	<i>Student Information > General > Attendance</i> Total number of absences for a section and term.
periodAbsences	<i>Student Information > General > Attendance</i> Total number of periods absent for a section and term. This may be different from the courseAbsences if a section meets for more than one period.
absencesExcused	<i>Student Information > Attendance</i> Total number of excused absences for a section and term.
absencesUnexcused	<i>Student Information > General > Attendance</i> Total number of student's unexcused absences for a period and term.
tardies	<i>Student Information > General > Attendance</i> The total number of occasions a student was considered tardy for a term and section.
<i>Term Summary</i>	<i>Student > Attendance > Term Summary</i> This section contains elements that summarize the total period absences broken down by Excused, Unexcused and Tardy. Results are flattened to a four-term structure.

personID	Internal database identifier.
calendarID	Internal database identifier.
structureID	Internal database identifier.
term1PeriodAbsences	<i>Reporting element only</i> The number of periods absent for Term 1.
term1AbsencesExcused	<i>Reporting element only</i> Number of excused periods absent for Term 1.
term1AbsencesUnexcused	<i>Reporting element only</i> Number of unexcused periods absent for Term 1.
term1Tardies	<i>Reporting element only</i> Number of tardies for Term 1.
term2PeriodAbsences	<i>Reporting element only</i> The number of periods absent for Term 2.
term2AbsencesExcused	<i>Reporting element only</i> Number of excused periods absent for Term 2.
term2AbsencesUnexcused	<i>Reporting element only</i> Number of unexcused periods absent for Term 2.
term2Tardies	<i>Reporting element only</i> Number of tardies for Term 2.
term3PeriodAbsences	<i>Reporting element only</i> The number of periods absent for Term 3.
term3AbsencesExcused	<i>Reporting element only</i> Number of excused periods absent for Term 3.
term3AbsencesUnexcused	<i>Reporting element only</i> Number of unexcused periods absent for Term 3.
term3Tardies	<i>Reporting element only</i> Number of tardies for Term 3.
term4PeriodAbsences	<i>Reporting element only</i> The number of periods absent for Term 4.
term4AbsencesExcused	<i>Reporting element only</i> Number of excused periods absent for Term 4.
term4AbsencesUnexcused	<i>Reporting element only</i> Number of unexcused periods absent for Term 4.
term4Tardies	<i>Reporting element only</i> Number of tardies for Term 4.

Course Term Summary	<i>Student > Attendance > Course Term Summary</i> This section contains elements that summarize the total period absences broken down by Excused, Unexcused and Tardy. Results are flattened to a four-term structure with one row per course.
personID	Internal database identifier.
calendarID	Internal database identifier.
structureID	Internal database identifier.
courseID	Internal database identifier.
courseNumber	<i>Scheduling > Courses > Course</i> Course number.
courseName	<i>Scheduling > Courses > Course</i> Course name.
term1PeriodAbsences	<i>Reporting element only</i> The number of periods absent for course in Term 1.
term1AbsencesExcused	<i>Reporting element only</i> Number of excused periods absent for course in Term 1.
term1AbsencesUnexcused	<i>Reporting element only</i> Number of unexcused periods absent for course in Term 1.
term1Tardies	<i>Reporting element only</i> Number of tardies for course in Term 1.
term2PeriodAbsences	<i>Reporting element only</i> The number of periods absent for course in Term 2.
term2AbsencesExcused	<i>Reporting element only</i> Number of excused periods absent for course in Term 2.
term2AbsencesUnexcused	<i>Reporting element only</i> Number of unexcused periods absent for course in Term 2.
term2Tardies	<i>Reporting element only</i> Number of tardies for course in Term 2.
term3PeriodAbsences	<i>Reporting element only</i> The number of periods absent for course in Term 3.
term3AbsencesExcused	<i>Reporting element only</i> Number of excused periods absent for course in Term 3.
term3AbsencesUnexcused	<i>Reporting element only</i> Number of unexcused periods absent for course in Term 3.

term3Tardies	<i>Reporting element only</i> Number of tardies for course in Term 3.
term4PeriodAbsences	<i>Reporting element only</i> The number of periods absent for course in Term 4.
term4AbsencesExcused	<i>Reporting element only</i> Number of excused periods absent for course in Term 4.
term4AbsencesUnexcused	<i>Reporting element only</i> Number of unexcused periods absent for course in Term 4.
term4Tardies	<i>Reporting element only</i> Number of tardies for course in Term 4.
Section Term Summary	<i>Student > Learner > Section Term Summary</i> This section contains elements that summarize total period absences broken down by Excused, Unexcused and Tardy. Results are flattened to a four-term structure with one row per section.
personID	Internal database identifier.
calendarID	Internal database identifier.
structureID	Internal database identifier.
courseID	Internal database identifier.
courseNumber	<i>Scheduling > Courses > Course</i> Course number.
sectionNumber	<i>Scheduling > Courses > Section</i> Section number for instance of course.
courseName	<i>Scheduling > Courses > Course</i> Course name.
term1PeriodAbsences	<i>Reporting element only</i> The number of periods absent for section in Term 1.
term1AbsencesExcused	<i>Reporting element only</i> Number of excused periods absent for section in Term 1.
term1AbsencesUnexcused	<i>Reporting element only</i> Number of unexcused periods absent for section in Term 1.
term1Tardies	<i>Reporting element only</i> Number of tardies for section in Term 1.
term2PeriodAbsences	<i>Reporting element only</i> The number of periods absent for section in Term 2.

term2AbsencesExcused	<i>Reporting element only</i> Number of excused periods absent for section in Term2.
term2AbsencesUnexcused	<i>Reporting element only</i> Number of unexcused periods absent for section in Term 2.
term2Tardies	<i>Reporting element only</i> Number of tardies for section in Term 2.
term3PeriodAbsences	<i>Reporting element only</i> The number of periods absent for section in Term 3.
term3AbsencesExcused	<i>Reporting element only</i> Number of excused periods absent for section in Term 3.
term3AbsencesUnexcused	<i>Reporting element only</i> Number of unexcused periods absent for section in Term 3.
term3Tardies	<i>Reporting element only</i> Number of tardies for section in Term 3.
term4PeriodAbsences	<i>Reporting element only</i> The number of periods absent for section in Term 4.
term4AbsencesExcused	<i>Reporting element only</i> Number of excused periods absent for section in Term 4.
term4AbsencesUnexcused	<i>Reporting element only</i> Number of unexcused periods absent for section in Term 4.
term4Tardies	<i>Reporting element only</i> Number of tardies for section in Term 4.
Daily Approx Detail	<p><i>Student > Attendance > Daily Approx Detail</i></p> <p>This section uses the minutes from the calendar's wholeDayAbsence and halfDayAbsence elements to approximate daily absences. Results are the sum of the absent minutes and the daily absences (i.e. 0.0, 0.5, 1.0) for each day.</p> <p>This section is not relevant in all states.</p>
personID	Internal database identifier.
calendarID	Internal database identifier.
date	<i>Student Information > General > Attendance</i> The date of the selected attendance record.
termID	Internal database identifier.
termName	<i>System Administration > Calendar > Terms</i> District or school-defined name for this term within this term's schedule (e.g. Quarter 1, Q1, Semester 1, S1).

termSeq	<i>System Administration > Calendar > Terms</i> The sequence on the term used for sorting within Campus.
scheduleName	<i>System Administration > Calendar > Schedule Structure</i> District or school-defined name for this period schedule. Generally a one-period schedule is used unless the school requires rotating days (e.g. Main, MWF, TT).
scheduleSeq	<i>System Administration > Calendar > Schedule Structure</i> Used for sorting within Campus.
absentMinutes	<i>Student Information > General > Attendance</i> Calculated by the number of minutes in a period minus the number of minutes recorded as "present." Summarized per day.
absentDays	<i>Student Information > General > Attendance</i> Total number of days student is considered absent, rounded to a whole or half-day.
tardies	<i>Student Information > General > Attendance</i> Total number of occasions a student was considered tardy on a particular date.
unexcused	<i>Student Information > General > Attendance</i> Number of periods a student is marked Absent: Unexcused or Absent: Unknown on a particular date.
<i>Daily Approx Term Count</i>	<i>Student > Attendance > Daily Approx Term Count</i> This section uses the minutes from the calendar's wholeDayAbsence and halfDayAbsence to approximate daily absences. Results are the sum of the whole-day and half-day absences per term. This section is not relevant in all states.
personID	Internal database identifier.
calendarID	Internal database identifier.
structureID	Internal database identifier.
termScheduleName	<i>System Administration > Calendar > Terms</i> The name indicating the type of term schedule (e.g. Quarters, Semesters)
termID	Internal database identifier.
termName	<i>System Administration > Calendar > Terms</i> District or school-defined name for this term within this termSchedule (e.g. Quarter 1, Q1, Semester 1, S1).
termSeq	<i>System Administration > Calendar > Terms</i> The sequence on the term used for sorting within Campus.

absentDays	<i>Student Information > General > Attendance</i> The total number of days student is considered absent within term, rounded to a whole or half-day.
unexcusedAbsentDays	<i>Student Information > General > Attendance</i> Total number of student's unexcused absences, rounded to a whole or half-day.
absentMinutes	<i>Student Information > General > Attendance</i> Calculated by the number of minutes in a period minus the number of minutes recorded as "present." Summarized per term.
tardies	<i>Student Information > General > Attendance</i> The total number of occasions a student was considered tardy for the term.
<i>Daily Approx Term Summary</i>	<i>Student > Attendance > Daily Approx Term Summary</i> This section uses the minutes from the calendar's wholeDayAbsence and halfDayAbsence elements to approximate daily absences. Results are the sum of the whole-day or half-day absences and are returned in a flattened, four-term structure. This section is not relevant in all states.
personID	Internal database identifier.
calendarID	Internal database identifier.
term1Absences	<i>Reporting element only</i> Total whole and half-day absences for Term 1.
term1ExcusedAbsences	<i>Reporting element only</i> Total excused whole and half-day absences for Term 1.
term1UnexcusedAbsences	<i>Reporting element only</i> Total unexcused whole and half-day absences for Term 1.
term1Tardies	<i>Reporting element only</i> Total number of tardies for Term 1.
term2Absences	<i>Reporting element only</i> Total whole and half-day absences for Term 2.
term2ExcusedAbsences	<i>Reporting element only</i> Total excused whole and half-day absences for Term 2.
term2UnexcusedAbsences	<i>Reporting element only</i> Total unexcused whole and half-day absences for Term 2.
term2Tardies	<i>Reporting element only</i> Total number of tardies for Term 2.
term3Absences	<i>Reporting element only</i> Total whole and half-day absences for Term 3.

term3ExcusedAbsences	<i>Reporting element only</i> Total excused whole and half-day absences for Term 3.
term3UnexcusedAbsences	<i>Reporting element only</i> Total unexcused whole and half-day absences for Term 3.
term3Tardies	<i>Reporting element only</i> Total number of tardies for Term 3.
term4Absences	<i>Reporting element only</i> Total whole and half-day absences for Term 4.
term4ExcusedAbsences	<i>Reporting element only</i> Total excused whole and half-day absences for Term 4.
term4UnexcusedAbsences	<i>Reporting element only</i> Total unexcused whole and half-day absences for Term 4.
term4Tardies	<i>Reporting element only</i> Total number of tardies for Term 4.
Daily Exact Detail	<i>Student > Attendance > Daily Exact Detail</i> This section uses absent minutes to calculate exact daily absences based on the studentDay minutes defined in either the grade level or the calendar.
personID	Internal database identifier.
calendarID	Internal database identifier.
date	<i>Student Information > General > Attendance</i> The date of the selected attendance record.
termName	<i>System Administration > Calendar > Terms</i> District or school-defined name for this term within this term's schedule (e.g. Quarter 1, Q1, Semester 1, S1).
termSeq	<i>System Administration > Calendar > Terms</i> The sequence on the term used for sorting within Campus.
scheduleName	<i>System Administration > Calendar > Schedule Structure</i> District or school-defined name for this period schedule. Generally a one-period schedule is used unless the school requires rotating days (e.g. Main, MWF, TT).
scheduleSeq	<i>System Administration > Calendar > Schedule Structure</i> The period schedule sequence used for sorting within Campus.
absentMinutes	<i>Student Information > General > Attendance</i> Calculated by the number of minutes in a period minus the number of minutes recorded as "present." Summarized per day.
absentDays	<i>Student Information > General > Attendance</i> Calculated portion of the day student was absent on a particular date.

tardies	<i>Student Information > General > Attendance</i> Total number of occasions a student was considered tardy on a particular date.
unexcused	<i>Student Information > General > Attendance</i> Number of periods a student is marked Absent: Unexcused or Absent: Unknown for a particular date.
Daily Extract Term Count	<i>Student > Attendance > Daily Exact Term Count</i> This section uses the absent minutes to calculate exact daily absences based on the studentDay minutes defined in either the grade level or calendar. Results are summarized per term.
personID	Internal database identifier.
calendarID	Internal database identifier.
termID	Internal database identifier.
termName	<i>System Administration > Calendar > Terms</i> District or school-defined name for this term within this termSchedule (e.g. Quarter 1, Q1, Semester 1, S1).
termSeq	<i>System Administration > Calendar > Terms</i> The sequence on the term is used for sort ordering throughout Campus.
absentMinutes	<i>Student Information > General > Attendance</i> Calculated by the number of minutes in a period minus the number of minutes recorded as “present.” Summarized per term.
absentDays	<i>Student Information > General > Attendance</i> The total calculated number of days student is considered absent within term.
unexcusedAbsentDays	<i>Student Information > General > Attendance</i> The total calculated number of student’s unexcused absences for the term.
tardies	<i>Student Information > General > Attendance</i> The total number of occasions a student was considered tardy for the term.
Daily Exact Term Summary	<i>Student > Attendance > Daily Exact Term Summary</i> This section uses the absent minutes to calculate exact daily absences based off the studentDay minutes defined in either the grade level or the calendar. Results are a flattened, four-term structure.
personID	Internal database identifier.
calendarID	Internal database identifier.
term1Absences	<i>Reporting element only</i> Total calculated number of days student is absent for Term 1.
term1ExcusedAbsences	<i>Reporting element only</i> Total calculated number of excused days student is absent for Term 1.

term1UnexcusedAbsences	<i>Reporting element only</i> Total calculated number of unexcused days student is absent for Term 1.
term1Tardies	<i>Reporting element only</i> Total number of occasions a student was considered tardy for Term 1.
term2Absences	<i>Reporting element only</i> Total calculated number of days student is absent for Term 2.
term2ExcusedAbsences	<i>Reporting element only</i> Total calculated number of excused days student is absent for Term 2.
term2UnexcusedAbsences	<i>Reporting element only</i> Total calculated number of unexcused days student is absent for Term 2.
term2Tardies	<i>Reporting element only</i> Total number of occasions a student was considered tardy for Term 2.
term3Absences	<i>Reporting element only</i> Total calculated number of days student is absent for Term 3.
term3ExcusedAbsences	<i>Reporting element only</i> Total calculated number of excused days student is absent for Term 3.
term3UnexcusedAbsences	<i>Reporting element only</i> Total calculated number of unexcused days student is absent for Term 3.
term3Tardies	<i>Reporting element only</i> Total number of occasions a student was considered tardy for Term 3.
term4Absences	<i>Reporting element only</i> Total calculated number of days student is absent for Term 4.
term4ExcusedAbsences	<i>Reporting element only</i> Total calculated number of excused days student is absent for Term 4.
term4UnexcusedAbsences	<i>Reporting element only</i> Total calculated number of unexcused days student is absent for Term 4.
term4Tardies	<i>Reporting element only</i> Total number of occasions a student was considered tardy for Term 4.
<i>Check in/Check out History</i>	<i>Student > Attendance > Check in/Check out History</i>
calendarID	Internal database identifier.
personID	Internal database identifier.
status	<i>Student Information > General > Attendance (view of check in/out event)</i> Letter of abbreviation representing the attendance code, as displayed in the Status column (e.g., "A" for absent, "T" for tardy).

excuse	<i>Student Information > General > Attendance (view of check in/out event)</i> Letter of abbreviation representing the excuse code, as displayed in the Excuse column of an attendance event (e.g., “E” for excused, “X” for exempt, “U” for unexcused).
comments	<i>Student Information > General > Attendance (view of check in/out event)</i> User-entered comments on the attendance event, as displayed in the Comments column.
description	<i>Student Information > General > Attendance (view of check in/out event)</i> Attendance comment associated with selected attendance code (e.g., “Absent,” “Early Dismissal,” “Late”).
date	<i>Student Information > General > Attendance (view of check in/out event)</i> Date of the check in/out action.
time	<i>Student Information > General > Attendance (view of check in/out event)</i> Time of the check in/out action.
action	<i>Student Information > General > Attendance (view of check in/out event)</i> Description of the check in/out action (i.e., checked student “in” or “out”).

Student > Assessment

Filter Field	Mapping and Definition
<i>All Tests</i>	<i>Student > Assessment > All Tests</i>
personID	Internal database identifier.
testID	Internal database identifier.
name	<i>System Administration > Assessment > Tests</i> Refers to the name given to the test.
code	<i>System Administration > Assessment > Tests</i> Refers to the short name or abbreviation given to the test.
type	<i>System Administration > Assessment > Tests</i> The type of test selected from the Subject field.
startDate	<i>System Administration > Assessment > Tests</i> Indicates when the test will be started for the school year. The date is enter in the mm/dd/yyyy format.
endDate	<i>System Administration > Assessment > Tests</i> Indicates when the test ended for the school year. The date is enter in the mm/dd/yyyy format.
startCode	<i>System Administration > Assessment > Tests</i> The state code associated with a state test.

act	<i>System Administration > Assessment > Tests</i> Identifies the ACT test as the type of national test.
sat	<i>System Administration > Assessment > Tests</i> Identifies the SAT test as the type of national test.
psat	<i>System Administration > Assessment > Tests</i> Identifies the PSAT test as the type of national test.
sat2	<i>System Administration > Assessment > Tests</i> Identifies the SAT2 test as the type of national test.
transcript	<i>System Administration > Assessment > Tests</i> Selection allows the user to view the test on the student transcript.
category	<i>System Administration > Assessment > Tests</i> Indicates whether test is a District, State or National test, as selected from radio button fields.
nclbType	<i>System Administration > Assessment > Tests</i> The type of NCLB assessment (e.g. Reading, Math, Science, LEP).
nclbTypeOther	<i>System Administration > Assessment > Tests</i> User-entered comments defining assessment when Other is selected in NCLB Test Type.
alternate	<i>System Administration > Assessment > Tests</i> Checkbox indicating test is an alternate assessment.
testGrade	<i>System Administration > Assessment > Tests</i> The grade level associated with the test.
parentTestID	Internal database identifier.
parentName	<i>System Administration > Assessment > Tests</i> The name of the selected test's parent assessment.
parentCode	<i>Student Information > General > Assessment</i> The code for the test identified as the parent of selected assessment.
parentType	<i>Student Information > General > Assessment</i> The assessment type for the test identified as the parent of selected assessment.
parentNclbType	<i>Student Information > General > Assessment</i> The NCLB assessment type for the test identified as the parent of selected assessment.
parentNclbTypeOther	<i>Student Information > General > Assessment</i> The NCLB other assessment type for the test identified as the parent of selected assessment.

dateTaken	<i>Student Information > General > Assessment</i> Date the student took the test.
questionCount	<i>System Administration > Assessment > Tests</i> <i>Student Information > General > Assessment</i> The number of questions in the assessment. Not used in all states
rawScore	<i>System Administration > Assessment > Tests</i> <i>Student Information > General > Assessment</i> When flagged in System Administration, checkbox indicates raw score is used as a score field on student's assessment tab.
scaleScore	<i>System Administration > Assessment > Tests</i> <i>Student Information > General > Assessment</i> When flagged in System Administration, checkbox indicates scale score is used as a score field on student's assessment tab.
percent	<i>System Administration > Assessment > Tests</i> <i>Student Information > General > Assessment</i> When flagged in System Administration, checkbox indicates the percent recorded from test vendor is used as a score field on student's assessment tab.
result	<i>System Administration > Assessment > Tests</i> <i>Student Information > General > Assessment</i> When flagged in System Administration, checkbox indicates result is used as a score field on student's assessment tab. The calculated result value is entered based on the result status calculation created by the user.
percentile	<i>System Administration > Assessment > Tests</i> <i>Student Information > General > Assessment</i> When flagged in System Administration, checkbox indicates percentile is used as a score field on student's assessment tab.
reasonCode	<i>System Administration > Assessment > Tests</i> <i>Student Information > General > Assessment</i> When flagged in System Administration, checkbox indicates reasonCode is used as a score field on student's assessment tab. Provides reason for exemption, absence or noncollection of test score.
normalCurveEquivalent	<i>System Administration > Assessment > Tests</i> <i>Student Information > General > Assessment</i> When flagged in System Administration, checkbox indicates NCE is used as a score field on student's assessment tab. The Normal Curve Equivalent, or NCE, is a way of measuring where a student falls along the normal curve.
language	<i>Student Information > General > Assessment</i> <i>System Administration > Custom > Attribute/Dictionary</i> Language associated with test.

receivedAccommodation	<p><i>System Administration > Assessment > Tests</i></p> <p><i>Student Information > General > Assessment</i></p> <p>When flagged in System Administration, checkbox indicates Accommodation Received may be used as a score field on student's assessment tab.</p>
modification	<p><i>System Administration > Assessment > Score Import Wizard</i></p> <p><i>Student Information > General > Assessment</i></p> <p>The modifications indicated by the Accommodation Received field as related to a score.</p>
modification2	<p><i>System Administration > Assessment > Score Import Wizard</i></p> <p><i>Student Information > General > Assessment</i></p> <p>The modifications indicated by the Accommodation Received field as related to a score.</p>
modification3	<p><i>System Administration > Assessment > Score Import Wizard</i></p> <p><i>Student Information > General > Assessment</i></p> <p>The modifications indicated by the Accommodation Received field as related to a score.</p>
modification4	<p><i>System Administration > Assessment > Score Import Wizard</i></p> <p><i>Student Information > General > Assessment</i></p> <p>The modifications indicated by the Accommodation Received field as related to a score.</p>
modification5	<p><i>System Administration > Assessment > Score Import Wizard</i></p> <p><i>Student Information > General > Assessment</i></p> <p>The modifications indicated by the Accommodation Received field as related to a score.</p>
comments	<p><i>Student Information > General > Assessment</i></p> <p>User-entered comments about student's test score.</p>
resultLevel	<p><i>Student Information > General > Assessment</i></p> <p>Value pulled in relation to all results.</p>
itemsAttempted	<p><i>System Administration > Assessment > Tests</i></p> <p>Indicates the total count of items attempted will be used in determining student's passing of test.</p>
stanine	<p><i>System Administration > Assessment > Tests</i></p> <p>Indicates the test will use the stanine score.</p>
quartile	<p><i>System Administration > Assessment > Tests</i></p> <p>Indicates the test will use Quartile score to determine passing.</p>
gradeEquivalent	<p><i>System Administration > Assessment > Tests</i></p> <p>Indicates the test will use the Grade Equivalent for the score.</p>
performanceLevel	<p><i>System Administration > Assessment > Tests</i></p> <p>Indicates the test will use the Performance level to determine passing status.</p>

include	<i>Does not appear, used internally.</i>
localPercentile	<i>System Administration > Assessment > Tests</i> Indicates the Local Percentile value will be used in determining student's passing of the test.
localStanine	<i>System Administration > Assessment > Tests</i> Indicates the Local Stanine will be used in determining student's passing of test.
lexileScore	<i>System Administration > Assessment > Tests</i> Indicates the Lexile Score will be used in determining student's passing of test.
developmentalScore	<i>System Administration > Assessment > Tests</i> Indicates the test will use the developmental score field.
finalRating	<i>System Administration > Assessment > Tests</i> Indicates the test will use the Final Rating for the score (FL).
custom1	<i>System Administration > Assessment > Tests</i> Stores value of custom test score field - Score 1.
custom2	<i>System Administration > Assessment > Tests</i> Stores value of custom test score field - Score 2.
custom3	<i>System Administration > Assessment > Tests</i> Stores value of custom test score field - Score 3.
custom4	<i>System Administration > Assessment > Tests</i> Stores value of custom test score field - Score 4.
districtID	Internal database identifier.
schoolID	Internal database identifier.
acctProfLevelGroupName	<i>System Administration > Assessment > Proficiency Levels</i> Name of the group of proficiency levels.
acctProfLevelCode	<i>System Administration > Assessment > Proficiency Levels</i> Code attached to the proficiency level.
acctProfLevelDesc	<i>System Administration > Assessment > Proficiency Levels</i> Description of the proficiency level.
resultLabel	<i>System Administration > Assessment > Tests</i> The label attached to a result option.
passed	<i>System Administration > Assessment > Tests</i> Checkbox indicating result is a passing score.
TestPurpose	<i>Student Information > General > Assessments > Test Score Detail</i> State code of test. Not used in all states.

accommodation	<i>Student Information > General > Assessment > Test Score Detail</i> Type of accommodation student received while taking the test.
nonParticipationReason	<i>Student Information > General > Assessment > Test Score Detail</i> Indicates reason test score was not reported.
graduationRequirement	<i>Student Information > General > Assessment > Test Score Detail</i> Indicates if the test was required for graduation.
National Tests	<i>Student > Assessment > National Tests</i>
personID	Internal database identifier.
ACTDateLastTaken	<i>Reporting element only</i> Internal indicator of a student's most recent ACT assessment date.
ACTMaxScore	<i>Reporting element only</i> Internal indicator of a student's highest scale score on an ACT assessment.
SATDateLastTaken	<i>Reporting element only</i> Internal indicator of a student's most recent SAT assessment date.
SATMaxScore	<i>Reporting element only</i> Internal indicator of a student's highest scale score on an SAT assessment.
PSATDateLastTaken	<i>Reporting element only</i> Internal indicator of a student's most recent PSAT assessment date.
PSATMaxScore	<i>Reporting element only</i> Internal indicator of a student's highest scale score on a PSAT assessment.
SAT2DateLastTaken	<i>Reporting element only</i> Internal indicator of a student's most recent SAT2 assessment date.
SAT2MaxScore	<i>Reporting element only</i> Internal indicator of a student's highest scale score on an SAT2 assessment.
State Tests	<i>Student > Assessment > State Tests</i>
personID	Internal database identifier.
testID	Internal database identifier.
name	<i>System Administration > Assessment > Tests</i> <i>Student Information > Assessment</i> Refers to the name given to the test.
code	<i>System Administration > Assessment > Tests</i> <i>Student Information > General > Assessment</i> Refers to the short name or abbreviation given to the test.
type	<i>System Administration > Assessment > Tests</i> Indicates if the test is a district, state or national test.

startDate	<i>System Administration > Assessment > Tests</i> Indicates when the test will be started for the school year. The date is enter in the mm/dd/yyyy format.
endDate	<i>System Administration > Assessment > Tests</i> Indicates when the test ended for the school year. The date is enter in the mm/dd/yyyy format.
stateCode	<i>System Administration > Assessment > Tests</i> Provides a location to enter a state code associated with a test.
transcript	<i>System Administration > Assessment > Tests</i> Selection allows the user to view the test on the student transcript.
dateTaken	<i>Student Information > General > Assessment</i> Date the student took the test.
questionCount	<i>System Administration > Assessment > Tests</i> <i>Student Information > General > Assessment</i> The number of questions in the assessment. Not used in all states
rawScore	<i>System Administration > Assessment > Tests</i> <i>Student Information > General > Assessment</i> When flagged in System Administration, checkbox indicates raw score is used as a score field on student's assessment tab.
scaleScore	<i>System Administration > Assessment > Tests</i> <i>Student Information > General > Assessment</i> When flagged in System Administration, checkbox indicates scale score is used as a score field on student's assessment tab.
percent	<i>System Administration > Assessment > Tests</i> <i>Student Information > General > Assessment</i> When flagged in System Administration, checkbox indicates the percent recorded from test vendor is used as a score field on student's assessment tab.
reasonCode	<i>System Administration > Assessment > Tests</i> <i>Student Information > General > Assessment</i> When flagged in System Administration, checkbox indicates reasonCode is used as a score field on student's assessment tab. Provides reason for exemption, absence or noncollection of test score.
result	<i>System Administration > Assessment > Tests</i> <i>Student Information > General > Assessment</i> When flagged in System Administration, checkbox indicates result is used as a score field on student's assessment tab. The calculated result value is entered based on the result status calculation created by the user.
comments	<i>Student Information > General > Assessment</i> User-entered comments about this test score.

Student > Grading

Filter Fields	Mapping and Definition
<i>Term GPA</i>	<i>Student > Grading > Term GPA</i>
personID	Internal database identifier.
calendarID	Internal database identifier.
term1GPA	<i>Student Information > General > Grades</i> GPA for Term 1.
term1Weight	<i>Course > Grading Tasks > Course Grading Detail</i> Total Term GPA weight for Term 1 grading tasks.
term2GPA	<i>Student Information > General > Grades</i> GPA for Term 2.
term2Weight	<i>Course > Grading Tasks > Course Grading Detail</i> Total Term GPA weight for Term 2 grading tasks.
term3GPA	<i>Student Information > General > Grades</i> GPA for Term 3.
term3Weight	<i>Course > Grading Tasks > Course Grading Detail</i> Total Term GPA weight for Term 3 grading tasks.
term4GPA	<i>Student Information > General > Grades</i> GPA for Term 4.
term4Weight	<i>Course > Grading Tasks > Course Grading Detail</i> Total Term GPA weight for Term 4 grading tasks.
term5GPA	<i>Student Information > General > Grades</i> GPA for Term 5.
term5Weight	<i>Course > Grading Tasks > Course Grading Detail</i> Total Term GPA weight for Term 5 grading tasks.
term6GPA	<i>Student Information > General > Grades</i> GPA for Term 6.
term6Weight	<i>Course > Grading Tasks > Course Grading Detail</i> Total Term GPA weight for Term 6 grading tasks.
term7GPA	<i>Student Information > General > Grades</i> GPA for Term 7.
term7Weight	<i>Course > Grading Tasks > Course Grading Detail</i> Total Term GPA weight for Term 7 grading tasks.

term8GPA	<i>Student Information > General > Grades</i> GPA for Term 8.
term8Weight	<i>Course > Grading Tasks > Course Grading Detail</i> Total Term GPA weight for Term 8 grading tasks.
term9GPA	<i>Student Information > General > Grades</i> GPA for Term 9.
term9Weight	<i>Course > Grading Tasks > Course Grading Detail</i> Total Term GPA weight for Term 9 grading tasks.
term10GPA	<i>Student Information > General > Grades</i> GPA for Term 10.
term10Weight	<i>Course > Grading Tasks > Course Grading Detail</i> Total Term GPA weight for Term 10 grading tasks.
term11GPA	<i>Student Information > General > Grades</i> GPA for Term 11.
term11Weight	<i>Course > Grading Tasks > Course Grading Detail</i> Total Term GPA weight for Term 11 grading tasks.
term12GPA	<i>Student Information > General > Grades</i> GPA for Term 12.
term12Weight	<i>Course > Grading Tasks > Course Grading Detail</i> Total Term GPA weight for Term 12 grading tasks.
Grading Detail	<i>Student > Grading > Grading Detail</i>
personID	Internal database identifier.
calendarID	Internal database identifier.
trialID	Internal database identifier.
sectionID	Internal database identifier.
courseID	Internal database identifier.
courseNumber	<i>Scheduling > Courses</i> District or school-defined course number.
courseName	<i>Scheduling > Courses</i> District or school-defined name for the course.
homeroom	<i>Scheduling > Courses > Section</i> Indicates whether or not the course is designated as a homeroom (for state reporting purposes).
sectionNumber	<i>Scheduling > Courses > Sections</i> The section number for an instance of a course.

teacherDisplay	<i>Scheduling > Courses > Sections</i> Stores the teacher name displayed on student schedules, default to fullname, may be changed in section editor.
termID	Internal database identifier.
termName	<i>System Administration > Calendar > Terms</i> District or school-defined name for this term within this termSchedule (e.g. Quarter 1, Q1, Semester 1, S1).
termSeq	<i>System Administration > Calendar > Terms</i> The sequence on the term is used for sort ordering throughout the product.
schedule	<i>System Administration > Calendar > Periods</i> Name of a section's period schedule (if more than one period is assigned, report returns first).
periodName	<i>System Administration > Calendar > Periods</i> District or school-defined name for this period (e.g. HR, 01, 02, ASA). If section is assigned to more than one period, report will return the first period.
periodSeq	<i>System Administration > Calendar > Periods</i> The period sequence used for sorting the list of periods throughout Campus.
taskID	Internal database identifier.
task	<i>Grading & Standards > Grading Tasks</i> Name of grading task.
taskSeq	<i>Grading & Standards > Grading Tasks</i> Sequence of grading task.
scoreID	Internal database identifier.
score	<i>Student Information > General > Grades > Gradebook Icon</i> Score for grading task.
comments	<i>Student Information > General > Grades > Gradebook Icon</i> Comments associated with score.
percent	<i>Student Information > General > Grades > Gradebook Icon</i> Percent associated with the score.
date	<i>Student Information > General > Grades > Gradebook Icon</i> Date of the score.
scoreListItemName	<i>Grading & Standards > Score Group & Rubrics</i> Name of score group item (e.g. A, C+, Pass, no credit). This score shows on transcripts and report cards.
scoreListItemSeq	<i>Grading & Standards > Score Group & Rubrics</i> Sequence of score group item.

passingScore	<i>Grading & Standards > Score Group & Rubrics</i> If flagged, checkbox indicates the score is a passing score as defined by district or state.
termMask	<i>Scheduling > Courses > Grading Tasks</i> <i>Scheduling > Courses > Standards</i> If flagged, checkbox indicates the task is graded for the selected term (e.g. Term 1, Term 2, Term 3).
activeMask	<i>Grading & Standards > Grading Tasks</i> <i>Scheduling > Courses > Standards</i> If flagged, checkbox allows teachers to grade the task for the selected term.
transcript	<i>Grading & Standards > Grading Tasks</i> <i>Grading & Standards > Standards Bank</i> If flagged, checkbox indicates that this course will post to transcript.
termGPA	<i>Scheduling > Courses > Grading Tasks</i> The number assigned determines the weight student receives for score for student's term honor roll (not transcript).
credit	<i>Scheduling > Courses > Grading Tasks</i> Indicates the amount of transcript credit student receives for completing grading task.
creditType	<i>Scheduling > Courses > Grading Tasks</i> Indicates the type of credit earned for display on transcript.
standardID	Internal database identifier.
stateStandard	<i>Scheduling > Courses > Standards</i> If flagged, checkbox indicates standard is designated as a state standard.

Student > Learner Portfolio

Filter Fields	Mapping and Definition
GPA	<i>Student > Learner Portfolio > GPA</i>
personID	Internal database identifier.
calendarID	Internal database identifier.
grade	<i>Student Information > General > Credit Summary</i> Grade for which GPA is being calculated.
cumGpaBasic	<i>Student Information > General > Credit Summary</i> Standard cumulative GPA.
cumGpaUnweighted	<i>Student Information > General > Credit Summary</i> Unweighted cumulative GPA.
cumGpaCustom	<i>Student Information > General > Credit Summary</i> Custom-configured GPA.
Class Rank with Cum GPA	<i>Student > Learner Portfolio > Class Rank with Cum GPA</i>
personID	Internal database identifier.
calendarID	Internal database identifier.
grade	<i>Student Information > General > Credit Summary</i> Grade for which to calculate CumGPA and class ranking.
cumGPA	<i>Student Information > General > Transcripts</i> The cumulative GPA based on the Unweighted GPA value (if different from the weighted value).
rank	<i>Student Information > General > Credit Summary</i> The student's rank within grade level based on Unweighted GPA.
out_of	<i>Student Information > General > Credit Summary</i> The total number of students included in ranking for grade level based on Unweighted GPA.
Class Rank with Unweighted Cum GPA	<i>Student > Learner Portfolio > Class Rank with Unweighted Cum GPA</i>
personID	Internal database identifier.
calendarID	Internal database identifier.
grade	<i>Student Information > General > Credit Summary</i> Grade for which to check CumGPA and class ranking.

cumGPA	<i>Student Information > General > Credit Summary</i> The cumulative GPA.
rank	<i>Student Information > General > Credit Summary</i> The student's rank within grade level.
out_of	<i>Student Information > General > Credit Summary</i> The total number of students included in ranking for grade level.
<i>Class Rank with Custom Cum GPA</i>	<i>Student > Learner Portfolio > Class Rank with Custom Cum GPA</i>
gpaID	Internal database identifier.
gpaName	<i>System Administration > Grading & Standards > GPA Calculation</i> The name of the GPA Calculation being used.
personID	Internal database identifier.
calendarID	Internal database identifier.
grade	<i>Student Information > General > Credit Summary</i> Grade from which to pull CumGPA and class ranking.
cumGPA	<i>Student Information > General > Credit Summary</i> The cumulative GPA.
rank	<i>Student Information > General > Credit Summary</i> The student's rank within grade level.
out_of	<i>Student Information > General > Credit Summary</i> The total number of students included in ranking for grade level.
<i>Rolling Cum GPA</i>	<i>Student > Learner Portfolio > Rolling Cum GPA</i>
personID	Internal database identifier.
calendarID	Internal database identifier.
termSeq	<i>System Administration > Calendar > Terms</i> The sequence of term within school year.
termName	<i>System Administration > Calendar > Terms</i> The name of term.
gpa	<i>Student Information > General > Grades</i> The rolling cumulative GPA calculation.
weight	<i>Scheduling > Courses</i> The weight assigned to a course (used as a multiplier for GPA calculations).
gpaBonus	<i>Scheduling > Courses</i> GPA calculation using GPA Bonus Points.

bonusPoints	<i>Scheduling > Courses</i> Number of bonus points are factored into the GPA bonus.
Transcript Detail	<i>Student > Learner Portfolio > Transcript Detail</i>
personID	Internal database identifier.
transcriptID	Internal database identifier.
courseNumber	<i>Student Information > General > Transcript</i> District or school-defined course number.
courseName	<i>Student Information > General > Transcript</i> District or school-defined name for the course.
standardNumber	<i>Student Information > General > Transcript</i> State or district-defined standard number for this course.
standardName	<i>Student Information > General > Transcript</i> State or district-defined standard name for this course.
status	<i>Student Information > General > Transcript</i> Status of course. Options are N/A (Not Applicable), R (Required) or E (Elective).
date	<i>Student Information > General > Transcript</i> Date stamp when transcript entry was posted.
startYear	<i>Student Information > General > Transcript</i> 4-digit year representing the start of the school year this entry was earned.
endYear	<i>Student Information > Transcript</i> 4-digit year representing the end of the school year this entry was earned.
grade	<i>Student Information > Transcript</i> Student's grade level when this entry was earned.
score	<i>Student Information > Transcript</i> Student's score received for this transcript entry.
percent	<i>Student Information > Transcript</i> Percentage value associated with the score received on this entry, if any.
gpaWeight	<i>Student Information > Transcript</i> GPA weight for the course as entered on the Scheduling > Course tab.
gpaValue	<i>Student Information > Transcript</i> GPA value of this score based on the grading scale for this district or school.
bonusPoints	<i>Student Information > Transcript</i> Used to hold any GPA bonus points associated with this entry.

gpaMax	<i>Student Information > Transcript</i> Maximum GPA value achievable for this course and score. Used for weighted GPA calculations.
scoreID	Internal database identifier.
startTerm	<i>Student Information > Transcript</i> Term number representing the first term the course met for this transcript entry (e.g. 1 = first term = Q1 or S1, 2 = second term = Q2 or S2).
endTerm	<i>Student Information > Transcript</i> Term number representing the last term the course for this transcript entry met.
termsLong	<i>Student Information > Transcript</i> Number of terms the course met for this entry.
actualTerm	<i>Student Information > Transcript</i> Actual term for which this entry was granted.
comments	<i>Student Information > Transcript</i> User-entered information on transcript entry.
technology	<i>Student Information > Transcript</i> Indicates whether course met the technology reporting requirements.
honorsCode	<i>Scheduling > Courses</i> Difficulty level of course.
vocationalCode	<i>Scheduling > Courses</i> State-defined vocational code for the course. Not used in all states.
distanceCode	<i>Scheduling > Courses</i> Instructional setting of course.
activityCode	<i>Scheduling > Courses</i> Indicates that this was an activity-based course rather than standard curriculum. Not used in all states.
specialGPA	<i>Student Information > General > Transcript > Transcript Course editor</i> Special GPA assigned to a course.
unweightedGPAValue	<i>Student Information > General > Transcript > Transcript Course editor</i> Used to contain the unweighted GPA value for the score received on this entry.
repeatCourse	<i>Student Information > General > Transcript</i> Indicates if the course was repeated by the student.
schoolName	<i>Student Information > General > Transcript</i> The name of the school associated with the transcript.
creditsEarned	<i>Student Information > Transcript</i> Credits earned for transcript entry.

creditsAttempted	<i>Student Information > Transcript</i> Credits attempted for transcript entry.
standardName1	<i>Student Information > Transcript</i> State or district-defined standard name for this course. Used if standards are nested.
standardName2	<i>Student Information > Transcript</i> State or district-defined standard name for this course. Used if standards are nested.
standardName3	<i>Student Information > Transcript</i> State or district-defined standard name for this course. Used if standards are nested.
stateStandard	<i>Student Information > Transcript</i> Code aligning course to state standard.
giftedContentArea	<i>Student Information > Transcript</i> Used in some states to identify the state defined gifted delivery area for this course.
giftedDelivery	<i>Student Information > Transcript</i> Flag used in some states to identify this course as targeted at gifted students.
transcriptField1	<i>Student Information > General > Transcript > Transcript Course editor</i> Definition of the transcript item.
transcriptField2	<i>Student Information > General > Transcript > Transcript Course editor</i> Definition of the transcript item.
transcriptField3	<i>Student Information > General > Transcript > Transcript Course editor</i> Definition of the transcript item.
transcriptField4	<i>Student Information > General > Transcript > Transcript Course editor</i> Definition of the transcript item.
transcriptField5	<i>Student Information > General > Transcript > Transcript Course editor</i> Definition of the transcript item.

Student > Locker

Filter Field	Mapping and Definition
<i>Locker Detail</i>	<i>Student > Locker > Locker Detail</i>
assignmentID	Internal database identifier.
personID	Internal database identifier.
calendarID	Internal database identifier.
schoolID	Internal database identifier.

lockerID	Internal database identifier.
startDate	<i>System Administration > Resources > Resources > Lockers</i> The first day student is assigned to locker.
endDate	<i>System Administration > Resources > Resources > Lockers</i> The last day student is assigned to locker.
lockerNumber	<i>System Administration > Resources > Resources > Lockers</i> The number of locker.
lockerSerialNumber	<i>System Administration > Resources > Resources > Lockers</i> The serial number of the locker.
type	<i>System Administration > Resources > Resources > Lockers</i> The code associated with type of locker (e.g. academic, athletic, phy ed, music) as defined in System Administration > Locker > Locker Type.
locationID	Internal database identifier.
location	<i>System Administration > Resources > Resources > Lockers</i> The physical location of the locker as defined in System Administration > Resources > Resources > Locker Location.
grade	<i>System Administration > Resources > Resources > Lockers</i> The grade level assigned to a set of lockers.
reserved	<i>System Administration > Resources > Resources > Lockers</i> If flagged, this checkbox indicates that a locker has been reserved and will not allow it to be assigned to students.
lockID	Internal database identifier.
lockSerialNumber	<i>System Administration > Resources > Resources > Lockers</i> The serial number of the lock.
comboSeq	<i>System Administration > Resources > Resources > Lockers</i> The combination of a locker that is part of a built-in series of lockers.
combo	<i>Student Information > Lockers</i> The combination of the locker.
<i>Locker Summary</i>	<i>Student > Locker > Locker Summary</i>
personID	Internal database identifier.
calendarID	Internal database identifier.
academicLockerNumber	<i>Only available for ad hoc reporting</i> The locker number assigned to a student with locker Type field code of "ED." (Report will return multiple rows if multiple "ED" lockers are assigned.)

academicLockerCombo	<i>Only available for ad hoc reporting</i> The combinations of the lockers associated locker Type field code of "ED."
phyEdLockerNumber	<i>Only available for ad hoc reporting</i> The number of a locker assigned to a student with locker Type field code of "PE."
phyEdLockerCombo	<i>Only available for ad hoc reporting</i> The combinations of the lockers associated locker Type field code of "PE."
activityLockerNumber	<i>Only available for ad hoc reporting</i> The number of a locker assigned to a student with locker Type field code of "AC."
activityLockerCombo	<i>Only available for ad hoc reporting</i> The combinations of the lockers associated locker Type field code of "AC."

Student > Fee

Filter Field	Mapping and Definition
<i>Fee Detail</i>	<i>Student > Fee > Fee Detail</i>
personID	Internal database identifier.
calendarID	Internal database identifier.
dueDate	<i>Student Information > Fees</i> Date the fee is due to be paid.
exempt	<i>Student Information > Fees</i> If flagged, this checkbox indicates the student is exempt from selected fee.
comments	<i>Student Information > Fees</i> User-entered comments on the fee.
courseID	Internal database identifier.
courseNumber	<i>Scheduling > Courses > Fees tab</i> Course number associated with fee.
courseName	<i>Scheduling > Courses > Fees tab</i> Course name associated with fee.
feeID	Internal database identifier.
feeName	<i>System Administration > Fees</i> Fee name.
feeDescription	<i>System Administration > Fees</i> Fee description.

feeType	<i>System Administration > Fees</i> Activity or event for which the fee is assessed, as set up in System Administration > Custom > Attribute/Dictionary > Fee > Fee Type.
nonstackable	<i>System Administration > Fees</i> If flagged, Assessed Only Once checkbox indicates the fee cannot be assessed more than one time.
accountNumber	<i>System Administration > Fees</i> District finance account with which this fee is associated.
feeAmount	<i>System Administration > Fees</i> Fee amount.
feeCredit	<i>Student Information > Fees</i> Amount student has paid toward the fee.
feeAdjustment	<i>Student Information > Fees</i> The total fee adjustments on a particular fee.
balance	<i>Student Information > Fees</i> Amount student still owes toward the fee.
<i>Fee Summary</i>	<i>Student > Fee > Fee Summary</i>
personID	Internal database identifier.
calendarID	Internal database identifier.
feeCount	<i>Student Information > Fees</i> Number of fees charged to a student for the selected calendar.
totalFees	<i>Student Information > Fees</i> Total amount of fees charged to student for the selected calendar.
totalPaid	<i>Student Information > Fees</i> Total amount of fees paid by student for the selected calendar.
totalAdjustment	<i>Student Information > Fees</i> The total fee adjustments for all fees for a student.
totalBalance	<i>Student Information > Fees</i> Current fee balance for student. When fees are owed, number will be negative.

Student > Transportation

Filter Field	Mapping and Definition
<i>Bus Info</i>	<i>Student > Transportation > Bus Info</i>
personID	Internal database identifier.
calendarID	Internal database identifier.
startDate	<i>Student Information > General > Transportation</i> The date on which this transportation method began.
endDate	<i>Student Information > General > Transportation</i> The date on which this transportation method ended.
transportationID	Internal database identifier.
transportationCode	<i>Student Information > General > Transportation</i> The code indicating the type of transportation the student receives.
inBusID	Internal database identifier.
inBusNumber	<i>Student Information > General > Transportation</i> The bus the student rides to school.
inTime	<i>Student Information > General > Transportation</i> The time at which the student's bus arrives at school.
inBusStop	<i>Student Information > General > Transportation</i> The location of where the student's morning bus picks up the student.
xoutBusID	Internal database identifier.
outBusNumber	<i>Student Information > General > Transportation</i> The bus the student rides from school.
outTime	<i>Student Information > General > Transportation</i> The time at which the student's bus leaves school.
outBusStop	<i>Student Information > General > Transportation</i> The location of where the bus drops the student off from school.
lateBusID	Internal database identifier.
lateBusNumber	<i>Student Information > General > Transportation</i> The bus the student rides if participating in after school activities.
milesTransported	<i>Student Information > General > Transportation</i> The number of miles the student rides the bus.
FTE	<i>Student Information > General > Transportation</i> The FTE for transportation services. Not used in all states.

transportingDistrict	<i>Student Information > General > Transportation</i> The district responsible for transporting the student.
<i>Parking Info</i>	<i>Student > Transportation > Parking Info</i>
parkingID	Internal database identifier.
personID	Internal database identifier.
make	<i>Student Information > Transportation</i> Make of vehicle (e.g. Chevrolet, Honda, Jeep)
model	<i>Student Information > Transportation</i> Model of vehicle (e.g. Cavalier, Civic, Laredo)
color	<i>Student Information > Transportation</i> Vehicle's color.
plateNumber	<i>Student Information > Transportation</i> Vehicle's license plate number.
parkingPermit	<i>Student Information > Transportation</i> The parking permit assigned to vehicle.
calendarID	Internal database identifier.
startDate	<i>Student Information > Transportation</i> Start date of transportation code.
endDate	<i>Student Information > Transportation</i> Start date of transportation code.

Student > Activities

Filter Field	Mapping and Definition
<i>Athlete Eligibility</i>	<i>Student > Activities > Athlete Eligibility</i>
personID	Internal database identifier.
physicalDate	<i>Student Information > Athletics</i> Date of student's athletics physical.
physicalEndDate	<i>Student Information > Athletics</i> Expiration date of athletics physical.
transportationPermission	<i>Student Information > Athletics</i> Permission to be transported to sporting events.
emergencyCard	<i>Student Information > Athletics</i> Emergency card on file.

parentConsent	<i>Student Information > Athletics</i> Parent consent to participate in activities.
studentContact	<i>Student Information > Athletics</i> Student participation contract.
insuranceWaiver	<i>Student Information > Athletics</i> Insurance waiver on file for student participation.
comments	<i>Student Information > Athletics</i> User-entered comments.
Activity Participation	<i>Student > Activities > Activity Participation</i> (relevant for any course a student is assigned to that has an Activity code selected)
personID	Internal database identifier.
calendarID	Internal database identifier.
activityNumber	<i>Student Information > General > Activities</i> Course Number of activity course.
activityName	<i>Student Information > General > Activities</i> Course Name of activity course.
teacherDisplay	<i>Scheduling > Courses > Sections</i> Stores the teacher name displayed on student schedules for this activity course (defaults to fullname, may be changed in Section editor).
activityCode	<i>Scheduling > Courses > Course tab</i> Code for type of activity in Activity field as defined in System Administration > Custom > Attribute/Dictionary > Course > Activity.
codeDescription	<i>Scheduling > Courses > Course tab</i> Description selected from the Activity field, as set up in System Administration > Custom > Attribute/Dictionary > Course > Activity.
termSeq	<i>System Administration > Calendar > Terms</i> The term sequence number in which the activity course is scheduled. (Report will return multiple rows if course occurs in more than one term.)
termName	<i>System Administration > Calendar > Terms</i> The name of term in which the activity course is scheduled. (Report will return multiple rows if course occurs in more than one term.)

Student > Campus Usage

Filter Field	Mapping and Definition
<i>User Account/Summary</i>	<i>Student > Campus Usage > User Account/Summary</i>

userID	Internal database identifier.
personID	Internal database identifier.
districtID	Internal database identifier.
username	<i>System Administration > User Security > User > User Account</i> Login name assigned to a user.
allModules	<i>System Administration > User Security > User > User Account</i> If flagged, the All Tools checkbox indicates a user has rights to all tools/modules in Campus.
allCalendars	<i>System Administration > User Security > User > User Account</i> If flagged, indicates whether or not user has rights to all historical calendars.
failCount	<i>System Administration > User Security > User > User Account</i> Stores the number of failed login attempts the user has had since the last successful login.
forceChangePassword	<i>System Administration > User Security > User > User Account</i> If flagged, indicates whether or not user must change his/her password at next login attempt.
disable	<i>System Administration > User Security > User > User Account</i> If flagged, indicates whether or not the User's account has been disabled, a result of either administrator action or excessive failed login attempts.
expiresDate	<i>System Administration > User Security > User > User Account</i> Date the user's account will become inactive.
homepage	<i>System Administration > User Security > User > User Account</i> Lists the Portal URL for Portal users.
name	<i>System Administration > User Security > User</i> Name of the user who last logged in (from SecurityAccess table).
serverName	<i>System Administration > User Security > User</i> Network name of server user logged into.
remoteIP	<i>Access Log</i> <i>System Administration > User Security > User > Access Log</i> Stores the IP address from which login was attempted.
remoteName	<i>Access Log</i> <i>System Administration > User Security > User > Access Log</i> Stores the remote browser name from which login was attempted.
remoteBrowser	<i>Does not appear.</i> Stores the info about the browser from which login was attempted.

timestamp	<i>Access Log</i> <i>System Administration > User Security > User > Access Log</i> Records the date and time of login attempts for user.
appServer	<i>Access Log</i> <i>System Administration > User Security > User > Access Log</i> Stores the appserver instance that processed the login attempt.
accountType	<i>System Administration > User Security > User Account</i> Homepage interface assigned to the account (e.g. Campus application, Portal, other).
lastAccessedTimestamp	<i>Access Log</i> <i>System Administration > User Security > User > Access Log</i> Timestamp of the most recent login attempt.
loginsThisWeek	<i>Access Log</i> <i>System Administration > User Security > User > Access Log</i> Count of logins occurring within the last seven days.
loginsThisMonth	<i>Access Log</i> <i>System Administration > User Security > User > Access Log</i> Count of logins occurring within the last thirty days.
totalLoginCount	<i>Access Log</i> <i>System Administration > User Security > User > Access Log</i> Total logins stored in the SecurityAccess table.
LDAPDN	<i>Does Not Appear</i> The Distinguished Name from the Active Directory. Results indicate the user's location in the Active Directory organizational structures and the common name.
LDAPGUID	<i>Does Not Appear</i> Populates when users have been updated to the LDAP account and linked to the Active Directory.

Student > Food Service

Filter Fields	Mapping and Definition
<i>Eligibility</i>	<i>Student > Food Service > Eligibility</i>
eligibilityID	Internal database identifier
eligibility	<i>FRAM > Eligibility</i> Student's meal status eligibility.
personID	Internal database identifier

endYear	<i>FRAM > Eligibility</i> Last school year to which eligibility applies.
type	<i>FRAM > Eligibility</i> Certified type of eligibility
startDate	<i>FRAM > Eligibility</i> Start date of the food service eligibility.
endDate	<i>FRAM > Eligibility</i> End date of the food service eligibility.
applicationID	Internal database identifier
optOutMedicaid	<i>FRAM > Eligibility</i> Indicates that parent does not want to be contacted by that specific agency.
optOutSCHIP	<i>FRAM > Eligibility</i> Indicates that parent does not want to be contacted by that specific agency.
districtID	Internal database identifier
eligibilityGUID	Internal database identifier
freeMilk	<i>FRAM > Eligibility</i> Student receives free milk assistance.
notParticipate	<i>FRAM > Eligibility</i> Indicates that student does not participate in meal assistance.
StateCode	<i>FRAM > Eligibility</i> State eligibility code attached to the eligibility.