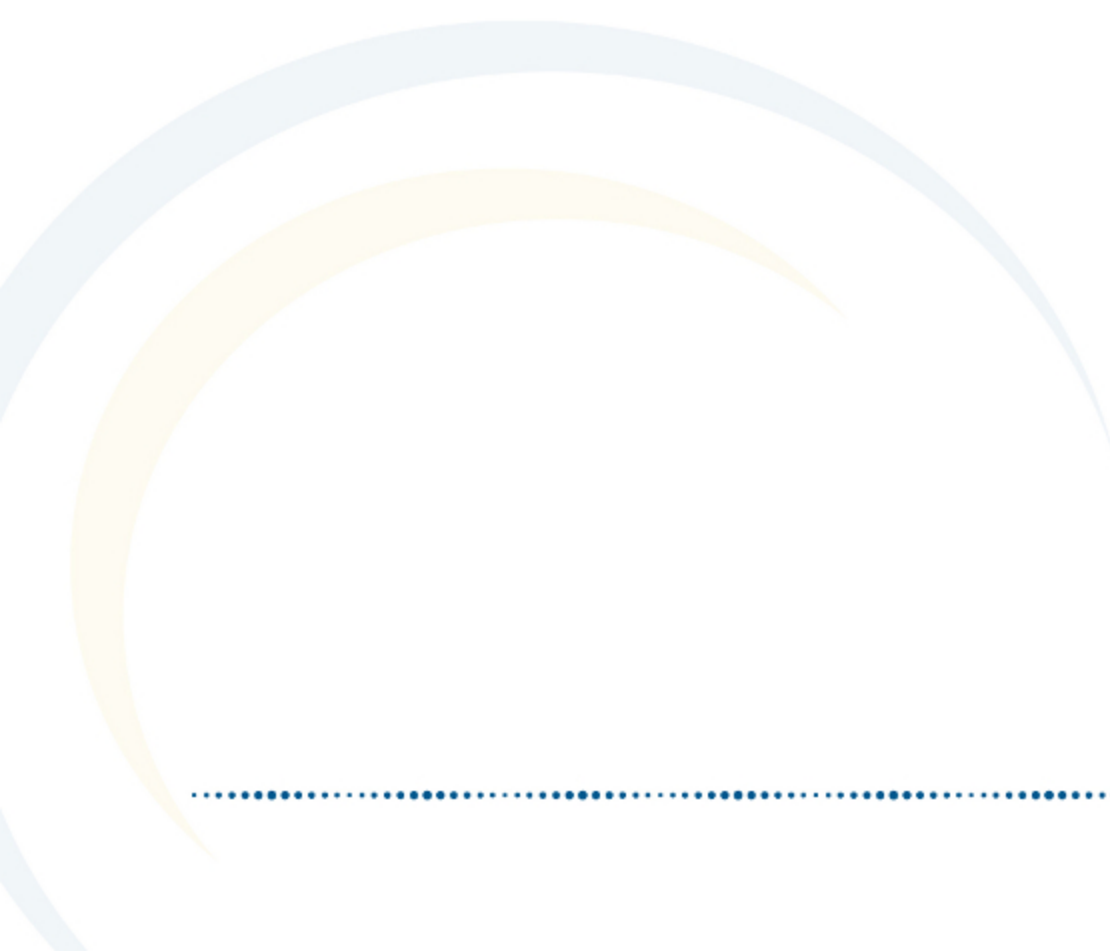


## Course-Section Filter Fields for Ad hoc Reporting

---

December 2011



---

**This document is intended for restricted use only.**

**Infinite Campus asserts that this document contains proprietary information that would give our competitors undue advantage should they come into possession of any part or all of it. As such, this document cannot be publicly disclosed unless so ordered by a court of competent jurisdiction.**

©2010 Infinite Campus, Inc. All rights reserved.

INFINITE CAMPUS and Transforming K12 Education are registered trademarks of Infinite Campus, Inc. The INFINITE CAMPUS logo is a trademark of Infinite Campus, Inc. This publication, or any part thereof, may not be reproduced or transmitted in any form or any means, electronic or mechanical, including photocopying, recording, storage in an information retrieval system, or otherwise, by anyone other than Infinite Campus, Inc. without written permission of Infinite Campus, Inc., 4321 109th Avenue NE, Blaine, MN 55449, tel. (651) 631-0000, email [info@infinitecampus.com](mailto:info@infinitecampus.com).

---

# Course-Section Filter Fields for Ad hoc Reporting

[Course/Section Filter Fields \(Query Wizard\)](#) | [Course > Course Information](#) | [Course > Section Information](#) | [Course > School Calendar](#) | [Course > School](#) | [Course > District](#)

**i** This documentation relates to the E.1130 Release Pack. For information on finding your Infinite Campus version, see [Finding the Infinite Campus Version](#).

## Overview

**PATH:** *Ad hoc Reporting > Filter Designer*

**PATH:** *Ad hoc Reporting > Report Designer*

The Ad hoc Reporting tools allow users to create custom queries and reports on various types of information stored within the Campus database. Reports may be used for data analysis and state reporting and queries may be exported out of Campus or used to create filters for standard reports. Custom filters and reports are built by adding elements from Ad hoc Reporting tools like the [Filter Designer](#). The following is a list of available fields that can be included in Ad hoc reports that draw from course and section data.

The name of an Ad hoc element is not necessarily the name listed in the user interface; therefore, the following tables briefly define and map Ad hoc elements to the appropriate interface locations/fields.

These fields appear in Ad hoc Reporting > [Filter Designer](#), but many can be used in the [Report Designer](#). However, some areas/fields are not currently available in the [Report Designer](#).

**✓** This article details the fields available for building Census/Staff filters. For other available fields, see the [Student](#) and [Census/Staff](#) articles.

## Course/Section Filter Fields (Query Wizard)

Fields listed in this section are available for section from the Filter Designer Query Wizard.

**✓** See the [Query Wizard](#) article for instructions on managing these filters.

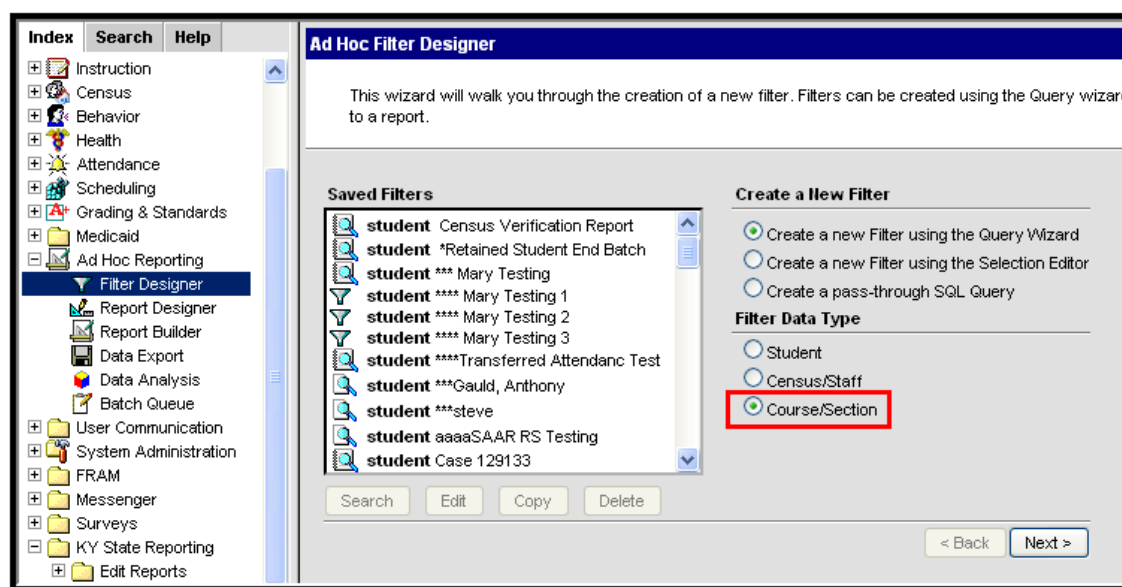




Image 1: Filter Data Type - Course/Section

## Course > Course Information

Filter Field	Mapping and Definition
<b>courseID</b>	Internal database identifier.
<b>courseMasterID</b>	Internal database identifier.
<b>calendarID</b>	Internal database identifier.
<b>shoolID</b>	Internal database identifier.
<b>districtID</b>	Internal database identifier.
<b>endYear</b>	<i>System Administration &gt; Calendar &gt; Calendar</i> The 4-digit year marking the end of the school year (i.e. 2006 would be the end of the 05-06 school year).
<b>courseNumber</b>	<i>Scheduling &gt; Courses</i> Course number.
<b>courseName</b>	<i>Scheduling &gt; Courses</i> Course name.
<b>stateCode</b>	<i>Scheduling &gt; Courses</i> State code associated with this course.
<b>description</b>	<i>Scheduling &gt; Courses</i> User-entered course description.
<b>descriptionNoHTML</b>	<i>Scheduling &gt; Courses</i> User-entered course description devoid of HTML tags.



<b>departmenID</b>	Internal database identifier.
<b>departmentName</b>	<i>Scheduling &gt; Courses</i> District or school-defined department name for use in organizing curriculum.
<b>type</b>	<i>Scheduling &gt; Courses</i> Course type indicating that course is R: Required, E: Elective, or other.
<b>programType</b>	<i>Scheduling &gt; Courses</i> Stores the type of program the course is related to.
<b>teachingMethod</b>	<i>Scheduling &gt; Courses</i> Stores the teaching method of the course. May not be used in all states.
<b>vocationalCode</b>	<i>Scheduling &gt; Courses</i> Stores the vocational code of the course. Not used in all states.
<b>distanceCode</b>	<i>Scheduling &gt; Courses</i> Instructional setting of course.
<b>specialEdCode</b>	<i>Scheduling &gt; Courses</i> Stores the special education code for the course.
<b>coursePart</b>	<i>Scheduling &gt; Courses</i> Stores the course part for the course.
<b>honorsCode</b>	<i>Scheduling &gt; Courses</i> Difficulty level of course.
<b>activityCode</b>	<i>Scheduling &gt; Courses</i> The district-defined activity code of the course for tracking activity rosters and groups.
<b>homeroom</b>	<i>Scheduling &gt; Courses &gt; Section</i> Indicates whether or not the course is designated as a homeroom for state reporting purposes.
<b>transcript</b>	<i>Scheduling &gt; Courses</i> Indicates whether or not the course should be posted to transcript.
<b>requestable</b>	<i>Scheduling &gt; Courses</i> Indicates whether or not the course is available for request via the portal.
<b>required</b>	<i>Scheduling &gt; Courses</i> Indicates whether or not the course is a required course.
<b>attendance</b>	<i>Scheduling &gt; Courses</i> Indicates attendance should be taken in the course.
<b>unitAttendance</b>	<i>Scheduling &gt; Courses</i> Indicates whether or not the course has unit attendance.

<b>terms</b>	<i>Scheduling &gt; Courses</i> Stores the number of terms the course meets.
<b>schedules</b>	<i>Scheduling &gt; Courses</i> Determines how many days a section will take up in schools with multiple period schedules.
<b>periods</b>	<i>Scheduling &gt; Courses</i> The number of periods a section of the course lasts.
<b>gpaWeight</b>	<i>Scheduling &gt; Courses</i> The weight the course should contribute to a student's cumulative GPA.
<b>bonusPointsAvail</b>	<i>Scheduling &gt; Courses</i> Indicates whether or not bonus points are available.
<b>maxStudents</b>	<i>Scheduling &gt; Courses</i> The maximum number of students who can be enrolled in the course.
<b>priority</b>	<i>Scheduling &gt; Courses</i> The priority of the course as related to others courses in the scheduling process.
<b>sectionsToBuild</b>	<i>Scheduling &gt; Courses</i> The number of sections that need to be built for the course in the schedule.
<b>sections</b>	<i>Scheduling &gt; Courses</i> Count of all sections that exist for active courses in the calendar.
<b>pseoType</b>	<i>Scheduling &gt; Courses</i> Stores the PSEO number in the Community College CTDS field. Not used in all states.
<b>pseoCredit</b>	<i>Scheduling &gt; Courses</i> Stores the number of PSEO credits the course is worth. Not used in all states.
<b>specialCode</b>	<i>Scheduling &gt; Courses &gt; Course</i> Stores the special education code for the course.
<b>highSchoolCredit</b>	<i>Scheduling &gt; Courses &gt; Course</i> Checkbox indicating that course is grants high school credit. Not used in all states.
<b>catalogID</b>	Internal database identifier.
<b>catalogName</b>	<i>Grading and Standards &gt; Course Catalog</i> Course catalog name.
<b>courseMasterNumber</b>	<i>Grading and Standards &gt; Course Master</i> Course number for this course master entry.
<b>courseMasterName</b>	<i>Scheduling &gt; Course Catalog</i> Course name for this course master entry.

<b>courseMasterStateCode</b>	<i>Scheduling &gt; Course Catalog</i> Course state code for this course master entry.
<b>altStateCode</b>	<i>Scheduling &gt; Courses &gt; Course</i> Alternative state code associated with this course. Not available in all states.
<b>abbreviation</b>	Abbreviation of the course name. Appears when searching.
<b>grade</b>	<i>Scheduling &gt; Courses &gt; Course</i> The grade related to the course.
<b>stateCodeName</b>	<i>System Administration &gt; Course Codes &gt; Course Code Editor</i> The State Code name of the course.
<b>stateCodeAbbreviation</b>	<i>System Administration &gt; Course Codes &gt; Course Code Editor</i> The State Code abbreviation of the course.
<b>stateCodeStartYear</b>	<i>System Administration &gt; Course Codes &gt; Course Code Editor</i> The State Code of the start year of the course.
<b>stateCodeEndYear</b>	<i>System Administration &gt; Course Codes &gt; Course Code Editor</i> The State Code of the end year of the course.
<b>NCES Code</b>	<i>Scheduling &gt; Courses &gt; Course &gt; NCES Data</i> A combination of the SCED Subject Area and the SCED Course Identifier codes.   This field was added in the <a href="#">E.1130 Release Pack (July 2011)</a> .
<b>SCED Subject Area</b>	<i>Scheduling &gt; Courses &gt; Course &gt; NCES Data</i> The Secondary School Course Classification System: School Codes for the Exchange of Data (SCED) presents a taxonomy and course descriptions for secondary education.   This field was added in the <a href="#">E.1130 Release Pack (July 2011)</a> .

<b>SCED Course Identifier</b>	<p><i>Scheduling &gt; Courses &gt; Course &gt; NCES Data</i> The five-digit SCED code and name of the course.</p> <p>✔ This field was added in the <a href="#">E.1130 Release Pack (July 2011)</a>.</p>
<b>SCED Lowest Grade</b>	<p><i>Scheduling &gt; Courses &gt; Course &gt; NCES Data</i> Part of the Grade Span of the Course Identifier.</p> <p>✔ This field was added in the <a href="#">E.1130 Release Pack (July 2011)</a>.</p>
<b>SCED Highest Grade</b>	<p><i>Scheduling &gt; Courses &gt; Course &gt; NCES Data</i> Part of the Grade Span of the Course Identifier.</p> <p>✔ This field was added in the <a href="#">E.1130 Release Pack (July 2011)</a>.</p>
<b>SCED Available Credit</b>	<p><i>Scheduling &gt; Courses &gt; Course &gt; NCES Data</i> Measured in Carnegie units, the amount of credit available to a student who successfully meets the objectives of the course.</p> <p>✔ This field was added in the <a href="#">E.1130 Release Pack (July 2011)</a>.</p>
<b>SCED Course Level</b>	<p><i>Scheduling &gt; Courses &gt; Course &gt; NCES Data</i> The secondary course's level of rigor.</p> <p>✔ This field was added in the <a href="#">E.1130 Release Pack (July 2011)</a>.</p>



<b>SCED Sequence Number</b>	<p><i>Scheduling &gt; Courses &gt; Course &gt; NCES Data</i></p> <p>The Sequence field describes the manner in which school systems may break up complex content.</p> <p> This field was added in the <a href="#">E.1130 Release Pack (July 2011)</a>.</p>
<b>SCED Maximum Sequence Number</b>	<p><i>Scheduling &gt; Courses &gt; Course &gt; NCES Data</i></p> <p>Highest sequence assigned to the course.</p> <p> This field was added in the <a href="#">E.1130 Release Pack (July 2011)</a>.</p>
<i>Request Summary</i>	<i>Course &gt; Course Information &gt; Request Summary</i>
<b>calendarID</b>	Internal database identifier.
<b>courseID</b>	Internal database identifier.
<b>requiredRequests</b>	<p><i>Scheduling &gt; Courses &gt; Section &gt; Roster</i></p> <p>Count of requests for this course flagged as Required.</p>
<b>electiveRequests</b>	<p><i>Scheduling &gt; Courses &gt; Section &gt; Roster</i></p> <p>Count of requests for this course flagged as Elective.</p>
<b>alternateRequests</b>	<p><i>Scheduling &gt; Courses &gt; Section &gt; Roster</i></p> <p>Count of requests for this course flagged as Alternate.</p>
<b>totalNonAlternateRequests</b>	<p><i>Scheduling &gt; Courses &gt; Section &gt; Roster</i></p> <p>Count of requests for this course flagged as Required or Elective.</p>
<b>maleRequests</b>	<p><i>Scheduling &gt; Courses &gt; Section &gt; Roster</i></p> <p>Count of non-alternate requests for this course made by male students.</p>
<b>femaleRequests</b>	<p><i>Scheduling &gt; Courses &gt; Section &gt; Roster</i></p> <p>Count of non-alternate requests for this course made by female students.</p>
<b>specialEdRequests</b>	<p><i>Scheduling &gt; Courses &gt; Section &gt; Roster</i></p> <p>Count of non-alternate requests for this course made by special education students with a current IEP.</p>
<b>grade06Requests</b>	<p><i>Scheduling &gt; Courses &gt; Section &gt; Roster</i></p> <p>Count of non-alternate requests for this course made by sixth-grade students.</p>
<b>grade07Requests</b>	<p><i>Scheduling &gt; Courses &gt; Section &gt; Roster</i></p> <p>Count of non-alternate requests for this course made by seventh-grade students.</p>

<b>grade08Requests</b>	<i>Scheduling &gt; Courses &gt; Section &gt; Roster</i> Count of non-alternate requests for this course made by eighth-grade students.
<b>grade09Requests</b>	<i>Scheduling &gt; Courses &gt; Section &gt; Roster</i> Count of non-alternate requests for this course made by ninth-grade students.
<b>grade10Requests</b>	<i>Scheduling &gt; Courses &gt; Section &gt; Roster</i> Count of non-alternate requests for this course made by tenth-grade students.
<b>grade11Requests</b>	<i>Scheduling &gt; Courses &gt; Section &gt; Roster</i> Count of non-alternate requests for this course made by eleventh-grade students.
<b>grade12Requests</b>	<i>Scheduling &gt; Courses &gt; Section &gt; Roster</i> Count of non-alternate requests for this course made by twelfth-grade students.

## Course &gt; Section Information

Filter Field	Mapping and Definition
<b>sectionID</b>	Internal database identifier.
<b>trialID</b>	Internal database identifier.
<b>calendarID</b>	Internal database identifier.
<b>sectionNumber</b>	<i>Scheduling &gt; Courses &gt; Section</i> Section number for instance of course.
<b>courseID</b>	Internal database identifier.
<b>teacherDisplay</b> <b>teacher2Display</b> <b>teacher3Display</b> <b>teacher4Display</b>	<i>Scheduling &gt; Courses &gt; Section</i> Stores the teacher name displayed on student schedules, default to full name, may be changed in section editor.
<b>sectionStaff1Display</b> <b>sectionStaff2Display</b> <b>sectionStaff3Display</b>	<i>Scheduling &gt; Courses &gt; Section</i> Displays additional staff members who can view roster information for the course section (special education teachers, etc.).
<b>maxStudents</b>	<i>Scheduling &gt; Courses &gt; Section</i> The maximum number of students who can be enrolled in the section.
<b>classType</b>	<i>Scheduling &gt; Courses &gt; Section</i> Stores the type of class for the section. Not used in all states.
<b>schedGroupID</b>	Internal database identifier.
<b>groupName</b>	<i>Scheduling &gt; Courses &gt; Section</i> Name of scheduling group or team assigned to the section (if applicable).
<b>roomID</b>	Internal database identifier.
<b>roomName</b>	<i>Scheduling &gt; Courses &gt; Section</i> Name associated with room as defined in System Administration > Resources > Resources > Rooms.
<b>roomPhone</b>	<i>Scheduling &gt; Courses &gt; Section</i> Phone number to room as defined in System Administration > Resources > Resources > Rooms.
<b>roomCapacity</b>	<i>System Administration &gt; Resources &gt; Resources &gt; Rooms</i> Number of people room can hold.
<b>lunchID</b>	Internal database identifier.

<b>lunchName</b>	<i>Scheduling &gt; Courses &gt; Section</i> The name of the lunch scheduled with the section, if lunches are set up for scheduling (Scheduling > Lunches).
<b>lunchCount</b>	<i>Scheduling &gt; Courses &gt; Section</i> If flagged, checkbox indicates the lunch count field should be added to the attendance tool for this course section.
<b>milkCount</b>	<i>Scheduling &gt; Courses &gt; Section</i> If flagged, checkbox indicates the milk count field should be added to the attendance tool for this course section.
<b>homeroomSection</b>	<i>Scheduling &gt; Courses &gt; Section</i> Indicates the section is the Homeroom for the student.
<b>serviceDistrict</b>	<i>Scheduling &gt; Courses &gt; Section</i> Notes the name of the district where students receive special services.
<b>serviceSchool</b>	<i>Scheduling &gt; Courses &gt; Section</i> Notes the name of the school building where students receive special services.
<b>multipleTeacherCode</b>	<i>Scheduling &gt; Courses &gt; Section</i> Code indicating reason Multiple Teacher(s) are assigned to section. Not used in all states.
<b>lockBuild</b>	Indicates that the scheduling build may not be changed.
<b>lockRoster</b>	Indicates that the roster may not be edited. Rosters are locked within the Schedule Wizard.
<b>giftedDelivery</b>	<i>Scheduling &gt; Courses &gt; Section</i> If flagged, checkbox indicates course is targeted at students receiving gifted services. Not used in all states.
<b>giftedContentArea</b>	<i>Scheduling &gt; Courses &gt; Section</i> Identifies the state-defined gifted delivery area for this course. Not used in all states.
<b>paraprof</b>	<i>Scheduling &gt; Courses &gt; Section</i> Number of paraprofessionals attached to this section. Not used in all states.
<b>skinnySeq</b>	<i>Scheduling &gt; Courses &gt; Section</i> Determines which course prints first on a student schedule when two or more occur courses are taken within the same period. The course with the lowest number will print first on student's schedule.
<b>staffStateID</b>	<i>Census &gt; People &gt; Demographics</i> Staff ID used by the state.
<b>staffNumber</b>	<i>Census &gt; People &gt; Demographics</i> Local Staff Number used by the state or district.

<b>teacherStaffStateID</b> <b>teacher2StaffStateID</b> <b>teacher3StaffStateID</b> <b>teacher4StaffStateID</b>	Internal database identifier.
<b>teacherStaffNumber</b> <b>teacher2StaffNumber</b> <b>teacher3StaffNumber</b> <b>teacher4StaffNumber</b>	<i>Scheduling &gt; Courses &gt; Section</i> The staff number of the primary teacher assigned to section.
<b>teacherPersonID</b> <b>teacher2PersonID</b> <b>teacher3PersonID</b> <b>teacher4PersonID</b>	Internal database identifier.
<b>teacherLastName</b> <b>teacher2LastName</b> <b>teacher3LastName</b> <b>teacher4LastName</b>	<i>Scheduling &gt; Courses &gt; Section</i> Last name of the primary teacher assigned to section.
<b>teacherFirstName</b> <b>teacher2FirstName</b> <b>teacher3FirstName</b> <b>teacher4FirstName</b>	<i>Scheduling &gt; Courses &gt; Section</i> First name of the primary teacher assigned to section.
<b>sectionStaff1StateID</b> <b>sectionStaff2StateID</b> <b>sectionStaff3StateID</b> <b>sectionStaff4StateID</b>	<i>Scheduling &gt; Courses &gt; Section</i> The Staff State ID number of the section staff assigned to section.
<b>sectionStaff1Number</b> <b>sectionStaff2Number</b> <b>sectionStaff3Number</b>	<i>Scheduling &gt; Courses &gt; Section</i> The staff number of the section staff assigned to section.
<b>sectionStaff1PersonID</b> <b>sectionStaff2PersonID</b> <b>sectionStaff3PersonID</b>	Internal database identifier.
<b>sectionStaff1LastName</b>  <b>sectionStaff2LastName</b>  <b>sectionStaff3LastName</b>	<i>Scheduling &gt; Courses &gt; Section</i> Last name of the section staff member assigned to section.
<b>sectionStaff1FirstName</b>  <b>sectionStaff2FirstName</b>  <b>sectionStaff3FirstName</b>	<i>Scheduling &gt; Courses &gt; Section</i> First name of the section staff member assigned to section.

<b>nonHqtReason</b>	<i>Scheduling &gt; Courses &gt; Section</i> Reason that the section is not taught by a Highly Qualified Teacher. Not available in all states.
<b>nonHqtExplanation</b>	<i>Scheduling &gt; Courses &gt; Section</i> Explanation of why the section is not taught by a Highly Qualified Teacher. Not available in all states.
<b>highlyQualified</b>	<i>Scheduling &gt; Courses &gt; Sections</i> Indicates if teacher of section is considered highly qualified.
<b>Roster Summary</b>	<b><i>Course &gt; Section Information &gt; Roster Summary</i></b>
<b>sectionID</b>	Internal database identifier.
<b>trialID</b>	Internal database identifier.
<b>calendarID</b>	Internal database identifier.
<b>studentCount</b>	<i>Scheduling &gt; Courses &gt; Section &gt; Roster</i> Count of requests for this course flagged as Required or Elective.
<b>maleStudentCount</b>	<i>Scheduling &gt; Courses &gt; Section &gt; Roster</i> Count of non-alternate requests for this course made by male students.
<b>femaleStudentCourt</b>	<i>Scheduling &gt; Courses &gt; Section &gt; Roster</i> Count of non-alternate requests for this course made by female students.
<b>specialEdStudents</b>	<i>Scheduling &gt; Courses &gt; Section &gt; Roster</i> Count of non-alternate requests for this course made by special ed students with a current IEP.
<b>gradeKGStudents</b>	<i>Scheduling &gt; Courses &gt; Section &gt; Roster</i> Count of non-alternate requests for this course made by kindergarten students.
<b>grade01Students</b>	<i>Scheduling &gt; Courses &gt; Section &gt; Roster</i> Count of non-alternate requests for this course made by first-grade students.
<b>grade02Students</b>	<i>Scheduling &gt; Courses &gt; Section &gt; Roster</i> Count of non-alternate requests for this course made by second-grade students.
<b>grade03Students</b>	<i>Scheduling &gt; Courses &gt; Section &gt; Roster</i> Count of non-alternate requests for this course made by third-grade students.
<b>grade04Students</b>	<i>Scheduling &gt; Courses &gt; Section &gt; Roster</i> Count of non-alternate requests for this course made by fourth-grade students.
<b>grade05Students</b>	<i>Scheduling &gt; Courses &gt; Section &gt; Roster</i> Count of non-alternate requests for this course made by fifth-grade students.
<b>grade06Students</b>	<i>Scheduling &gt; Courses &gt; Section &gt; Roster</i> Count of non-alternate requests for this course made by sixth-grade students.

<b>grade07Students</b>	<i>Scheduling &gt; Courses &gt; Section &gt; Roster</i> Count of non-alternate requests for this course made by seventh-grade students.
<b>grade08Students</b>	<i>Scheduling &gt; Courses &gt; Section &gt; Roster</i> Count of non-alternate requests for this course made by eighth-grade students.
<b>grade09Students</b>	<i>Scheduling &gt; Courses &gt; Section &gt; Roster</i> Count of non-alternate requests for this course made by ninth-grade students.
<b>grade10Students</b>	<i>Scheduling &gt; Courses &gt; Section &gt; Roster</i> Count of non-alternate requests for this course made by tenth-grade students.
<b>grade11Students</b>	<i>Scheduling &gt; Courses &gt; Section &gt; Roster</i> Count of non-alternate requests for this course made by eleventh-grade students.
<b>grade12Students</b>	<i>Scheduling &gt; Courses &gt; Section &gt; Roster</i> Count of non-alternate requests for this course made by twelfth-grade students.
<b>drops</b>	<i>Scheduling &gt; Courses &gt; Section &gt; Roster</i> Count of students who have dropped the section.
<b><i>Section Schedule</i></b>	<b><i>Course &gt; Section Information &gt; Section Schedule</i></b>
<b>calendarID</b>	Internal database identifier.
<b>structureID</b>	Internal database identifier.
<b>trialID</b>	Internal database identifier.
<b>sectionID</b>	Internal database identifier.
<b>termStart</b>	<i>Scheduling &gt; Course &gt; Section</i> Name of term in which section starts.
<b>termEnd</b>	<i>Scheduling &gt; Course &gt; Section</i> Name of term in which section ends.
<b>terms</b>	<i>Scheduling &gt; Course &gt; Section</i> Number of terms the course section takes place.
<b>scheduleStart</b>	<i>Scheduling &gt; Course &gt; Section</i> Name of period schedule in which section starts.
<b>scheduleEnd</b>	<i>Scheduling &gt; Course &gt; Section</i> Name of period schedule in which section ends.
<b>schedules</b>	<i>Scheduling &gt; Course &gt; Section</i> Number of period schedules a section will take up in schools with multiple period schedules.
<b>periodStart</b>	<i>Scheduling &gt; Course &gt; Section</i> Name of the period in which a section starts.

<b>periodEnd</b>	<i>Scheduling &gt; Course &gt; Section</i> Name of the period in which a section ends.
<b>periods</b>	<i>Scheduling &gt; Course &gt; Section</i> Number of periods the course section runs.

## Course > School Calendar

<b>Filter Field</b>	<b>Mapping and Definition</b>
<b>calendarID</b>	Internal database identifier.
<b>districtID</b>	Internal database identifier.
<b>schoolID</b>	Internal database identifier.
<b>endYear</b>	<i>System Administration &gt; Calendar &gt; School Years</i> Refers to the last year of a school year. For example, calendars for 2007-08 have the end year 2008.
<b>name</b>	<i>System Administration &gt; Calendar &gt; Calendar</i> Displays the name of the calendar.
<b>number</b>	<i>System Administration &gt; Calendar &gt; Calendar</i> Displays the number of the calendar for reference purposes.
<b>startDate</b>	<i>System Administration &gt; Calendar &gt; Calendar</i> Lists the Start Date of the calendar. This is NOT the first day of instruction, but could be the first day staff is available.
<b>endDate</b>	<i>System Administration &gt; Calendar &gt; Calendar</i> Lists the End Date of the calendar. This is NOT the last day of instruction, but could be the last day staff are available.
<b>comments</b>	<i>System Administration &gt; Calendar &gt; Calendar</i> Notes any comments associated with the calendar.
<b>exclude</b>	<i>System Administration &gt; Calendar &gt; Calendar</i> When this checkbox is marked, the calendar is not used in state reporting extracts.
<b>summerSchool</b>	<i>System Administration &gt; Calendar &gt; Calendar</i> When this checkbox is marked, the calendar is labeled as a summer school calendar __.
<b>studentDay</b>	<i>System Administration &gt; Calendar &gt; Calendar</i> Lists the total number of minutes students are scheduled into courses.
<b>teacherDay</b>	<i>System Administration &gt; Calendar &gt; Calendar</i> Lists the total number of minutes teachers are available for instruction and prep time.



<b>wholeDayAbsense</b>	<i>System Administration &gt; Calendar &gt; Calendar</i> Lists the total number of minutes that constitutes a full day of absence per a district or state decision. Used in calculating ADM and ADA and in attendance rounded to whole/half days.
<b>halfDayAbsence</b>	<i>System Administration &gt; Calendar &gt; Calendar</i> Lists the total number of minutes that constitutes a half day of absence per a district or state decision. Used in calculating ADM and ADA and in attendance rounded to whole/half days.
<b>calendarGUID</b>	Internal database identifier.
<b>alternativeCode</b>	<i>System Administration &gt; Calendar &gt; Calendar</i> If flagged, checkbox indicates a 4 Day School Week. Not used in all states.
<b>title3</b>	<i>System Administration &gt; Calendar &gt; Calendar</i> Indicates district participates in the Title 3 program. Not used in all states.
<b>title3consortium</b>	<i>System Administration &gt; Calendar &gt; Calendar</i> Indicates the school is part of a team of districts operating together to improve student learning using Title 3 funds. Not used in all states.
<b>title1</b>	<i>System Administration &gt; Resources &gt; School</i> Displays the selection of the Title 1 funding options. Not used in all states.
<b>legacyKey</b>	Used during data conversion.
<b>schoolChoice</b>	<i>System Administration &gt; Calendar &gt; Calendar</i> If flagged, checkbox indicates calendar is labeled as using school choice functionality.
<b>type</b>	<i>System Administration &gt; Calendar &gt; Calendar</i> Calendar type is usually (I)nstructional, but can also be (S)ummer School, (R)esidential, etc.
<b>countDate</b>	<i>System Administration &gt; Calendar &gt; Calendar</i> Testing Count Date. Not used in all states.
<b>assignmentRequired</b>	<i>System Administration &gt; Calendar &gt; Calendar</i> Defines if students enrolling in this calendar are required to follow school boundary assignment logic.
<b><i>Calendar Assignment Overrides</i></b>	<b><i>Course &gt; School Calendar &gt; Calendar &gt; Assignment Overrides</i></b>
<b>calendarOverrideID</b>	Internal database identifier.
<b>calendarID</b>	<i>System Administration &gt; Resources &gt; School</i> Parent calendar identifier.
<b>overrideType</b>	<i>System Administration &gt; Calendar &gt; Calendar &gt; Overrides</i> Displays selection of type of override used in school placement.

## Course &gt; School

Filter Field	Mapping and Definition
<b>schoolID</b>	Internal database identifier.
<b>districtID</b>	Internal database identifier.
<b>ncesSchoolID</b>	<i>System Administration &gt; Resources &gt; School</i> NCES school number.
<b>number</b>	<i>System Administration &gt; Resources &gt; School</i> School location number.
<b>name</b>	<i>System Administration &gt; Resources &gt; School</i> Official name of School.
<b>type</b>	<i>System Administration &gt; Resources &gt; School</i> Designated type of school (e.g. Elementary, Middle, High, etc.).
<b>comments</b>	<i>System Administration &gt; Resources &gt; School</i> User-entered notes about the school.
<b>address</b>	<i>System Administration &gt; Resources &gt; School</i> Mailing address of school building.
<b>city</b>	<i>System Administration &gt; Resources &gt; School</i> Mailing city of school building.
<b>state</b>	<i>System Administration &gt; Resources &gt; School</i> State of school building.
<b>zip</b>	<i>System Administration &gt; Resources &gt; School</i> Zip code of school building.
<b>phone</b>	<i>System Administration &gt; Resources &gt; School</i> Phone number of school building.
<b>fax</b>	<i>System Administration &gt; Resources &gt; School</i> Fax number of school building.
<b>email</b>	<i>System Administration &gt; Resources &gt; School</i> Email of school building.
<b>url</b>	<i>System Administration &gt; Resources &gt; School</i> Web site address of school.
<b>dualEnrollment</b>	<i>System Administration &gt; Resources &gt; School</i> Checked if school allows students to be enrolled in two buildings at one time.
<b>title1</b>	<i>System Administration &gt; Resources &gt; School</i> Selected if school provides Title 1 services.

<b>principalName</b>	<i>System Administration &gt; Resources &gt; School</i> Name of principal.
<b>principalTitle</b>	<i>System Administration &gt; Resources &gt; School</i> Name of principal's title.
<b>principalEmail</b>	<i>System Administration &gt; Resources &gt; School</i> Email of principal.
<b>schoolGUID</b>	Internal database identifier.
<b>catalogID</b>	Internal database identifier.
<b>satNumber</b>	<i>System Administration &gt; Resources &gt; School</i> School number for SAT purposes; varies by state (e.g. CEEB, CBBC).
<b>standardCode</b>	<i>System Administration &gt; Resources &gt; School</i> Code related to SIF/DIS information.
<b>agency</b>	<i>System Administration &gt; Resources &gt; School</i> Agency (Education Line Office) associated with school. Not used in all states.
<b>restructureStartDate</b>	<i>System Administration &gt; Resources &gt; School &gt; School</i> For BIE schools, the date on which restructuring to meet NCLB standards began.
<b>restructureEndDate</b>	<i>System Administration &gt; Resources &gt; School &gt; School</i> For BIE schools, the date on which restructuring to meet NCLB standards ended.
<b>groupNumber</b>	District number assigned by and only used in the federal installation to allow tracking of both the state-assigned district number and the federal assigned number.
<b>aypGrouping</b>	<i>System Administration &gt; Resources &gt; School</i> AYP Grouping of school (e.g. K-8, 9-12, exclude). Not used in all states.
<b>reportingSchoolID</b>	Internal database identifier.
<b>physicalAddress</b>	<i>System Administration &gt; Resources &gt; School</i> Physical address of school building.
<b>physicalCity</b>	<i>System Administration &gt; Resources &gt; School</i> Physical city of school building.
<b>physicalState</b>	<i>System Administration &gt; Resources &gt; School</i> Physical state of school building.
<b>physicalZip</b>	<i>System Administration &gt; Resources &gt; School</i> Physical zip code of school building.
<b>county</b>	<i>System Administration &gt; Resources &gt; School</i> County of school. Not used in all states.

<b>status</b>	<i>System Administration &gt; Resources &gt; School</i> Operational Status of school. Not used in all states.
<b>accreditation</b>	<i>System Administration &gt; Resources &gt; School</i> Accreditation Status of school. Not used in all states.
<b>gradeType</b>	<i>System Administration &gt; Resources &gt; School</i> Grade Type associated with school. Not used in all states.
<b>sector</b>	<i>System Administration &gt; Resources &gt; School</i> Sector of education school is related to (e.g. public, non-public). Not used in all states.
<b>locale</b>	<i>System Administration &gt; Resources &gt; School</i> Locale Code indicating school size and location. Not used in all states.
<b>locale2</b>	<i>System Administration &gt; Resources &gt; School</i> Locale Old Code indicating school size and location. Not used in all states.
<b>blueRibbon</b>	<i>System Administration &gt; Resources &gt; School</i> If flagged, checkbox indicates school is considered a Blue Ribbon School. Not used in all states.
<b>title1distinguished</b>	<i>System Administration &gt; Resources &gt; School</i> If flagged, checkbox indicates school is considered a Title 1 Distinguished School. Not used in all states.
<b>entityID</b>	<i>System Administration &gt; Resources &gt; School</i> Reporting entity for the school. Not used in all states.
<b>aypStatus</b>	<i>System Administration &gt; Resources &gt; School</i> Indicator of school's AYP School Status. Not used in all states.
<b>size</b>	<i>System Administration &gt; Resources &gt; School</i> The school's MHSA Designation. Not used in all states.
<b>sessionType</b>	<i>Not applicable to interface</i> SIF element.
<b>fRYSCServiceCenterCode</b>	<i>System Administration &gt; Resources &gt; School</i> FRYSC Service Center serving this school.
<b>modifiedByID</b>	<i>Does not appear.</i> Lists the person who modified the information.
<b>modifiedDate</b>	<i>Does not appear.</i> Date of last change.

## Course > District

Filter Field	Mapping and Definition
--------------	------------------------

<b>districtID</b>	Internal database identifier.
<b>ncesDistrictID</b>	<i>System Administration &gt; Resources &gt; District Information</i> NCES district identifier.
<b>number</b>	<i>System Administration &gt; Resources &gt; District Information</i> State-assigned district number.
<b>name</b>	<i>System Administration &gt; Resources &gt; District Information</i> State-recognized district name.
<b>type</b>	<i>System Administration &gt; Resources &gt; District Information</i> State-defined district type used by some states for state reporting.
<b>state</b>	<i>System Administration &gt; Resources &gt; District Information</i> State in which the district exists.
<b>comments</b>	<i>System Administration &gt; Resources &gt; District Information</i> User-entered additional information.
<b>address</b>	<i>System Administration &gt; Resources &gt; District Information</i> Mailing address of the district office.
<b>city</b>	<i>System Administration &gt; Resources &gt; District Information</i> Mailing city of the district office.
<b>zip</b>	<i>System Administration &gt; Resources &gt; District Information</i> Mailing zip code (zip+4 available) of the district office.
<b>county</b>	<i>System Administration &gt; Resources &gt; District Information</i> Mailing county of the district office.
<b>phone</b>	<i>System Administration &gt; Resources &gt; District Information</i> General information phone number for the district office.
<b>fax</b>	<i>System Administration &gt; Resources &gt; District Information</i> General fax number for the district office.
<b>email</b>	<i>System Administration &gt; Resources &gt; District Information</i> General information email for the district office.
<b>districtGUID</b>	Internal database identifier.
<b>stateLinked</b>	System indicator to determine whether district is linked with a state or regional installation of Campus.
<b>url</b>	<i>System Administration &gt; Resources &gt; District Information</i> General URL for the district.
<b>contactLastName</b>	<i>System Administration &gt; Resources &gt; District Information</i> Primary contact last name for the district.

<b>contactFirstName</b>	<i>System Administration &gt; Resources &gt; District Information</i> Primary contact first name for the district.
<b>inactive</b>	System indicator to determine if the district is currently active.
<b>spedFax</b>	<i>System Administration &gt; Resources &gt; District Information</i> District Special Ed office fax number.
<b>spedPhone</b>	<i>System Administration &gt; Resources &gt; District Information</i> District Special Ed office phone number.
<b>spedContactFirstName</b>	<i>System Administration &gt; Resources &gt; District Information</i> District Special Ed contact first name.
<b>spedContactLastName</b>	<i>System Administration &gt; Resources &gt; District Information</i> District Special Ed contact last name.
<b>regionNumber</b>	<i>System Administration &gt; Resources &gt; District Information</i> The state-defined region that logically or physically groups districts together for reporting purposes.
<b>legacyKey</b>	Used during data conversion.
<b>spedAddress</b>	<i>System Administration &gt; Resources &gt; District Information</i> District Special Ed mailing address.
<b>spedCity</b>	<i>System Administration &gt; Resources &gt; District Information</i> District Special Ed mailing city.
<b>spedState</b>	<i>System Administration &gt; Resources &gt; District Information</i> District Special Ed mailing state.
<b>spedZip</b>	<i>System Administration &gt; Resources &gt; District Information</i> District Special Ed mailing zip code (zip+4 available).
<b>spedCounty</b>	<i>System Administration &gt; Resources &gt; District Information</i> District Special Ed mailing county.
<b>groupNumber</b>	District number assigned by and only used in the federal installation to allow tracking of both the state-assigned district number and the federal assigned number.
<b>federalTaxID</b>	<i>Internal database identifier.</i>
<b>nationalProviderID</b>	<i>System Administration &gt; Resources &gt; District Information</i> National provider ID.
<b>mchpProviderID</b>	<i>System Administration &gt; Resources &gt; District Information</i> MCHP provider ID.
<b>districtCode</b>	<i>System Administration &gt; Resources &gt; District Information</i> District Code indicating district type (e.g. Public Schools, Correctional Facilities, Alternative). Not used in all states.

<b>physicalAddress</b>	<i>System Administration &gt; Resources &gt; District Information</i> Physical address of district.
<b>physicalCity</b>	<i>System Administration &gt; Resources &gt; District Information</i> Physical city of district.
<b>physicalState</b>	<i>System Administration &gt; Resources &gt; District Information</i> Physical state of district.
<b>physicalZip</b>	<i>System Administration &gt; Resources &gt; District Information</i> Physical zip code of district.
<b>status</b>	<i>System Administration &gt; Resources &gt; School</i> Operational Status of school. Not used in all states.
<b>ISDNumber</b>	<i>System Administration &gt; Resources &gt; District Information</i> Independent school district number.